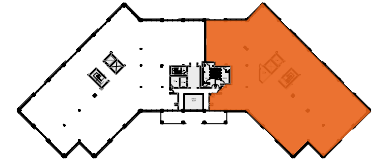


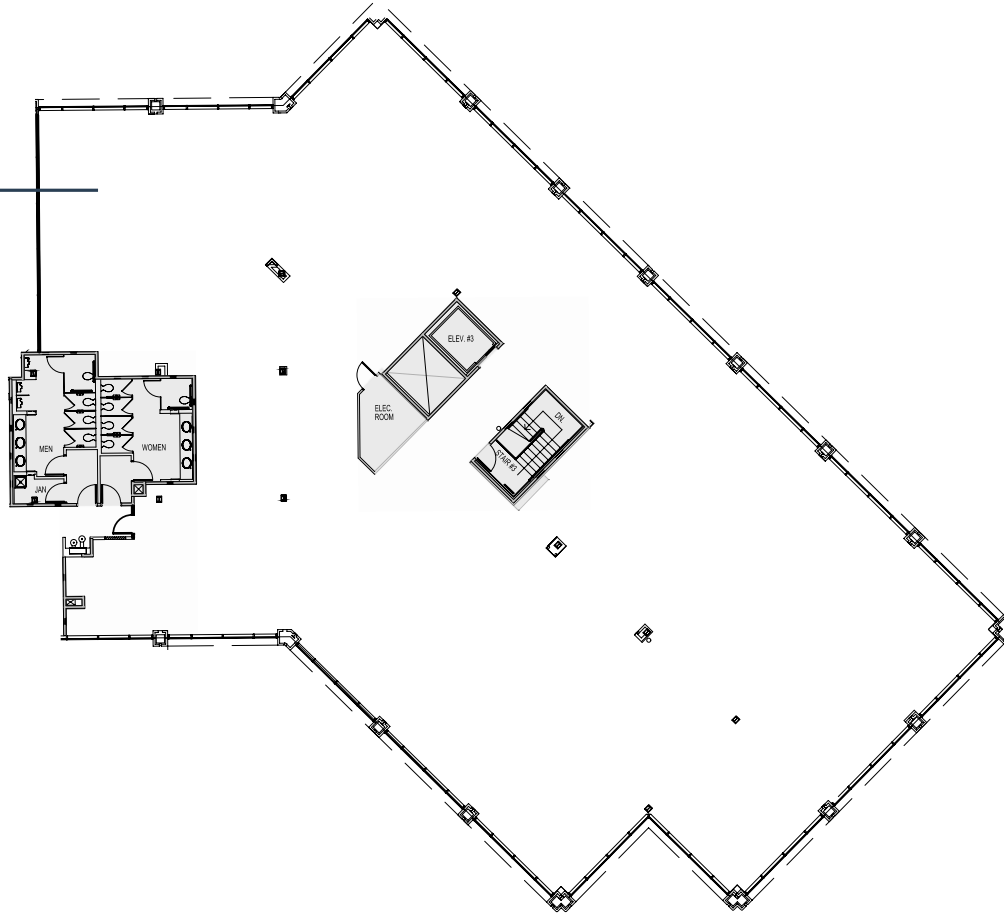
SUITE 250

2000 PERIMETER PARK DRIVE | MORRISVILLE, NC 27560

2000 PERIMETER



SUITE 250
12,995 RSF



newly whiteboxed suite



LEASING CONTACTS

William Allen

Managing Partner

919.415.4390 | wallen@trinity-partners.com

Alex Dunn

Director, Office Leasing

919.415.4405 | adunn@trinity-partners.com