

MT. RUSHMORE BUILDING

333 NE Russell Street & 2601-2605 NE MLK Blvd

FOR LEASE



This historic mixed-use building offers you all of the best parts of a bustling, energetic neighborhood. Perched on a busy street corner with plenty of foot traffic, the building's street level restaurants, retail spaces, and upstairs office suites provide unparalleled visibility with a charming exterior. Tenants of the Mt. Rushmore Building enjoy an ample parking lot with ADA, tenant, and guest parking, secure building access, and optional basement storage. This property is locally owned and professionally managed, so tenants' needs will be addressed efficiently and promptly.

Matt Schweitzer
matt@northrimpx.com | [503.525.1927](tel:503.525.1927)



northrimpx.com

819 SE Morrison Street, Ste 110, Portland OR 97214 | [503.525.1925](tel:503.525.1925)

Matthew Schweitzer | matt@northrimpx.com

FOR LEASE

MT. RUSHMORE BUILDING

333 NE Russell Street & 2601-2605 NE MLK Blvd

Walk Score



92

"Walker's Paradise"

Transit Score



67

"Good Transit"

Bike Score



99

"Biker's Paradise"

Property Details

- Street level restaurant and retail suites
- 2nd floor office suites
- Furnished 2nd floor lobby
- Onsite-patrolled parking lot for tenants and guests
- Optional basement storage available

Location

- Portland's Eliot neighborhood
- Rated as a "Walker's Paradise," so there is frequent foot traffic
- 9 Minute walk from B Portland Streetcar - B Loop at the NE Broadway, and 2nd stop
- Easy access to I-5 and I-84

Demographics (within 1 mile)

- Population: 25,215
- Projected Population: (2029) 26,826
- Median Household Income: \$133,653
- Median Age: 38.13

Matt Schweitzer

matt@northrimpx.com | [503.525.1927](tel:503.525.1927)



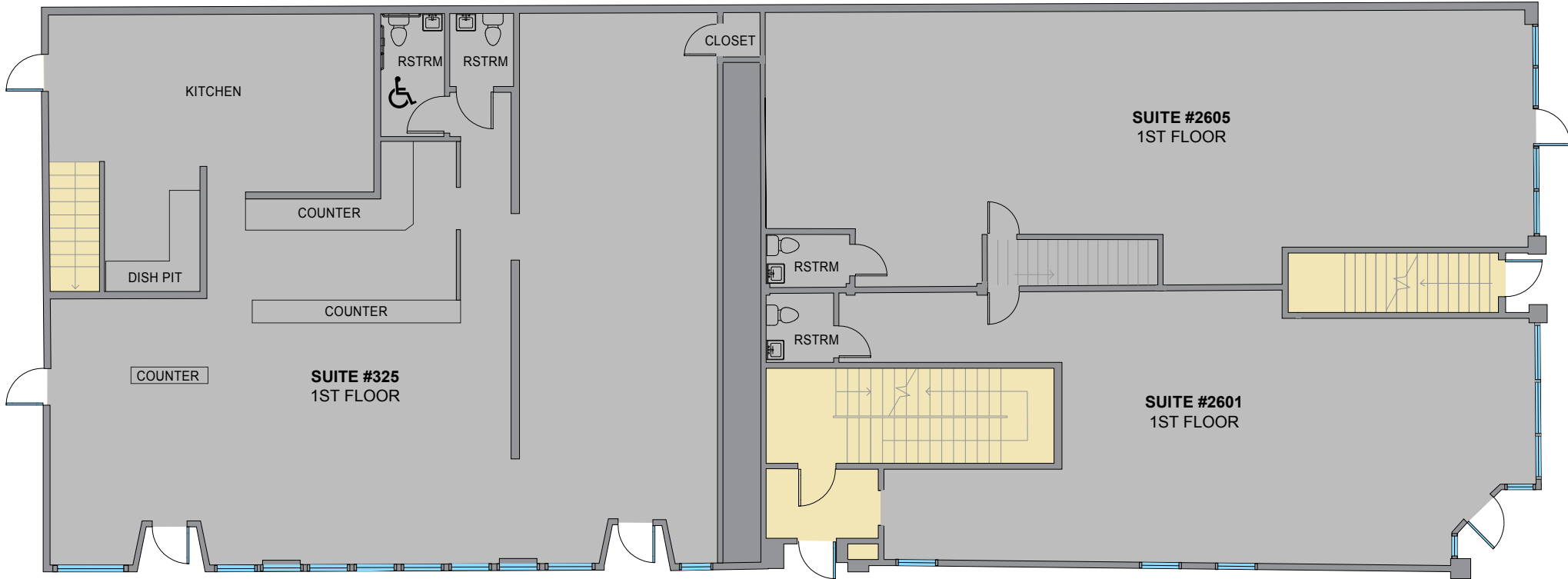
northrimpx.com

819 SE Morrison Street, Ste 110, Portland OR 97214 | [503.525.1925](tel:503.525.1925)

Matthew Schweitzer | matt@northrimpx.com

FLOOR PLAN

1st Floor



MT. RUSHMORE BUILDING 333 NE Russell Street & 2601-2605 NE MLK Blvd

FOR LEASE

Matt Schweitzer

matt@northrimpx.com | [503.525.1927](tel:503.525.1927)



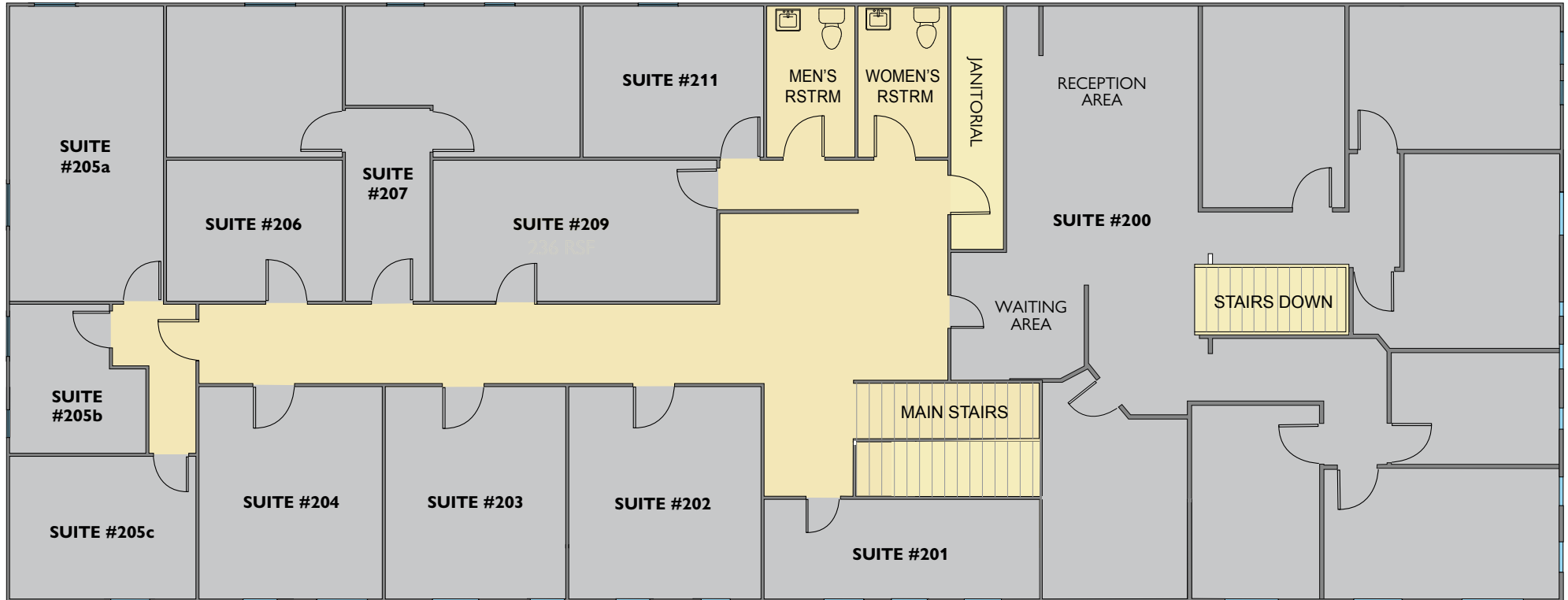
northrimpx.com

819 SE Morrison Street, Ste 110, Portland OR 97214 | [503.525.1925](tel:503.525.1925)

Matthew Schweitzer | matt@northrimpx.com

FLOOR PLAN

2nd Floor



MT. RUSHMORE BUILDING 333 NE Russell Street & 2601-2605 NE MLK Blvd

FOR LEASE

Matt Schweitzer
matt@northrimpdx.com | [503.525.1927](tel:503.525.1927)



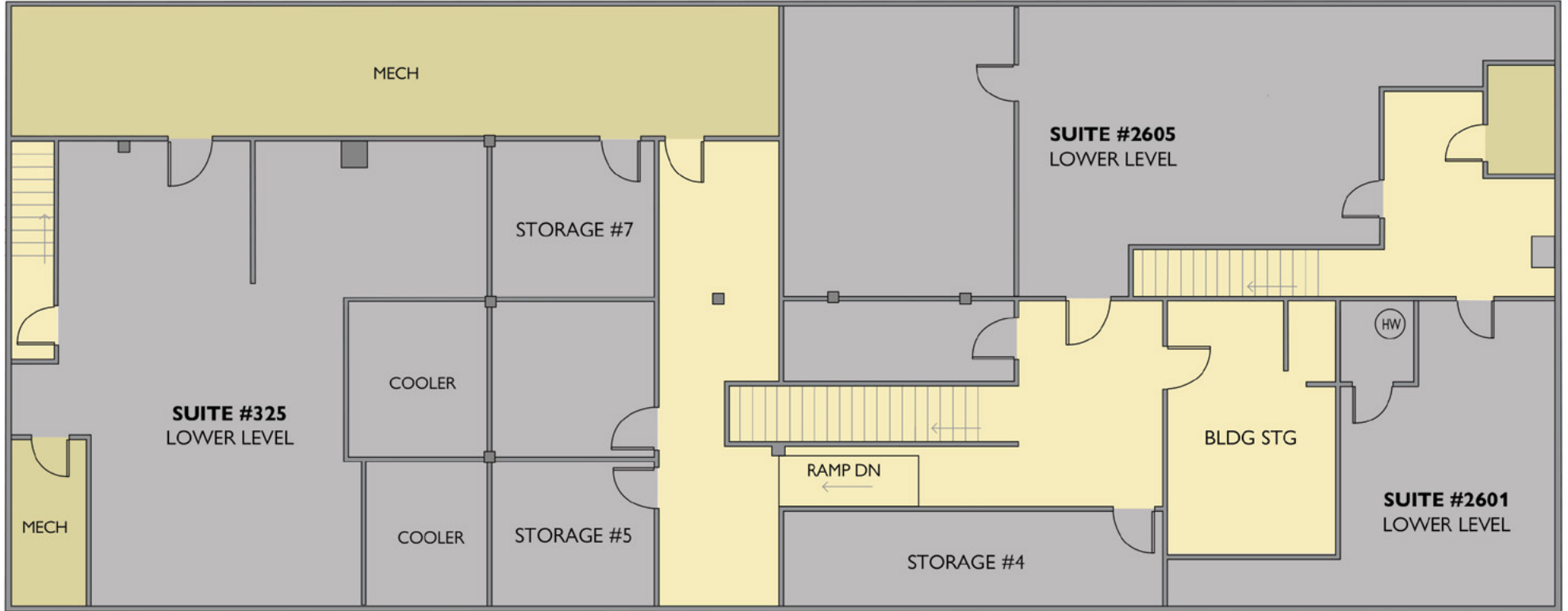
northrimpdx.com

819 SE Morrison Street, Ste 110, Portland OR 97214 | [503.525.1925](tel:503.525.1925)

Matthew Schweitzer | matt@northrimpdx.com

FLOOR PLAN

Basement



MT. RUSHMORE BUILDING 333 NE Russell Street & 2601-2605 NE MLK Blvd

FOR LEASE

Matt Schweitzer
matt@northrimpx.com | [503.525.1927](tel:503.525.1927)



northrimpx.com

819 SE Morrison Street, Ste 110, Portland OR 97214 | [503.525.1925](tel:503.525.1925)

Matthew Schweitzer | matt@northrimpx.com



MT. RUSHMORE BUILDING 333 NE Russell Street & 2601-2605 NE MLK Blvd

FOR LEASE

Matt Schweitzer
matt@northrimpx.com | [503.525.1927](tel:503.525.1927)



northrimpx.com
 819 SE Morrison Street, Ste 110, Portland OR 97214 | [503.525.1925](tel:503.525.1925)
 Matthew Schweitzer | matt@northrimpx.com