

FOR LEASE
Office

6154 N. Meeker Place #100
BOISE, ID 83713

STARK
ACCELERATORS
COMMERCIAL REAL ESTATE

3,500± SF—10,325± SF OFFICE IN BOISE RESEARCH CENTER



PROPERTY HIGHLIGHTS

- Located in the Boise Research Center—Chinden Blvd., S on Explorer Drive, N on N. Meeker Place
- NNN expenses are \$6.50/SF
- Close to all services, as well as Hewlett Packard campus, the West YMCA, and walking paths
- TI's Negotiable
- Contact Agent for showing instructions

PROPERTY DESCRIPTION

- Updated, professional office space located in the Boise Research Center with convenient access to Boise, Eagle, Garden City, and Meridian
- Large Office layout is 6,617± SF with ample power
- Ample Parking & Monument Signage
- Fiber Optics into building

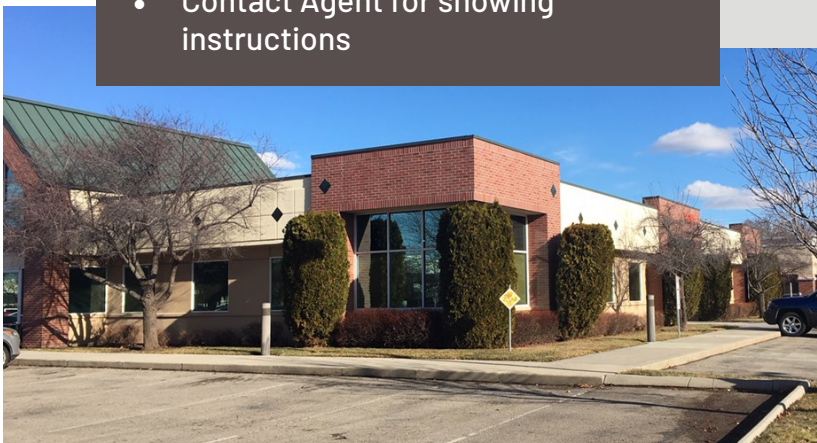
OFFERING SUMMARY

| | |
|---------------------|----------------------|
| SF AVAILABLE | PRICE/SF/YEAR |
| 3,500± SF to 10,325 | \$12.50 |

| | |
|--------------------|----------------------|
| LEASE TERMS | BUILDING SIZE |
| NNN | 23,005± SF |

SHOWINGS

Call Agent for Showing



| <u>DEMOGRAPHICS</u> | <u>1 Mile</u> | <u>3 Mile</u> | <u>5 Mile</u> |
|---------------------|---------------|---------------|---------------|
| POPULATION | 2,557 | 25,329 | 61,580 |
| HOUSEHOLDS | 6,945 | 67,781 | 162,734 |
| AVG HH INCOME | \$78,969 | \$78,888 | \$76,932 |

STEVE YATES

ID LICENSE: AB23900

Cell: **208-830-3173**



Main Office

208-722-2400

DENNIS KELLEY

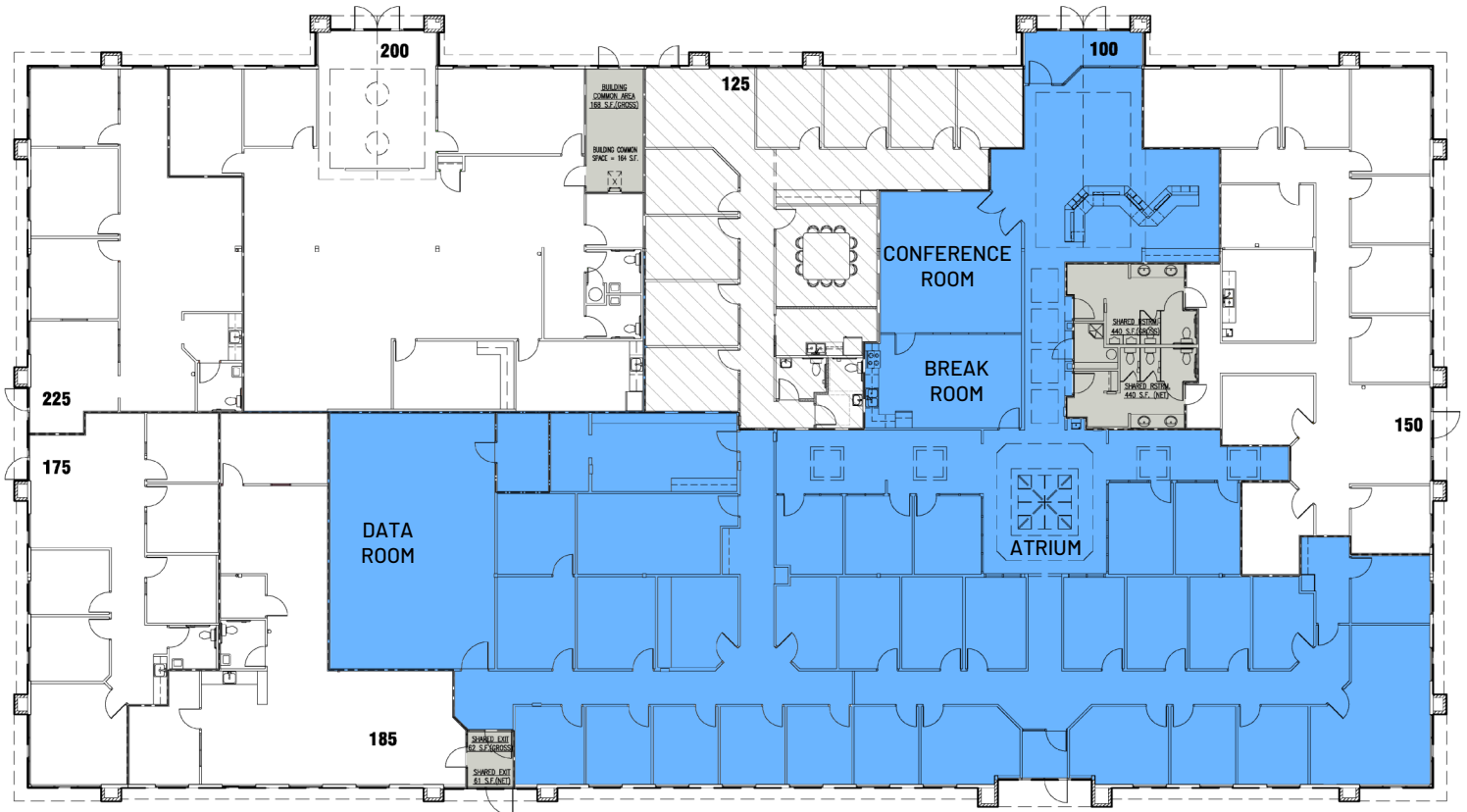
ID LICENSE: AB4297

Cell: **208-890-7700**

FOR LEASE
Office

6154 N. Meeker Place #100
BOISE, ID 83713

**PROFESSIONAL
OFFICE
LEASE IN
BOISE RESEARCH
CENTER**



STEVE YATES

ID LICENSE: AB23900

CELL: 208-830-3173

EMAIL: SYates@stark.realestate

DENNIS KELLEY

ID LICENSE: AB4297

CELL: 208-890-7700

EMAIL: DKelley@stark.realestate

STARK
ACCELERATORS
COMMERCIAL REAL ESTATE

- Office: 208-722-2400
- WWW.STARK.REALESTATE
- 3100 Lake Harbor Drive, Suite 166, Boise, Idaho 83703

Although all information is obtained from sources deemed reliable, we make no guarantee, warranty, expressed or implied, or representation as to the accuracy of content or other conditions, prior sales, leasing, financing, or withdrawals without notice.

FOR LEASE
Office

6154 N. Meeker Place #100
BOISE, ID 83713

**PROFESSIONAL
OFFICE
LEASE IN
BOISE RESEARCH
CENTER**



3,500± SF—10,325± SF OFFICE IN BOISE RESEARCH CENTER



STEVE YATES

ID LICENSE: AB23900

CELL: 208-830-3173

EMAIL: SYates@stark.realestate




DENNIS KELLEY

ID LICENSE: AB4297

CELL: 208-890-7700

EMAIL: DKelley@stark.realestate

STARK
ACCELERATORS
COMMERCIAL REAL ESTATE

-  Office: 208-722-2400
-  WWW.STARK.REALESTATE
-  3100 Lake Harbor Drive, Suite 166, Boise, Idaho 83703

Although all information is obtained from sources deemed reliable, we make no guarantee, warranty, expressed or implied, or representation as to the accuracy of content or other conditions, prior sales, leasing, financing, or withdrawals without notice.