

FOR LEASE

8101 Silver Crossing
Oklahoma City, OK 73132



Johnson

Commercial Group

JohnsonCommercialGroup.com



Offering Summary

Total Size: 93,600 SF +/-
Lease Rate: \$12.00 SF/YR (MG)
CAM Fee: \$0.92 SF/YR
Min Divisible : 1,950 SF +/-
Building Size : 11,700 SF +/-
Lot Size: 5.74 Acres
Zoning: I-1

Property Overview

Located in a thriving area surrounded by established rooftops, business parks, and Wiley Post Airport, this development also benefits from new residential growth and new convenient stores at the Wilshire & Council intersection. Access to anywhere in the OKC metro area is easy and convenient, with a nearby entrance/exit to the Kilpatrick Turnpike at Wilshire. Building 1 has one 1,950/SF unit available. Building 2 has two 1,950/sf units available and one 5,850/SF. Building 3 has six 1,950/SF units available. Building 3 can be customized to fit needs. ****Owner/Broker****

Chris Johnson
chris@jcgok.com
405.435.3572



BRICK & BEAM
REALTY

FOR LEASE

8101 Silver Crossing
Oklahoma City, OK 73132



Johnson

Commercial Group

JohnsonCommercialGroup.com



SILVER CROSS BUSINESS PARK **Light Industrial Development Totaling 93,600 SF.**

Looking for a modern and flexible commercial property in a prime location? This light industrial development of eight buildings, offering a combined area of 93,600 SF. Suites include one 12' x 14' overhead door, two walkthrough doors, one restroom, and a 150 SF office space. The smallest available suite starts at 1,950 SF, with customizable buildouts and amenities to meet your business needs.

Take advantage of the wide range of uses permitted by the zoning, including office, retail, commercial, and light industrial.

Chris Johnson
chris@jcgok.com
405.435.3572



BRICK & BEAM
REALTY

FOR LEASE

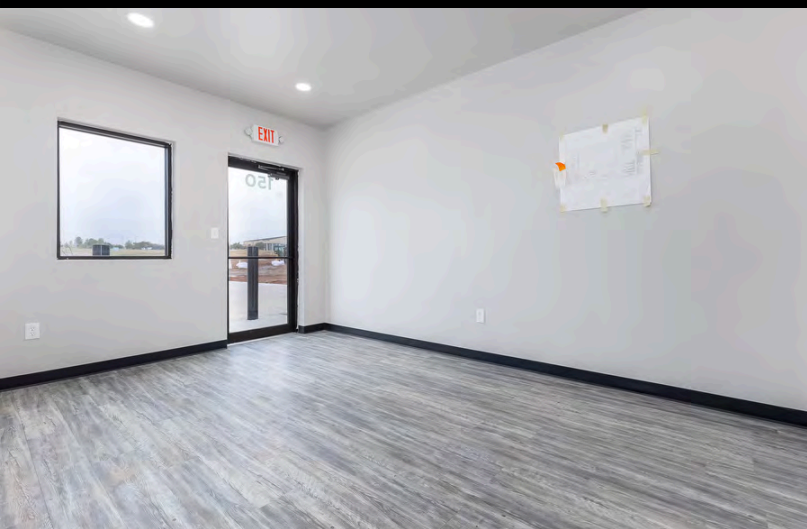
8101 Silver Crossing, Bldg 1
Oklahoma City, OK 73132



Johnson

Commercial Group

JohnsonCommercialGroup.com



Chris Johnson
chris@jcgok.com
405.435.3572



BRICK & BEAM
REALTY

FOR LEASE

8101 Silver Crossing, Bldg 2
Oklahoma City, OK 73132



Johnson
Commercial Group

JohnsonCommercialGroup.com



Chris Johnson
chris@jcgok.com
405.435.3572



BRICK & BEAM
REALTY

FOR LEASE

8101 Silver Crossing
Oklahoma City, OK 73132



Johnson

Commercial Group

JohnsonCommercialGroup.com

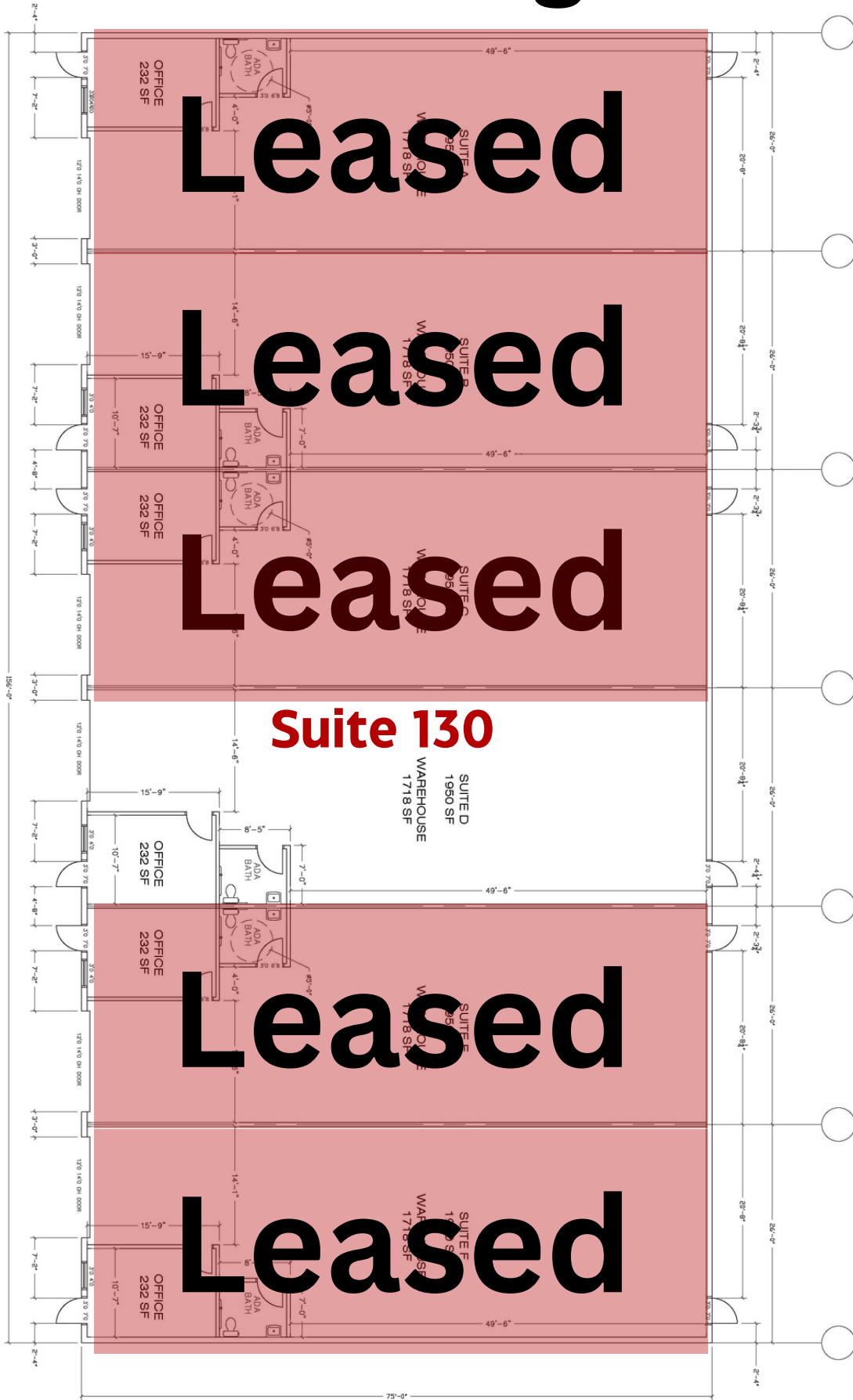


Chris Johnson
chris@jcgok.com
405.435.3572



BRICK & BEAM
REALTY

Building 1



Leased

Leased

Leased

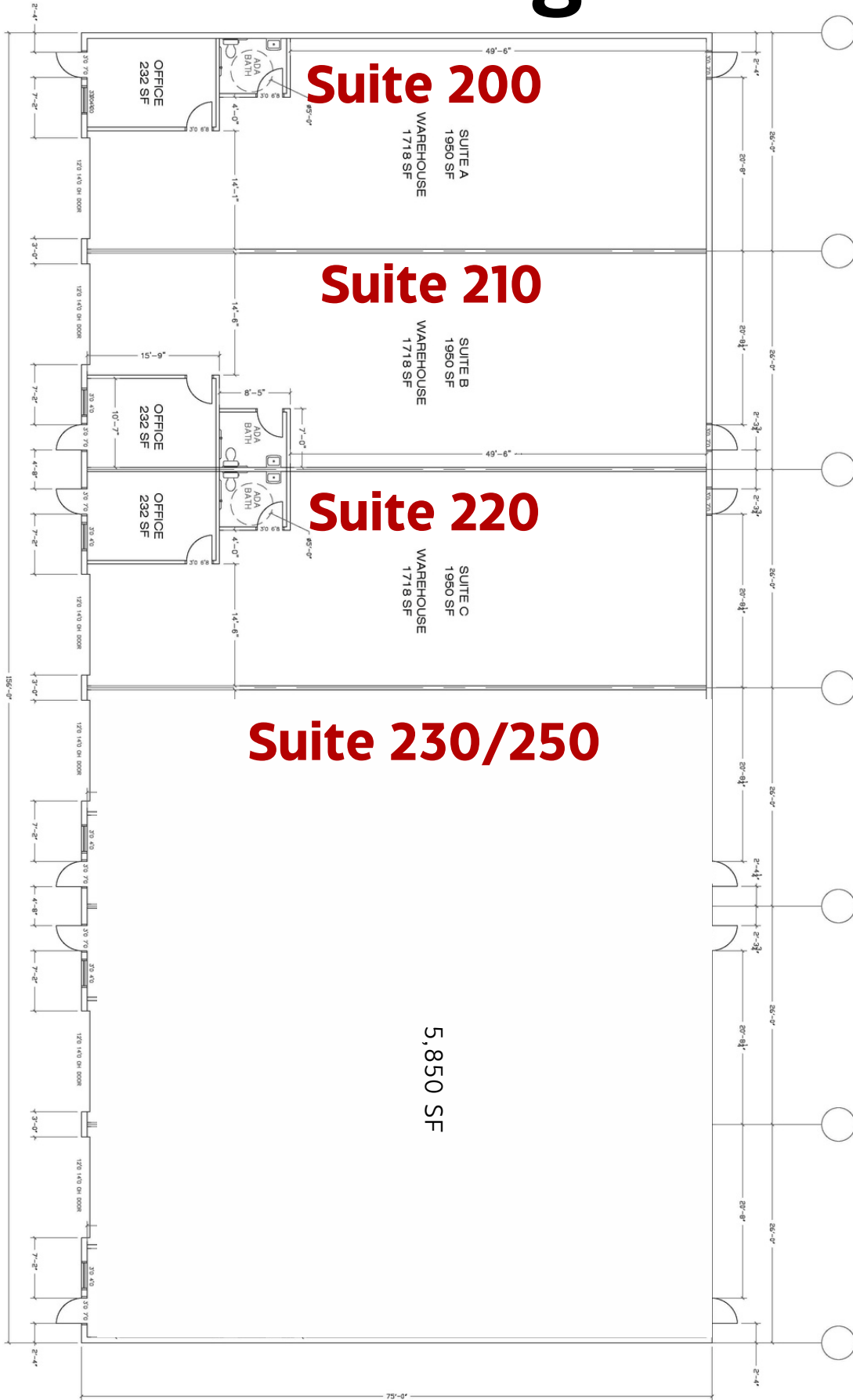
Suite 130

Leased

Leased

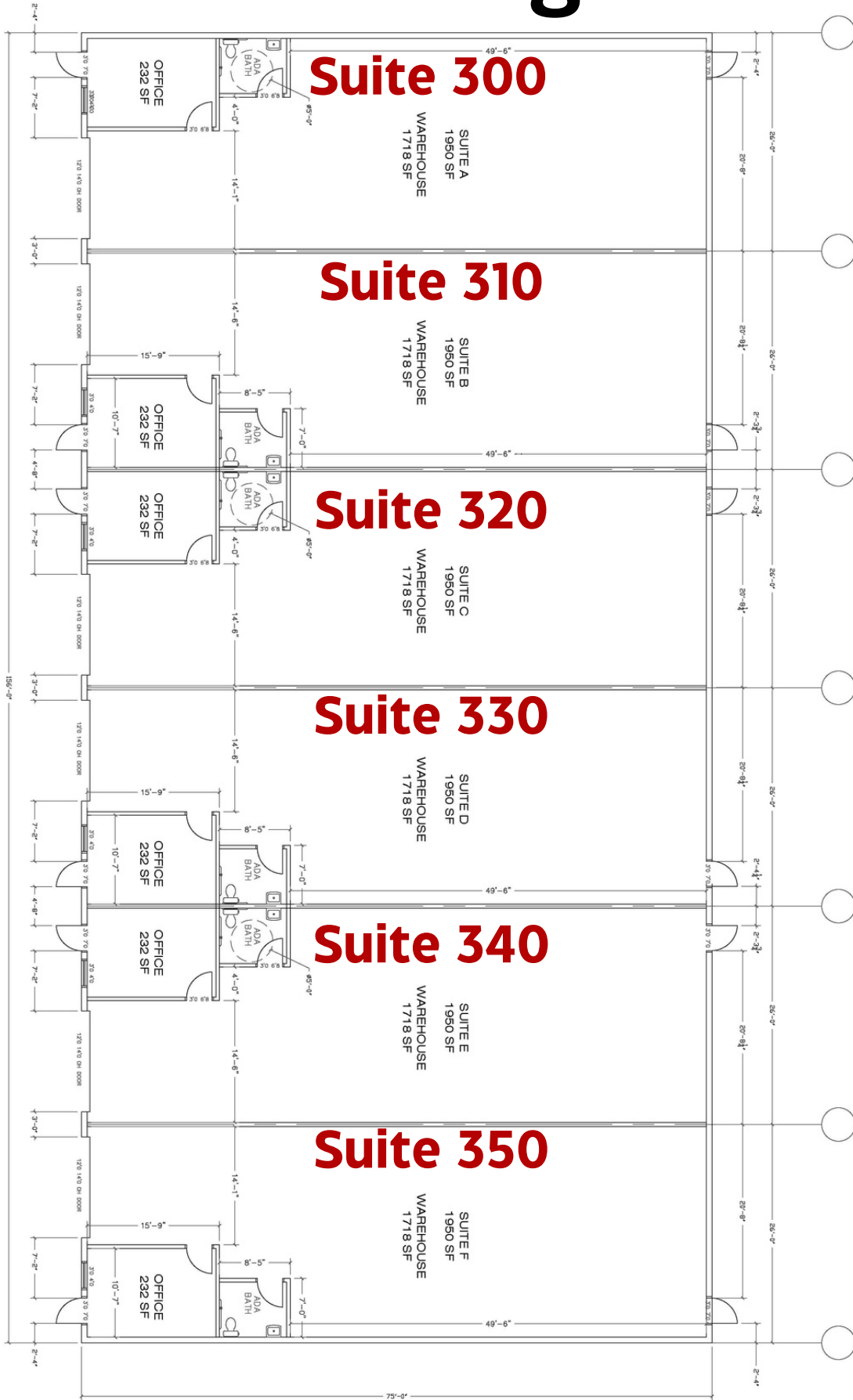
156' X 75'
SHELL WAREHOUSE BUILDING

Building 2



156' X 75'
SHELL WAREHOUSE BUILDING

Building 3



156' X 75'
SHELL & WAREHOUSE BUILDING

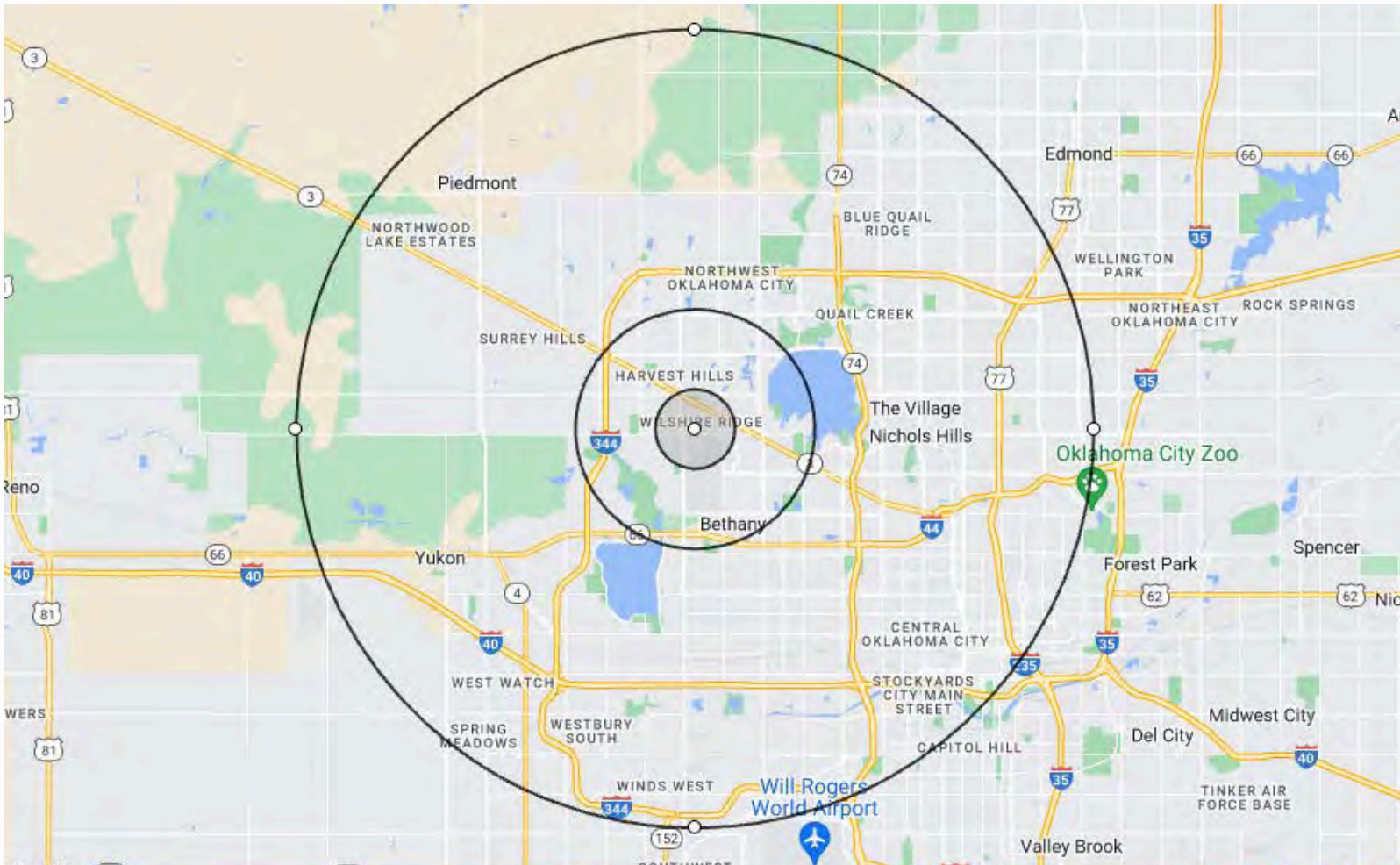
FOR LEASE



Johnson Commercial Group

JohnsonCommercialGroup.com

8101 Silver Crossing
Oklahoma City, OK 73132



Demographics

1 MILE

3 MILE

10 MILE

Population	8,056	71,148	515,731
Average Age	38	38	37
Employment	8,048	67,682	491,002
Households	3,344	28,782	210,839
Ave. Household Income	\$61,340	\$84,571	\$84,582
Median Household Value	\$46,057	\$63,738	\$62,833

Information Provide By CoStar

Chris Johnson
chris@jcgok.com
405.435.3572



BRICK & BEAM
REALTY

FOR LEASE

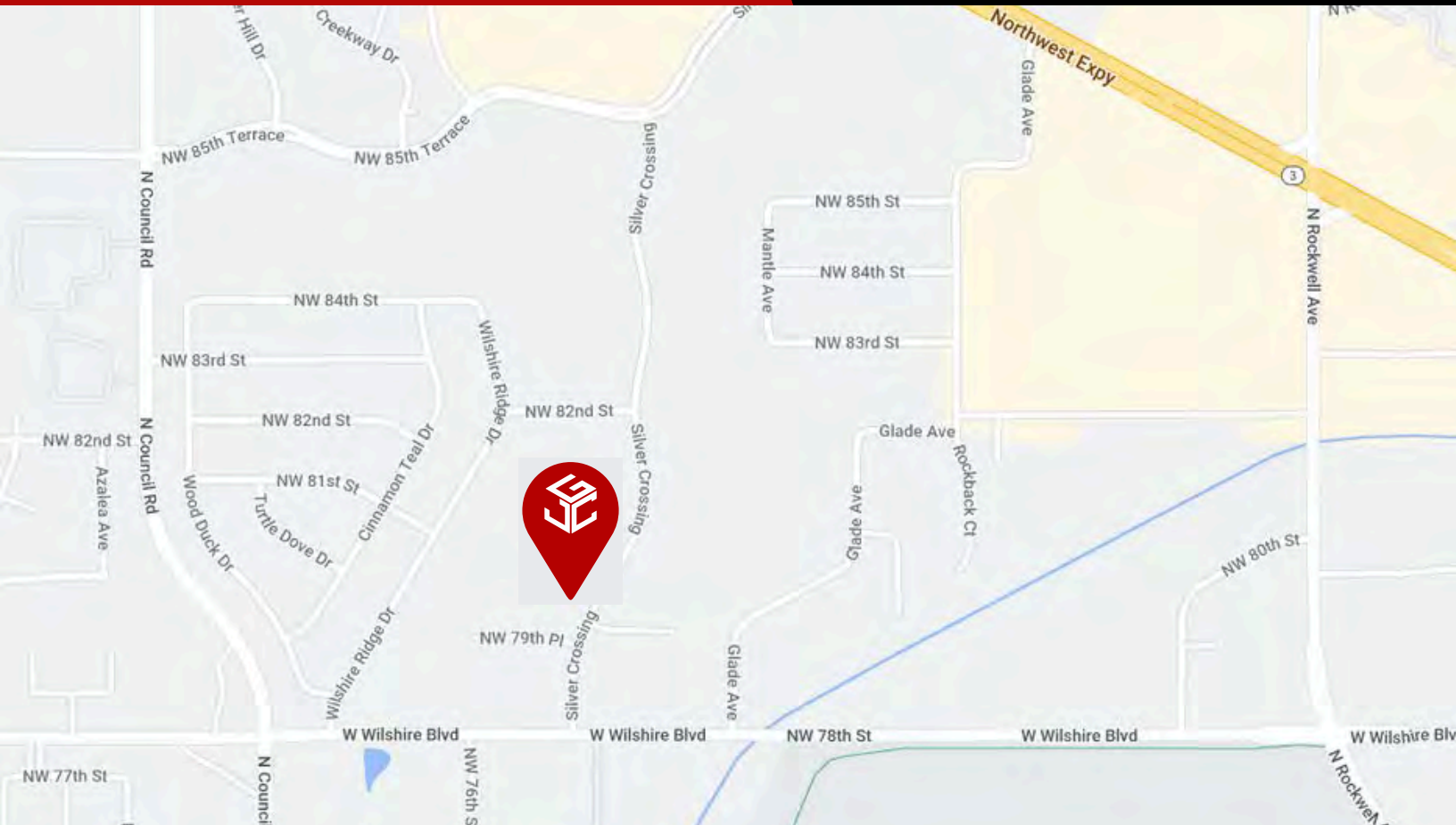
8101 Silver Crossing
Oklahoma City, OK 73132



Johnson

Commercial Group

JohnsonCommercialGroup.com



Disclaimer

A real estate broker is not authorized to give legal or tax advice. No representation is made by Johnson Commercial Group or Brick & Beam Realty its agents or employees, as to the legal effect or tax consequences of the information contained herein or any transaction relating thereto. Although all information furnished regarding property sales or financing options are from sources deemed to be reliable, such information has not been verified and no express representation is made on, or is in any way implied as to the accuracy thereof and is subject to errors, omissions, change of price, or other conditions prior to sale or withdrawal without notice. *OWNER IS A LICENSED REAL ESTATE BROKER*

Chris Johnson
chris@jcgok.com
405.435.3572



BRICK & BEAM
REALTY