



# WESTCHASE CORPORATE PARK

11201-11331 RICHMOND AVE



**DAN MEYER**

[danmeyer@mcmmanagement.com](mailto:danmeyer@mcmmanagement.com)

[meyercarrington.com](http://meyercarrington.com)

O: 713-668-2369

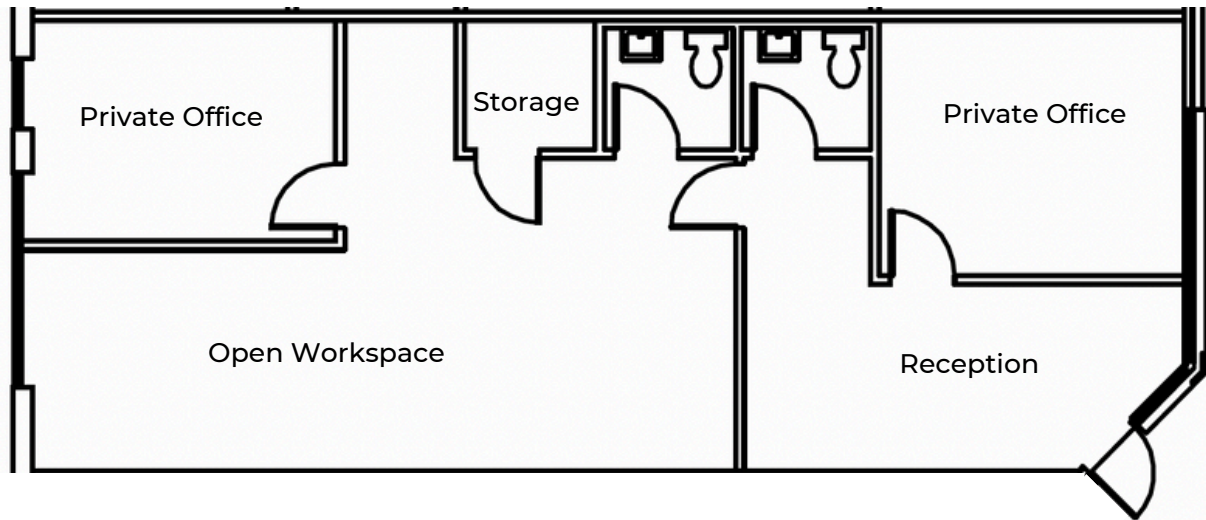
C: 713-806-8940

**MEYER CARRINGTON**



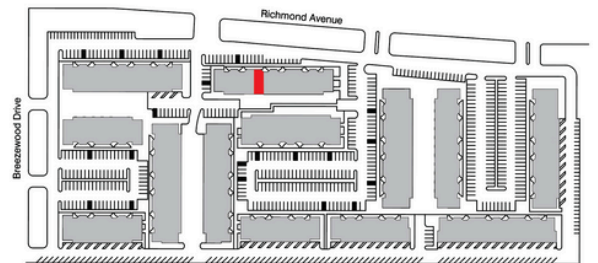
**11281 RICHMOND AVE**

**SUITE J107**  
1,183 SF



### Suite Layout

- 1,183 SF of office space
- Tenant controlled HVAC
- Retail exposure, facing Richmond Avenue
- Two private restrooms and storage closet
- Two private offices plus open workspace
- Drive up access
- Conveniently located with direct access to Beltway 8 and Westpark Tollway



**DAN MEYER**

[danmeyer@mcmanagement.com](mailto:danmeyer@mcmanagement.com)

[meyercarrington.com](http://meyercarrington.com)

O: 713-668-2369

C: 713-806-8940

**MEYER CARRINGTON**