

PHARR TRADE CENTER

INDUSTRIAL PROPERTY AVAILABLE

E HI LINE RD | PHARR, TX



FOR PROPERTY INFORMATION & SITE TOURS PLEASE CONTACT:

EDWARD VILLAREAL, SIOR
Managing Principal
956.731.4433 | edward@nairgv.com

RICK FLORES
Real Estate Agent
956.731.4411 | rflores@nairgv.com



OVERVIEW SUMMARY

PHARR TRADE CENTER | E HI LINE RD | PHARR, TX 78577

PROPERTY SUMMARY

TPA Group is developing a ±300,160 SF Class A warehouse in Pharr, TX, strategically located along E. Hi Line Road near US 281. This state-of-the-art facility will feature concrete tilt-wall construction for durability, a 32' clear height to accommodate high-volume storage, and 185' deep truck courts for seamless loading and unloading. Designed to meet modern logistics needs, the warehouse will include interior LED lighting for energy efficiency, edge-of-dock levelers for enhanced dock operations, an ESFR re protection system for superior safety, and a ~3,000 SF spec office for administrative needs. Positioned near the Pharr International Bridge, this site's prime location offers tenants direct access to one of the largest U.S. - Mexico trade ports for cross border commerce. The building is set for completion in Q1 2027.

PROPERTY SPECIFICATIONS

Available Building Area SF:	±300,160 SF
Lot Size AC:	18.95 AC
Office / Showroom SF:	±3,000 SF
Clear Height:	32'
Roof System:	45 mil TPO Roof w/ R-20 Insulation
Construction:	Concrete Tilt Wall
Dock Equipment:	(34) - 40,000 lb Mechanical Dock Pit Levelers
Dock Doors:	±68 Over Head Doors / 2 Ramps
Column Spacing:	54' x 55'
Lighting:	30 FC LED Warehouse Lighting
Electric:	2,000 Amps
Fire Protection:	ESFR
Trailer Parking / Car Parking:	±79 Spaces / ±212 Spaces



PROPERTY HIGHLIGHTS

- 32' Clear Height
- 185' Deep Truck Court w/ 79 Trailer Parking Spaces
- ±68 Over Head Doors with (34) - 40,000 lb Mechanical Dock Pit Levelers
- ESFR Fire Protection
- Energy-efficient LED lighting
- Easy access to major trade corridor for U.S.- Mexico commerce

FOR LEASE | INDUSTRIAL PROPERTY

Disclaimer: The information contained herein was obtained from sources believed reliable. NAI STX makes no guarantees, warranties or representations as to the completeness or accuracy thereof. The presentation of this property is submitted subject to errors, omissions, change of price or conditions, prior sale/lease, or withdrawal without notice.

LOCATION OVERVIEW

PHARR TRADE CENTER | E HI LINE RD | PHARR, TX 78577



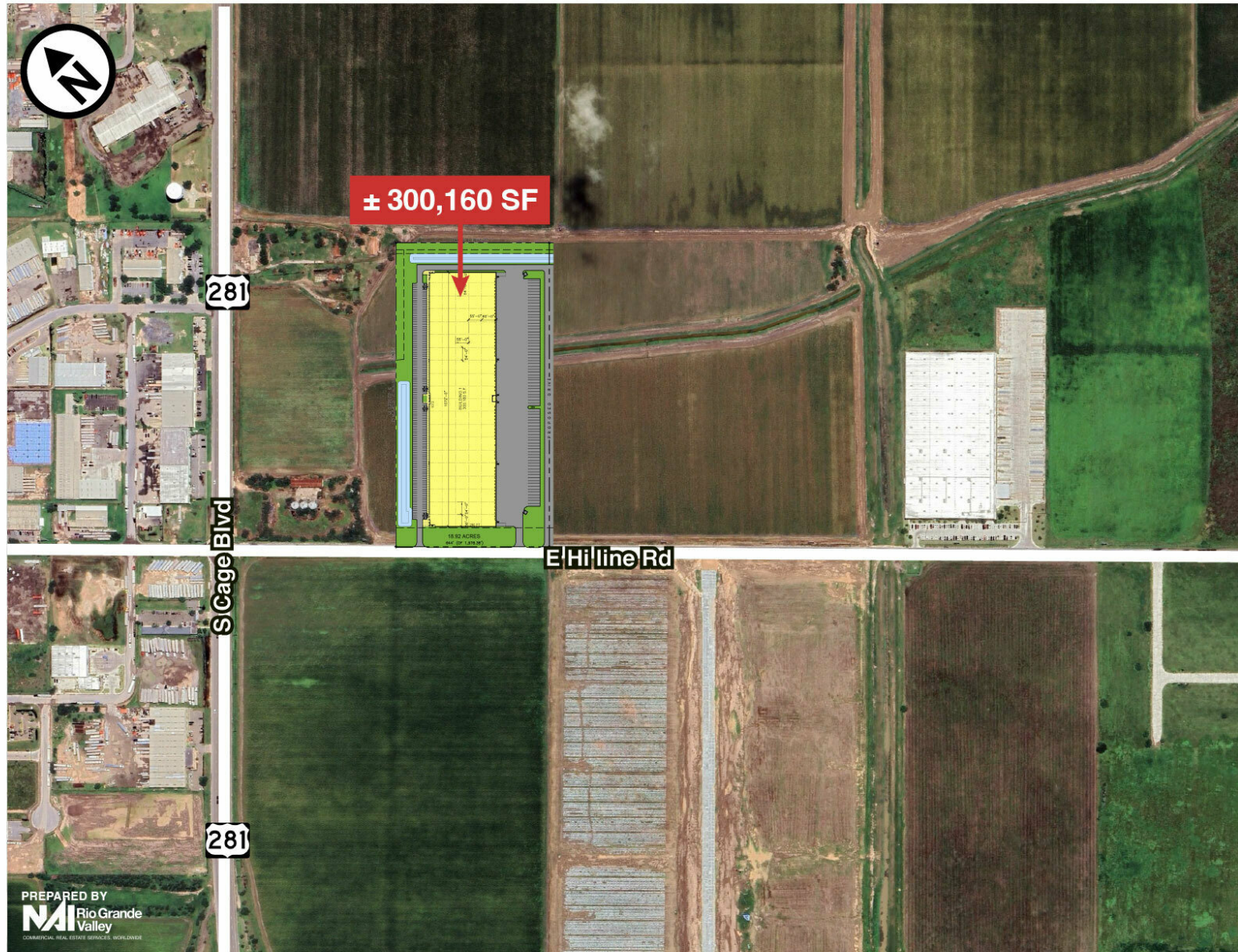
FOR LEASE | INDUSTRIAL PROPERTY

Disclaimer: The information contained herein was obtained from sources believed reliable. NAI STX makes no guarantees, warranties or representations as to the completeness or accuracy thereof. The presentation of this property is submitted subject to errors, omissions, change of price or conditions, prior sale/lease, or withdrawal without notice.



FOR LEASE | INDUSTRIAL PROPERTY

Disclaimer: The information contained herein was obtained from sources believed reliable. NAI STX makes no guarantees, warranties or representations as to the completeness or accuracy thereof. The presentation of this property is submitted subject to errors, omissions, change of price or conditions, prior sale/lease, or withdrawal without notice.

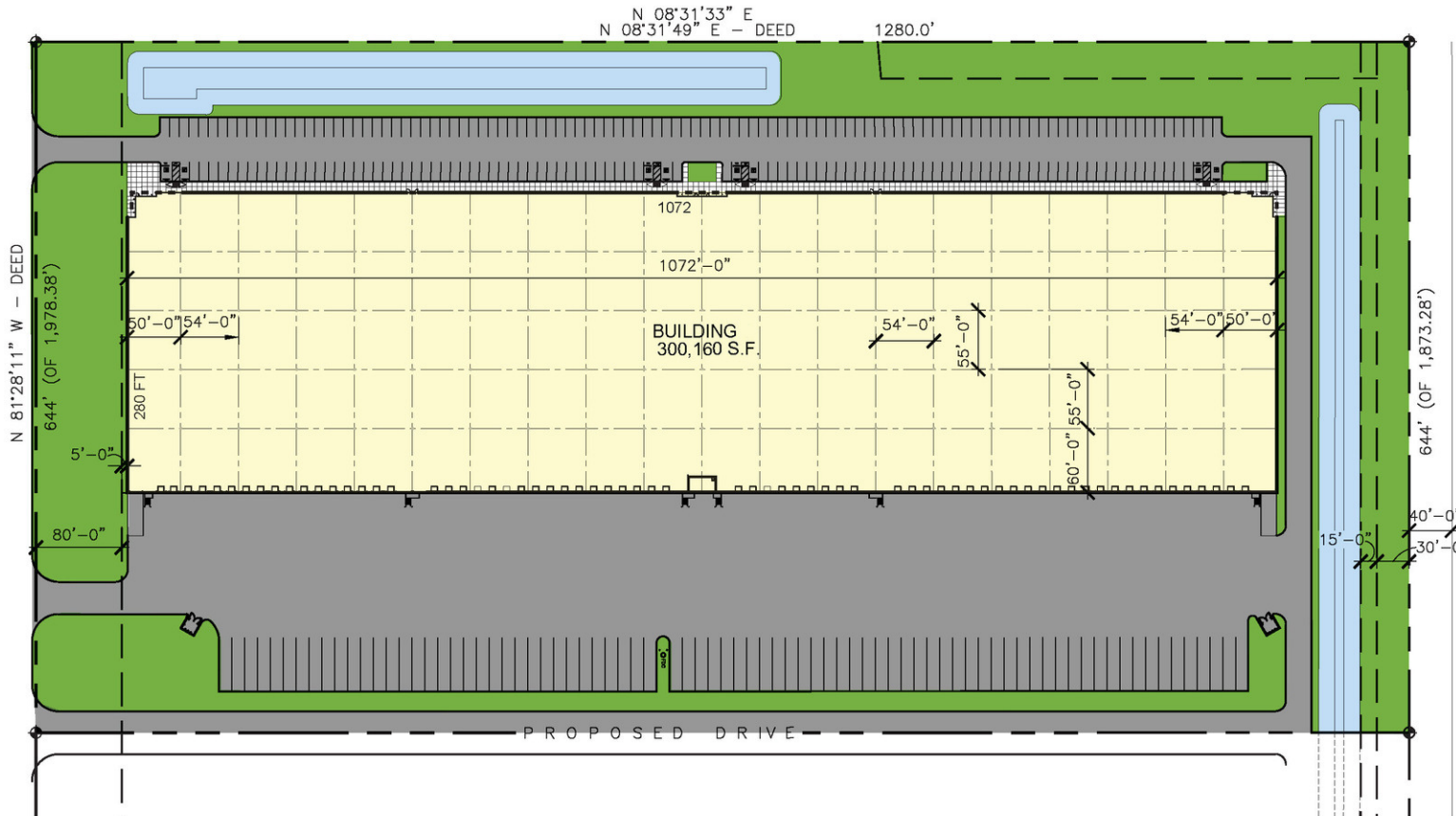


FOR LEASE | INDUSTRIAL PROPERTY

Disclaimer: The information contained herein was obtained from sources believed reliable. NAI STX makes no guarantees, warranties or representations as to the completeness or accuracy thereof. The presentation of this property is submitted subject to errors, omissions, change of price or conditions, prior sale/lease, or withdrawal without notice.

SITE PLAN

PHARR TRADE CENTER | E HI LINE RD | PHARR, TX 78577



300,160 S.F. INDUSTRIAL BUILDING SHELL
AT EAST HIGHLINE ROAD, PHARR TX.

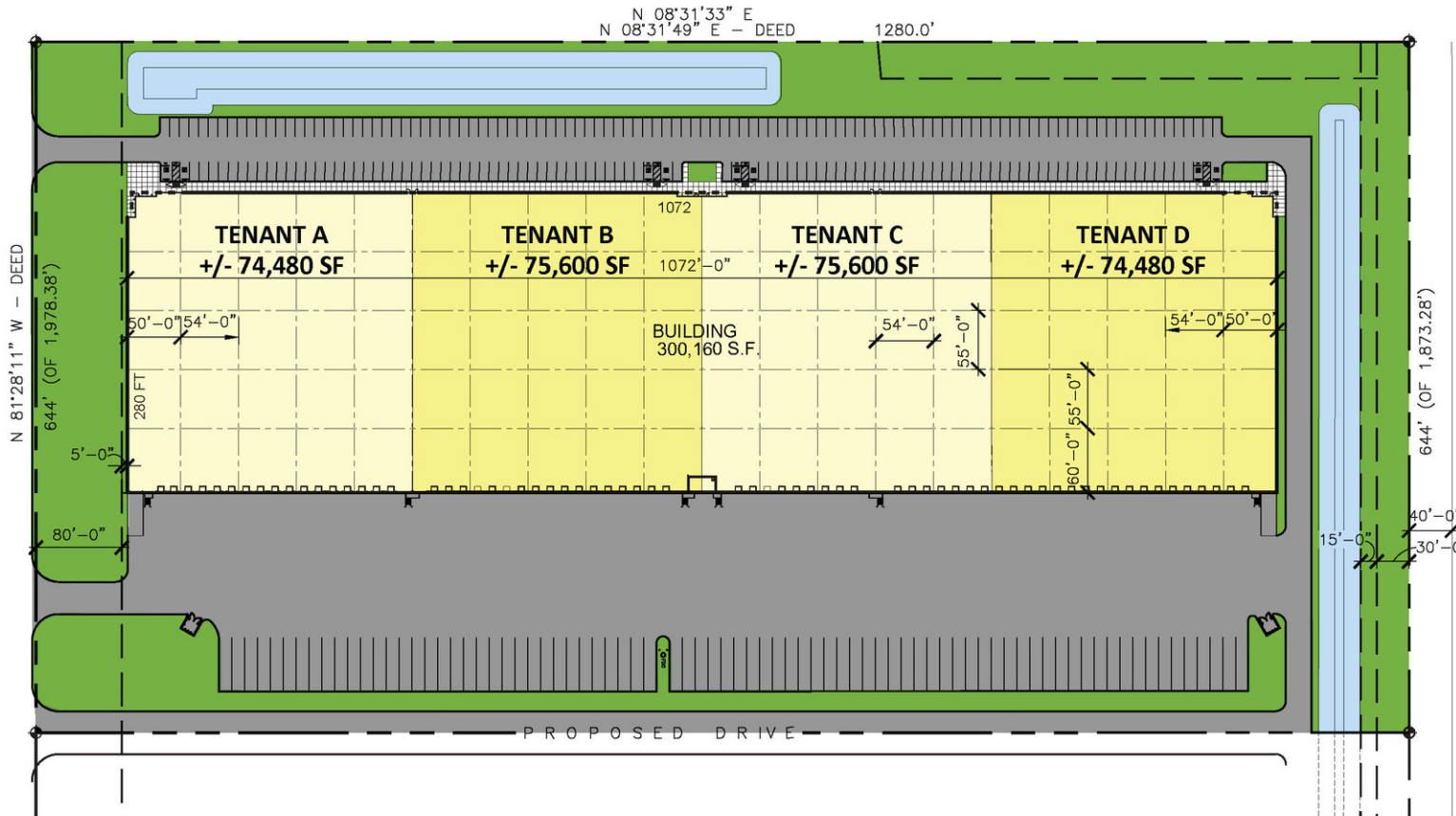
CONCEPTUAL	OPTION "E"
SITE PLAN	
05/30/2025	
SCALE: NTS	A1.0
PROJECT NO.	2162501

FOR LEASE | INDUSTRIAL PROPERTY

Disclaimer: The information contained herein was obtained from sources believed reliable. NAI STX makes no guarantees, warranties or representations as to the completeness or accuracy thereof. The presentation of this property is submitted subject to errors, omissions, change of price or conditions, prior sale/lease, or withdrawal without notice.

SITE PLAN: LEASING PLAN

PHARR TRADE CENTER | E HI LINE RD | PHARR, TX 78577



300,160 S.F. INDUSTRIAL BUILDING SHELL
AT EAST HIGHLINE ROAD, PHARR TX.

CONCEPTUAL	OPTION "E"
SITE PLAN	
05/30/2025	
SCALE: NTS	A1.0
PROJECT NO.	2162501

THESE DRAWINGS AND INFORMATION CONTAINED HEREIN ARE PROPERTY AND THE SOLE PROPERTY OF THE WARREN GROUP ARCHITECTS, INC. THEY MAY NOT BE REUSED, REPRODUCED OR ALTERED IN ANY WAY WITHOUT PRIOR WRITTEN APPROVAL FROM AND APPROPRIATE COMPENSATION TO THE WARREN GROUP ARCHITECTS, INC.

FOR LEASE | INDUSTRIAL PROPERTY

Disclaimer: The information contained herein was obtained from sources believed reliable. NAI STX makes no guarantees, warranties or representations as to the completeness or accuracy thereof. The presentation of this property is submitted subject to errors, omissions, change of price or conditions, prior sale/lease, or withdrawal without notice.

ELEVATIONS

PHARR TRADE CENTER | E HI LINE RD | PHARR, TX 78577



FOR LEASE | INDUSTRIAL PROPERTY

Disclaimer: The information contained herein was obtained from sources believed reliable. NAI STX makes no guarantees, warranties or representations as to the completeness or accuracy thereof. The presentation of this property is submitted subject to errors, omissions, change of price or conditions, prior sale/lease, or withdrawal without notice.

FOR INFORMATION & SITE TOURS CONTACT:

EDWARD VILLAREAL, SIOR

NAI RIO GRANDE VALLEY

Managing Principal

edward@nairgv.com

956.731.4433

RICK FLORES

NAI RIO GRANDE VALLEY

Real Estate Agent

rflores@nairgv.com

956.731.4411



800 W Dallas Ave, McAllen, TX 78501

nairgv.com

956.994.8900

The information contained herein is proprietary and strictly confidential. It is intended to be reviewed only by the party receiving it from NAI Rio Grande Valley, and should not be made available to any other person or entity without the written consent of the Broker. This document has been prepared to provide summary, unverified information to prospective purchasers, and to establish only a preliminary level of interest in the subject property. The information contained herein is not a substitute for a thorough due diligence investigation. NAI Rio Grande Valley has not made any investigation, and make no warranty or representation, with respect to the income or expenses for the subject property, the future projected financial performance of the property, the size and square footage of the property and improvements, the presence or absence of contaminating substances, PCB's or asbestos, the compliance with State and Federal regulations, the physical condition of improvements thereon, or the financial condition or business prospects of any tenant, or any tenant's plans or intentions to continue occupancy of the subject property.

The information contained herein has been obtained from sources we believe to be reliable; however, NAI Rio Grande Valley have not verified, and will not verify, any of the information contained herein, nor have the aforementioned Broker conducted any investigation regarding these matters and make no warranty or representation whatsoever regarding the accuracy or completeness of the information provided. All potential purchasers must take appropriate measures to verify all of the information set forth herein.



Information About Brokerage Services

Texas law requires all real estate license holders to give the following information about brokerage services to prospective buyers, tenants, sellers and landlords.

2-10-2025



TYPES OF REAL ESTATE LICENSE HOLDERS:

- **A BROKER** is responsible for all brokerage activities, including acts performed by sales agents sponsored by the broker.
- **A SALES AGENT** must be sponsored by a broker and works with clients on behalf of the broker.

A BROKER'S MINIMUM DUTIES REQUIRED BY LAW (A client is the person or party that the broker represents):

- Put the interests of the client above all others, including the broker's own interests;
- Inform the client of any material information about the property or transaction received by the broker;
- Answer the client's questions and present any offer to or counter-offer from the client; and
- Treat all parties to a real estate transaction honestly and fairly.

A LICENSE HOLDER CAN REPRESENT A PARTY IN A REAL ESTATE TRANSACTION:

AS AGENT FOR OWNER (SELLER/LANDLORD): The broker becomes the property owner's agent through an agreement with the owner, usually in a written listing to sell or property management agreement. An owner's agent must perform the broker's minimum duties above and must inform the owner of any material information about the property or transaction known by the agent, including information disclosed to the agent or subagent by the buyer or buyer's agent. **An owner's agent fees are not set by law and are fully negotiable.**

AS AGENT FOR BUYER/TENANT: The broker becomes the buyer/tenant's agent by agreeing to represent the buyer, usually through a written representation agreement. A buyer's agent must perform the broker's minimum duties above and must inform the buyer of any material information about the property or transaction known by the agent, including information disclosed to the agent by the seller or seller's agent. **A buyer/tenant's agent fees are not set by law and are fully negotiable.**

AS AGENT FOR BOTH - INTERMEDIARY: To act as an intermediary between the parties the broker must first obtain the written agreement of *each party* to the transaction. The written agreement must state who will pay the broker and, in conspicuous bold or underlined print, set forth the broker's obligations as an intermediary. A broker who acts as an intermediary:

- Must treat all parties to the transaction impartially and fairly;
- May, with the parties' written consent, appoint a different license holder associated with the broker to each party (owner and buyer) to communicate with, provide opinions and advice to, and carry out the instructions of each party to the transaction.
- Must not, unless specifically authorized in writing to do so by the party, disclose:
 - that the owner will accept a price less than the written asking price;
 - that the buyer/tenant will pay a price greater than the price submitted in a written offer; and
 - any confidential information or any other information that a party specifically instructs the broker in writing not to disclose, unless required to do so by law.

AS SUBAGENT: A license holder acts as a subagent when aiding a buyer in a transaction without an agreement to represent the buyer. A subagent can assist the buyer but does not represent the buyer and must place the interests of the owner first.

TO AVOID DISPUTES, ALL AGREEMENTS BETWEEN YOU AND A BROKER SHOULD BE IN WRITING AND CLEARLY ESTABLISH:

- The broker's duties and responsibilities to you, and your obligations under the representation agreement.
- Who will pay the broker for services provided to you, when payment will be made and how the payment will be calculated.

LICENSE HOLDER CONTACT INFORMATION: This notice is being provided for information purposes. It does not create an obligation for you to use the broker's services. Please acknowledge receipt of this notice below and retain a copy for your records.

NAI Rio Grande Valley	9008410	laurap@nairgv.com	956-994-8900
Licensed Broker /Broker Firm Name or Primary Assumed Business Name	License No.	Email	Phone
Laura Liza Paz	437175	laurap@nairgv.com	956-994-8900
Designated Broker of Firm	License No.	Email	Phone
Licensed Supervisor of Sales Agent/ Associate	License No.	Email	Phone
Edward Villareal	467182	edward@nairgv.com	956-994-8900
Sales Agent/Associate's Name	License No.	Email	Phone

Buyer/Tenant/Seller/Landlord Initials

Date