



112 E Oak Ave | Visalia, CA

Property For Sale

1005 N Demaree Street
Visalia, California 93291
O | 559.754.3020
F | 559.429.4016
www.mdgre.com

GRAHAM | **& ASSOCIATES**

Matt Graham
Lic# 01804235
www.mdgre.com

to learn more, visit: www.mdgre.com

PROPERTY DETAILS

Address: 112 E Oak Ave | Visalia, CA

APN: 094-281-009

Building Size: 2,845 +/- Sq. Ft.

Lot Size: 4,068 +/- Sq. Ft.

Zoning CDT

Sales Price \$339,000.00

Additional Comments:

Historic downtown Visalia building available for sale. The once “Ag Commissioner’s Building” is a relic to our County and has great history and bones. With it’s walking distance proximity to all downtown amenities - it makes for an outstanding location for any office or retail building. Conveniently located next to City Parking. Please call for further details.



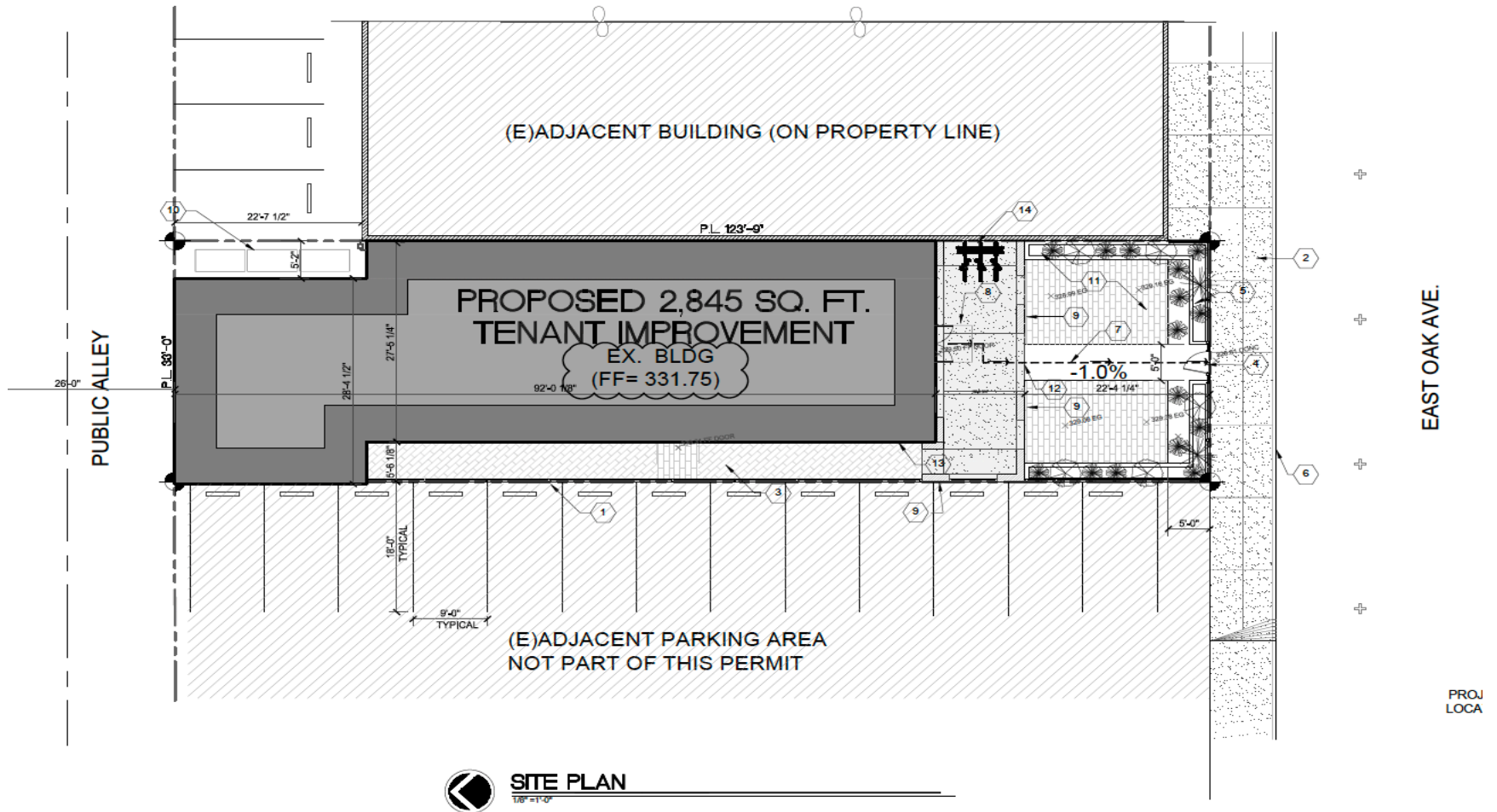
Contact Broker:
Matt Graham
Lic# 01804235

to learn more, visit: www.mdgre.com

1005 N Demaree Street
Visalia, California 93291
O | 559.754.3020

PLEASE NOTE: ALL INFORMATION AND REPRESENTATION MADE HEREIN, WHILE NOT GUARANTEED, HAVE BEEN SECURED FROM SOURCES WE BELIEVE TO BE RELIABLE, HOWEVER, THEY ARE NOT WARRANTED BY MATT GRAHAM & ASSOCIATES AND ARE SUBJECT TO CHANGE WITHOUT NOTICE.

FLOOR PLAN



PLEASE NOTE: ALL INFORMATION AND REPRESENTATION MADE HEREIN, WHILE NOT GUARANTEED, HAVE BEEN SECURED FROM SOURCES WE BELIEVE TO BE RELIABLE, HOWEVER, THEY ARE NOT WARRANTED BY MATT GRAHAM & ASSOCIATES AND ARE SUBJECT TO CHANGE WITHOUT NOTICE.

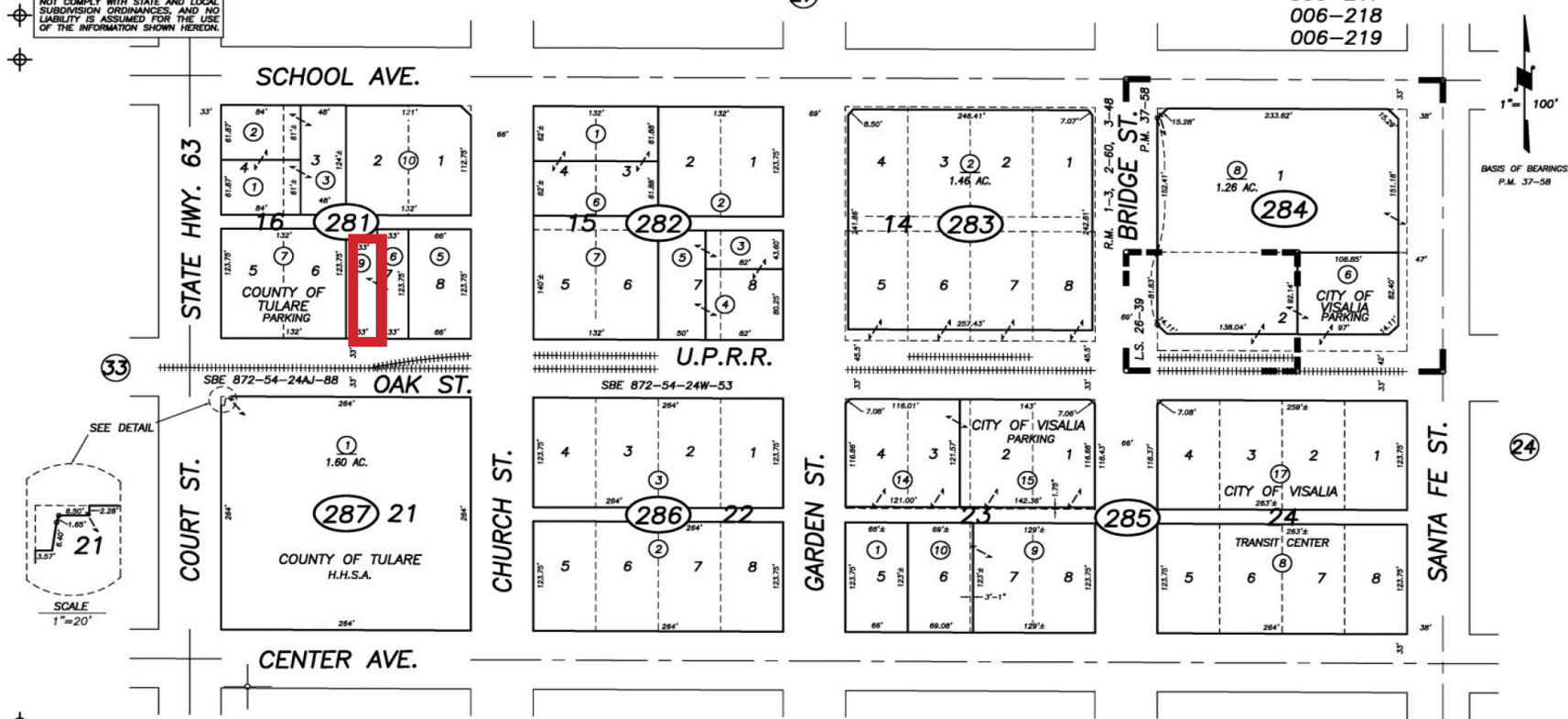
TAX MAP

N1/2 OF NE1/4 OF SW1/4 SEC.29, T.18R., R.25E., M.D.B.&M.

Tax Area Codes 094-28

006-216
006-217
006-218
006-219

DISCLAIMER
THIS MAP WAS PREPARED FOR LOCAL PROPERTY ASSESSMENT PURPOSES ONLY AND THE PARCELS SHOWN HEREON MAY NOT COMPLY WITH STATE AND LOCAL SUBDIVISION ORDINANCES, AND NO LIABILITY IS ASSUMED FOR THE USE OF THE INFORMATION SHOWN HEREON.

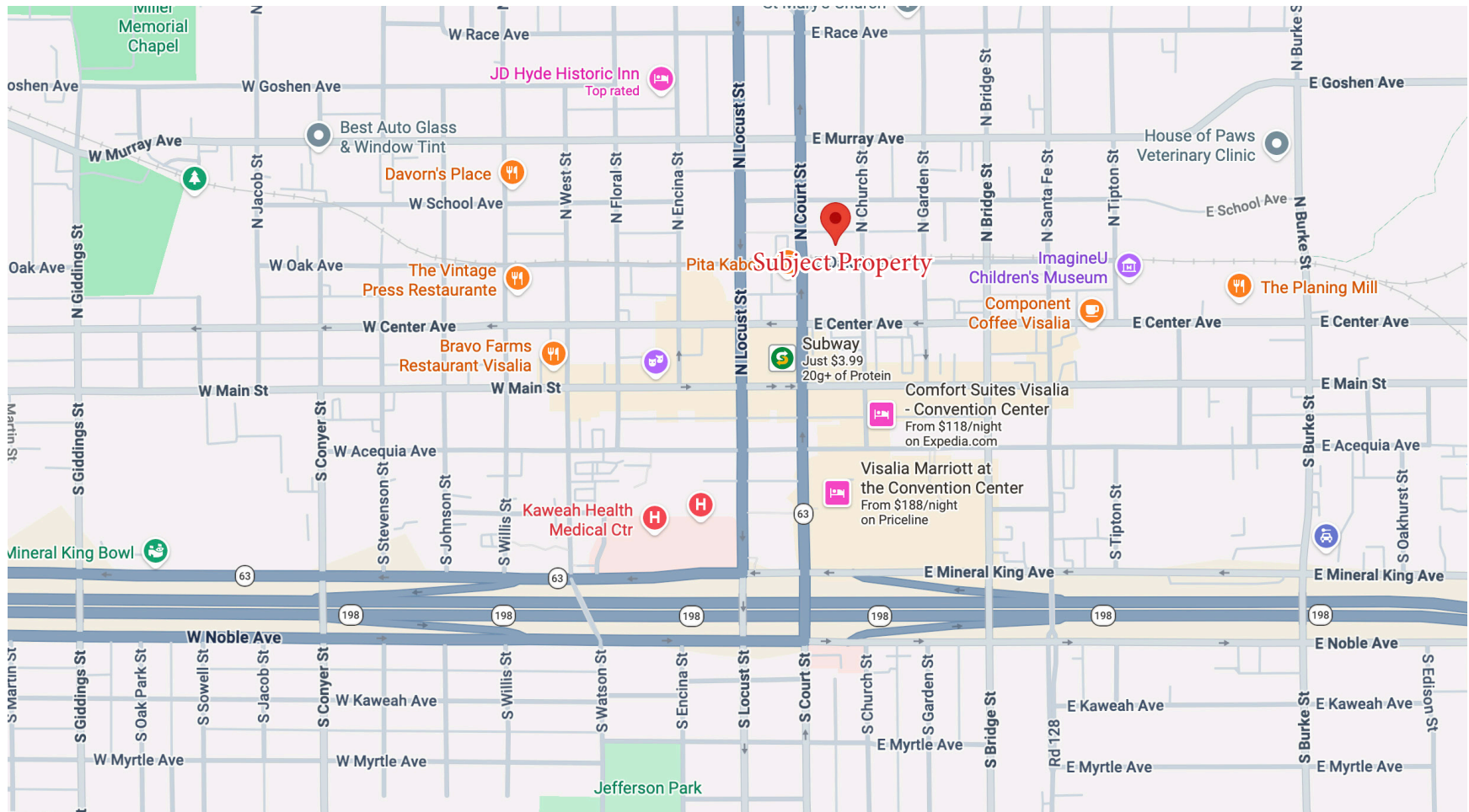


POR. PLAT OF VISALIA, R.M. 1-3, 2-60, 3-48
PARCEL MAP 3655, P.M. 37-58
RECORD OF SURVEY, L.S. 26-39

CITY OF VISALIA
ASSESSOR'S MAPS BK.094 , PG.28
COUNTY OF TULARE, CALIFORNIA, U.S.A.

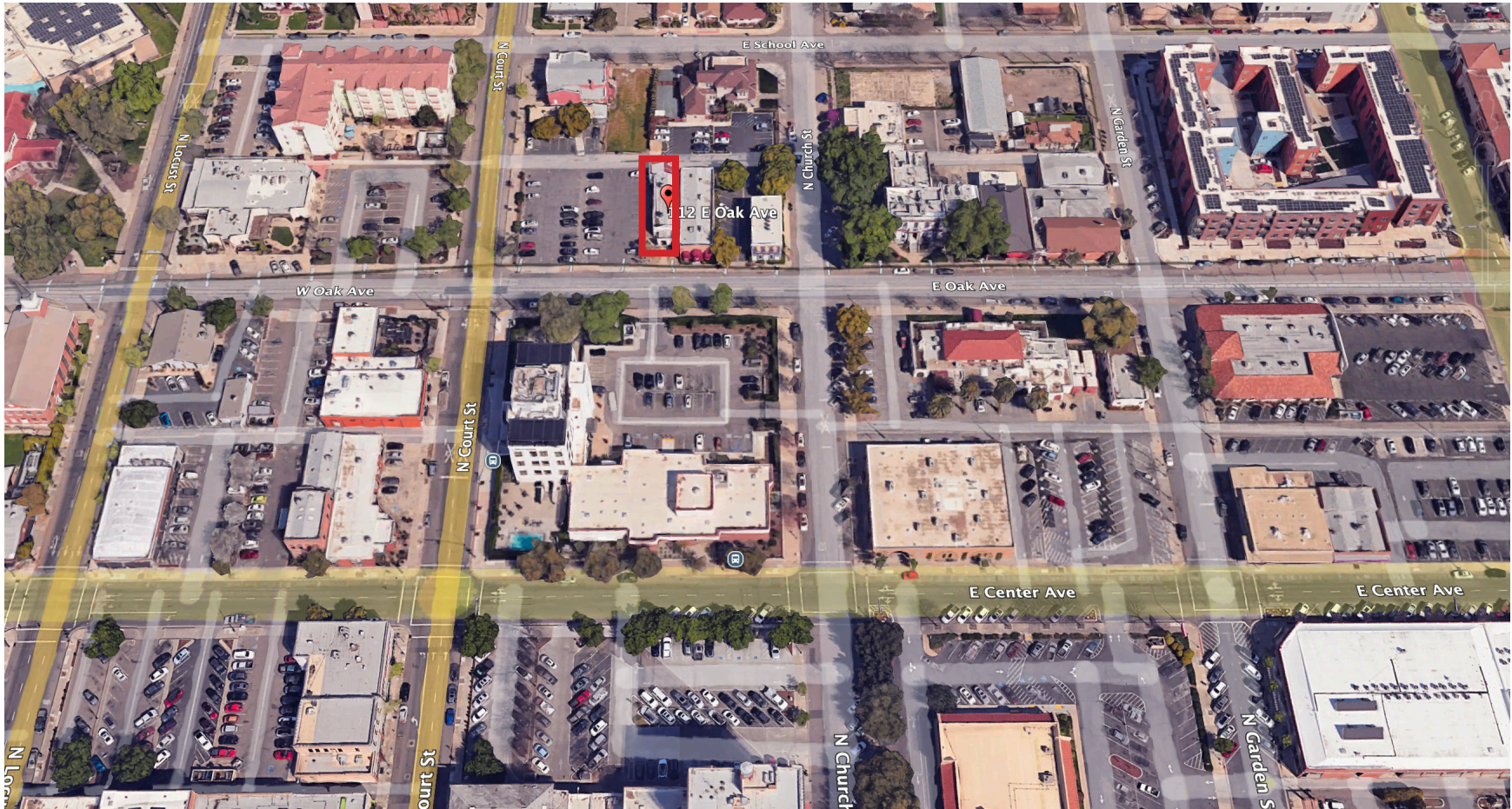
PLEASE NOTE: ALL INFORMATION AND REPRESENTATION MADE HEREIN, WHILE NOT GUARANTEED, HAVE BEEN SECURED FROM SOURCES WE BELIEVE TO BE RELIABLE, HOWEVER, THEY ARE NOT WARRANTED BY MATT GRAHAM & ASSOCIATES AND ARE SUBJECT TO CHANGE WITHOUT NOTICE.

LOCATION MAP



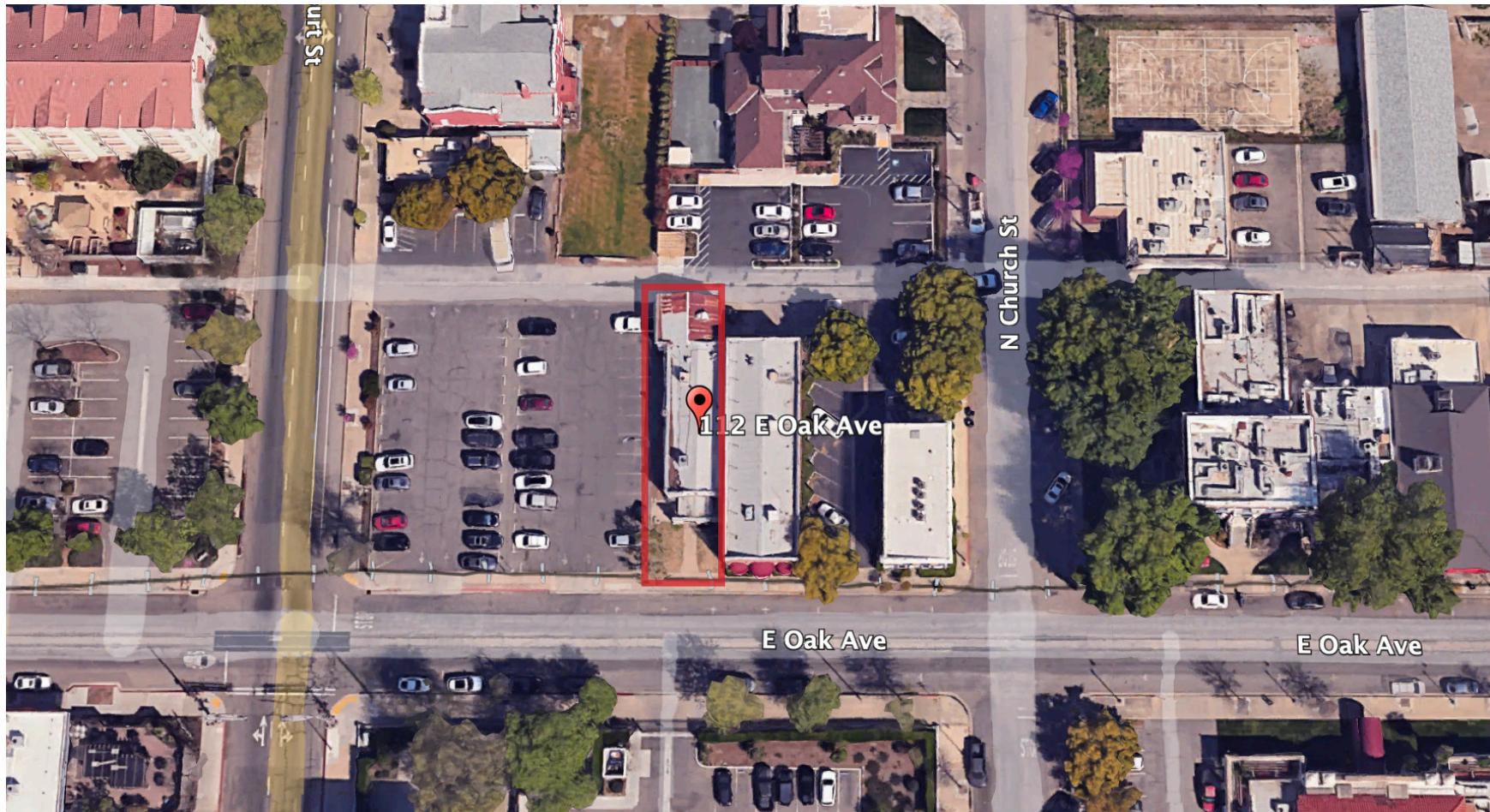
PLEASE NOTE: ALL INFORMATION AND REPRESENTATION MADE HEREIN, WHILE NOT GUARANTEED, HAVE BEEN SECURED FROM SOURCES WE BELIEVE TO BE RELIABLE, HOWEVER, THEY ARE NOT WARRANTED BY MATT GRAHAM & ASSOCIATES AND ARE SUBJECT TO CHANGE WITHOUT NOTICE.

PROPERTY LAYOUT



PLEASE NOTE: ALL INFORMATION AND REPRESENTATION MADE HEREIN, WHILE NOT GUARANTEED, HAVE BEEN SECURED FROM SOURCES WE BELIEVE TO BE RELIABLE, HOWEVER, THEY ARE NOT WARRANTED BY MATT GRAHAM & ASSOCIATES AND ARE SUBJECT TO CHANGE WITHOUT NOTICE.

PROPERTY PHOTOS



PLEASE NOTE: ALL INFORMATION AND REPRESENTATION MADE HEREIN, WHILE NOT GUARANTEED, HAVE BEEN SECURED FROM SOURCES WE BELIEVE TO BE RELIABLE, HOWEVER, THEY ARE NOT WARRANTED BY MATT GRAHAM & ASSOCIATES AND ARE SUBJECT TO CHANGE WITHOUT NOTICE.