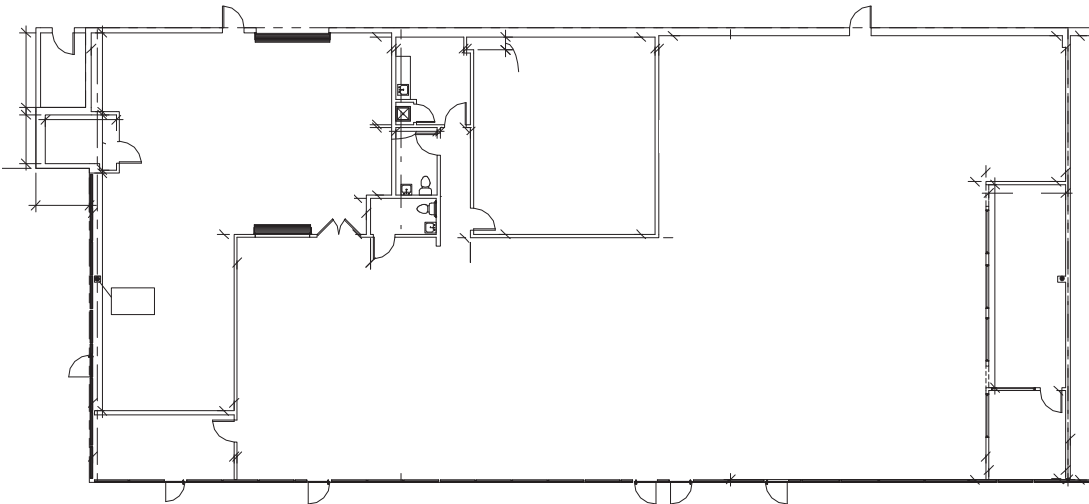


# MINNESOTA ROW

WINTER PARK

## BUILDING B

B100 - 8,515 SF Available February 2026



SITE PLAN



**FOUNDRY**  
COMMERCIAL

foundrycommercial.com

FOR MORE INFORMATION, PLEASE CONTACT:

ALEX ROSARIO   407.540.7713 Partner alex.rosario@foundrycommercial.com	KEVIN WILL   407.458.5888 Senior Associate kevin.will@foundrycommercial.com
--	---

