



TMC³ Collaborative Building:

The First TMC Collaborative Research Hub

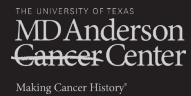
TMC | HELIX PARK

TMC³ Collaborative Building

Designed by world-renowned Elkus Manfredi Architects, the **250,000-SF** TMC³ Collaborative Building will house synergistic research initiatives for four founding institutions MD Anderson, Texas A&M University Health Science Center, the University of Texas Health Science Center at Houston, and Texas Medical Center.

The four-story, state-of-the-art building will foster ongoing collaboration between academic institutions and industry partners through a 43,000-SF joint research lab, office/co-working space and a shared IT infrastructure to facilitate idea exchange.

TMC³



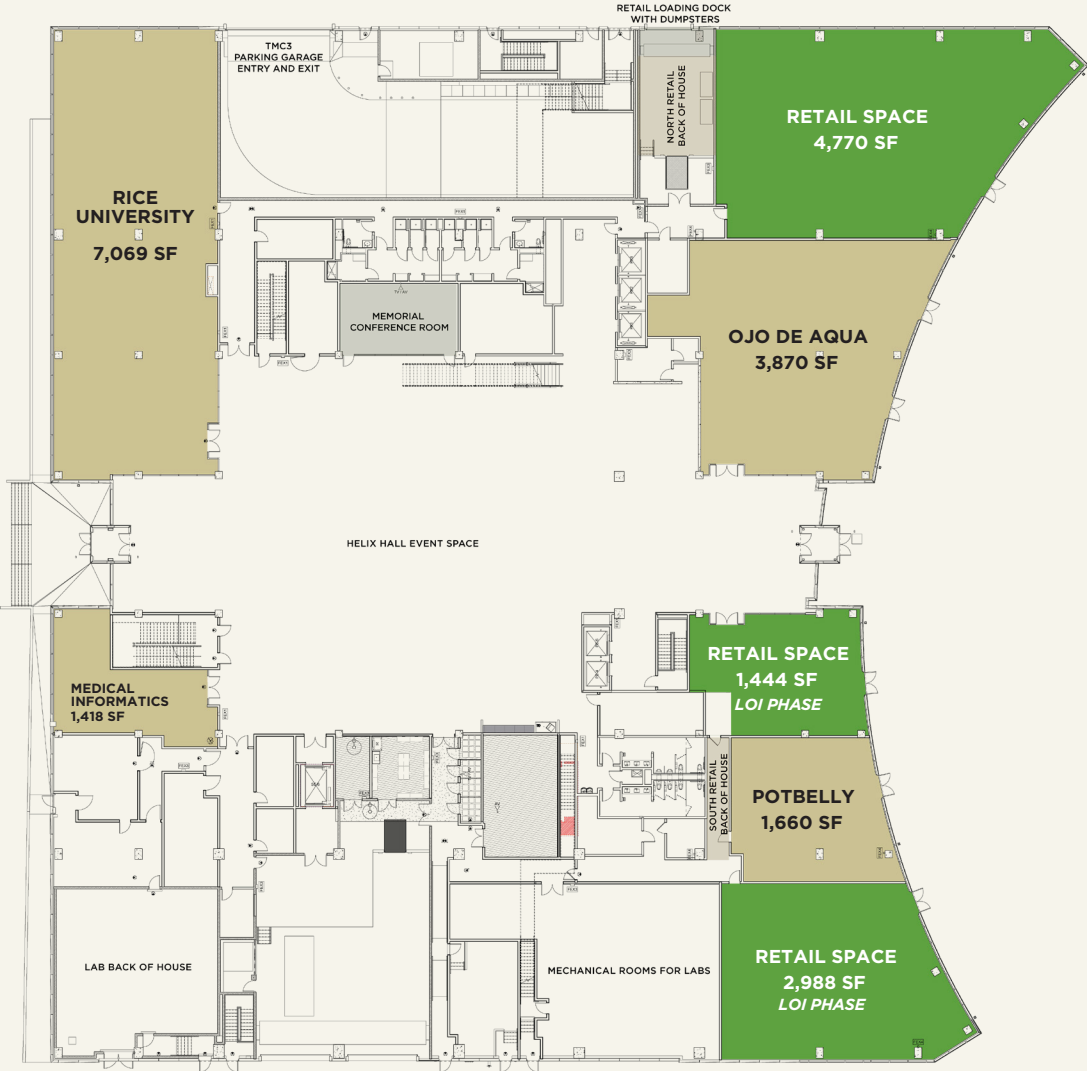
Building Benefits

- One Shared Resource Hub
- Collaborative Space for Research, Startups, and Venture Funding
- Event, Auditorium and Conference Room
- Restaurants and Retail
- Community Programming
- LEED Silver Certified



TMC³ COLLABORATIVE BUILDING

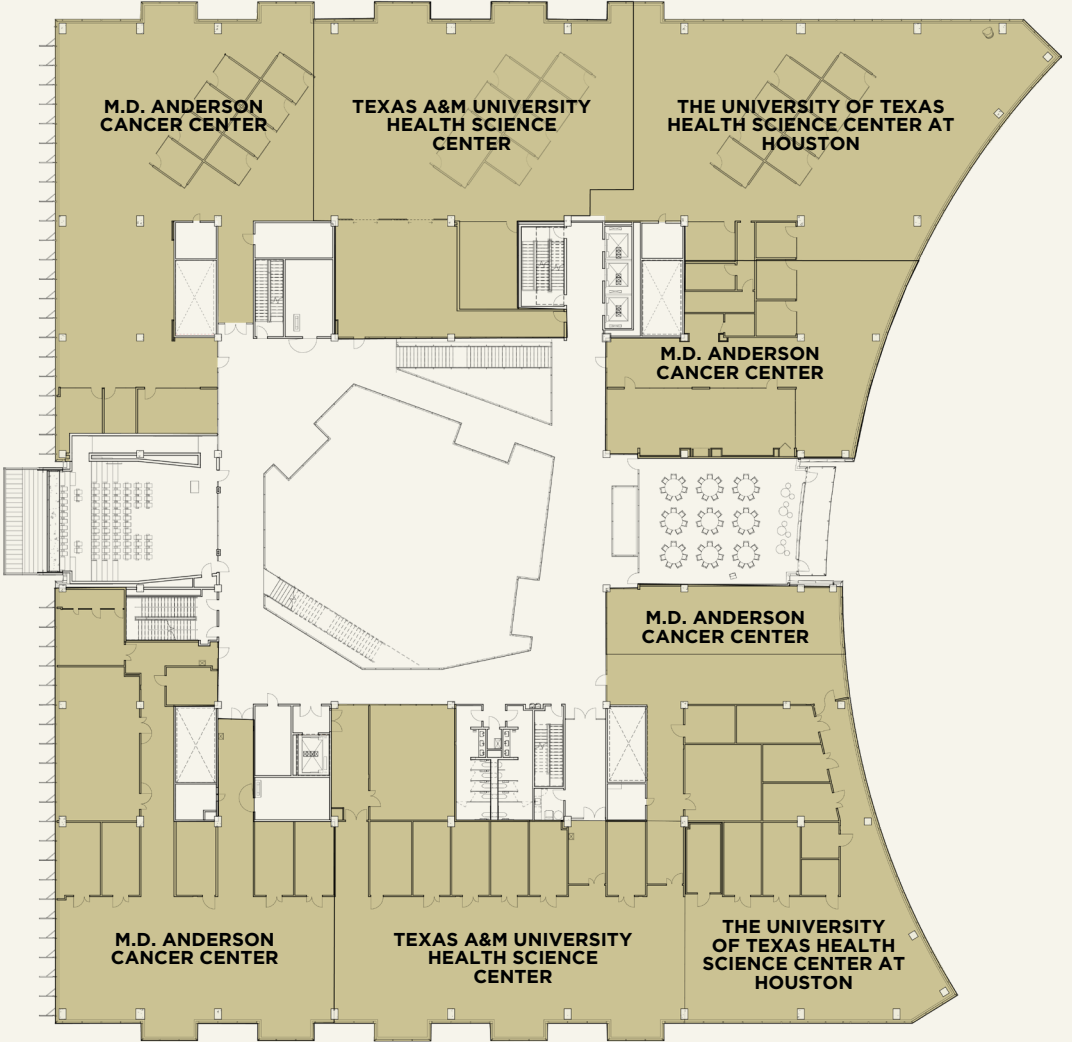
1st Floor Plan



 AVAILABLE FOR LEASE

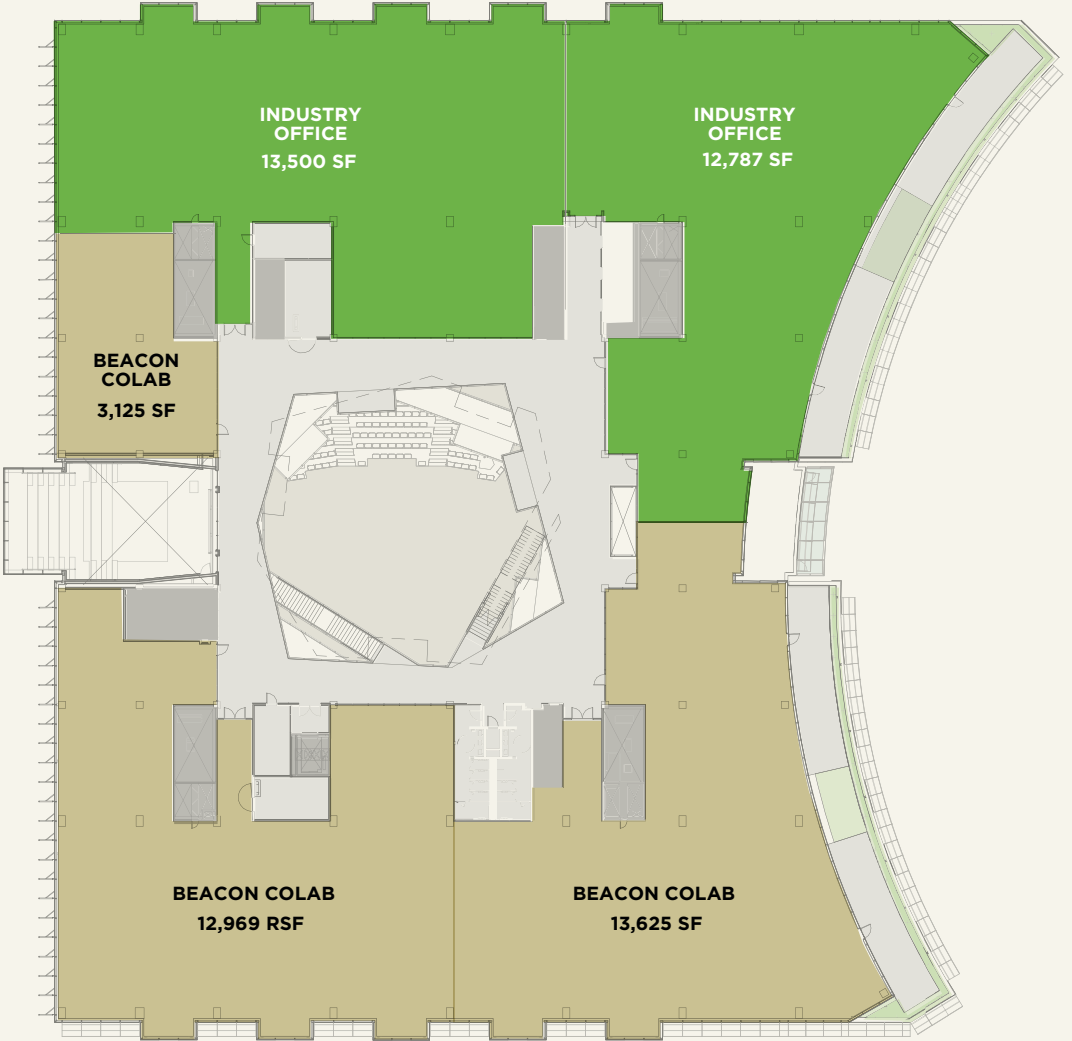
TMC³ COLLABORATIVE BUILDING

2nd Floor Plan



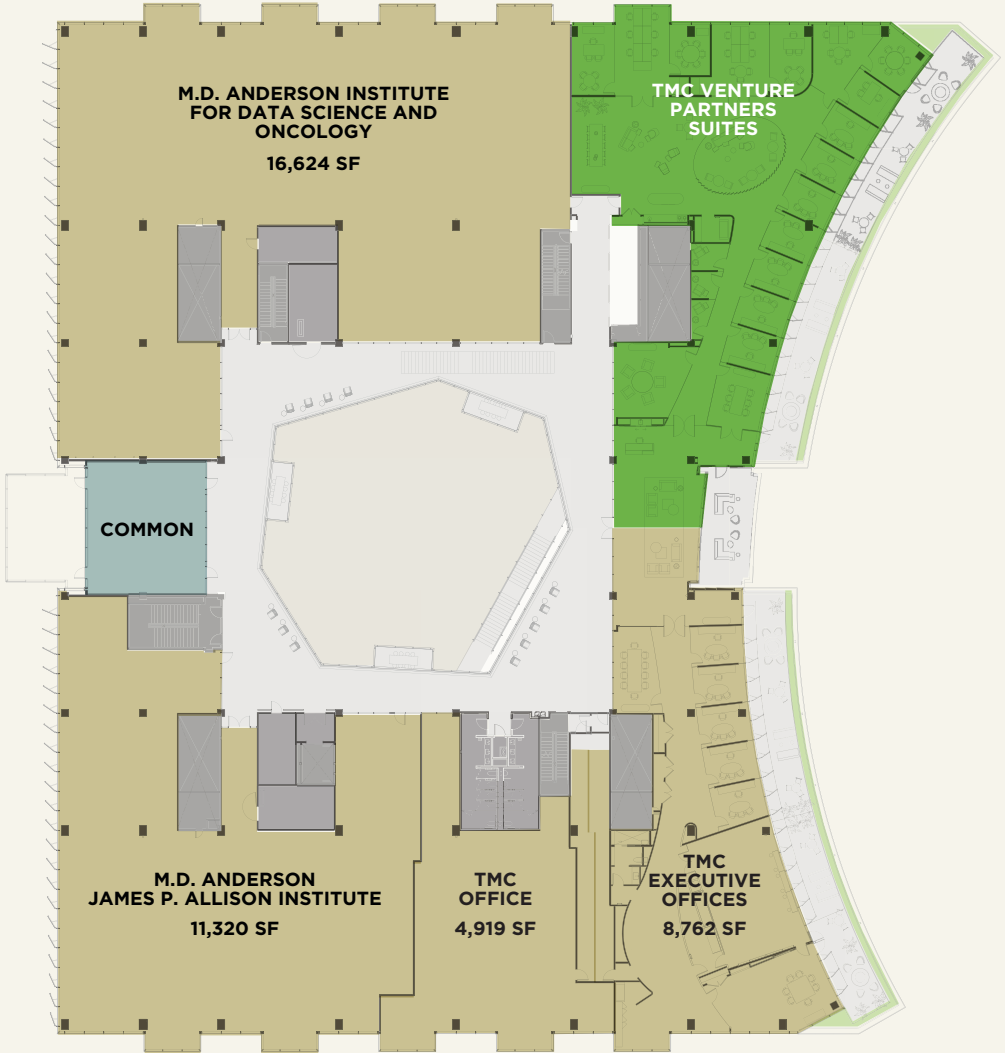
TMC³ COLLABORATIVE BUILDING

3rd Floor Plan



TMC³ COLLABORATIVE BUILDING

4th Floor Plan





FOR LEASING, PLEASE CONTACT:

Emily Gwaltney

📞 (713) 791-8821

✉️ EGwaltney@tmc.edu

TMC | HELIX PARK

tmchelixpark@tmc.edu
helixpark.com