



PREMIER
COMMERCIAL
PROPERTIES

FOR LEASE



Retail Space for Lease

607 County Road 10, Blaine, MN 55434

AREA AMENITIES

- * Highly visible retail corner, signalized intersection
- * Suite 104 – 882 rsf. Reception, 4 privates, storage and janitor closet w/ water
- * County Rd 10 in Blaine (Jefferson St NE & Co Rd 10) – 20,768 vehicles per day (MNDOT 2025)
- * Perfect location for medical or office – Join Cricket, Dentist, Allstate Insurance and Tax Plus Accountants
- * Zoning B-2 – Community Commercial District
- * Across from Northtown Shopping Center
- * Perfect set-up for Chiropractor or Physical therapy



PROPERTY DETAILS

Lease Rate: \$19.00 Gross
+ Electric & Phone

FOR MORE INFORMATION, CONTACT

Marty Fisher/Mike Fisher

763-862-2005

mfisher@premiercommercialproperties.com

mikefisher@premiercommercialproperties.com



PREMIER
COMMERCIAL
PROPERTIES

FOR LEASE

CONTACT: Marty Fisher

MOBILE: 612-708-2873

EMAIL: mfisher@premiercommercialproperties.com



- Nice common areas
- Lots of parking
- Signage to Cty Rd. 10
- Building signage available



PREMIER
COMMERCIAL
PROPERTIES

FOR LEASE

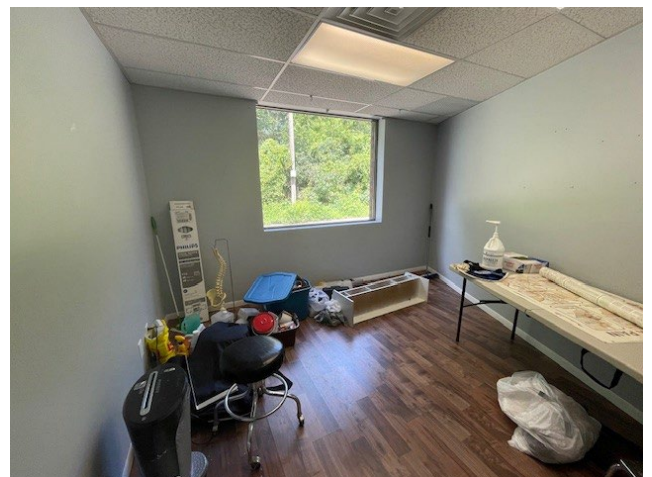
CONTACT: Marty Fisher

MOBILE: 612-708-2873

EMAIL: mfisher@premiercommercialproperties.com

Suite 104 882 SF -

Just off entrance, former chiropractic office
Reception, 4 privates, storage w/ water





PREMIER
COMMERCIAL
PROPERTIES

FOR LEASE

CONTACT: Marty Fisher

MOBILE: 612-708-2873

EMAIL: mfisher@premiercommercialproperties.com



Demographics 2025	1 Mile	3 Miles	5 Miles
Total Population	8,024	72,365	221,240
Total Households	3,257	27,655	81,688
Average Household Income	\$94,087	\$103,153	\$110,896

