

RIDGEFIELD BUSINESS CENTER FOR LEASE



1200

RIDGEFIELD BLVD

ASHEVILLE, NC

EXECUTIVE SUITE 270 | 525 SF

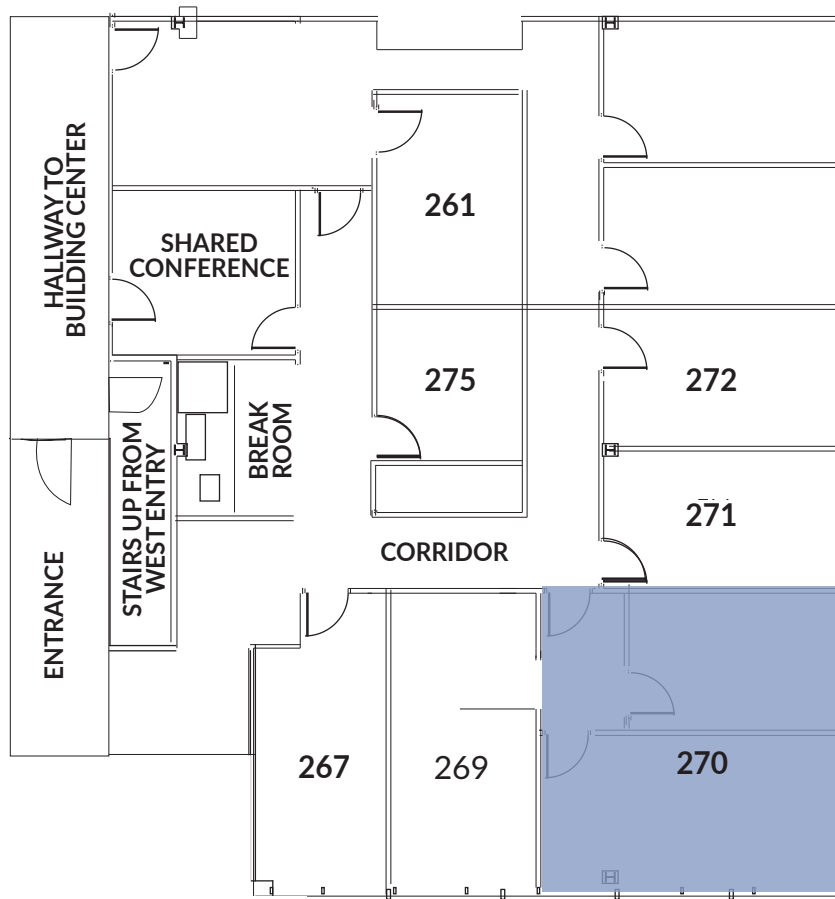
\$1,650/MO TOTAL
FULL SERVICE
2 ROOMS



AUSTIN WALKER | CCIM, SIOR
COMMERCIAL BROKER
C: 828.713.0777
AWALKER@WHITNEYCRE.COM

All information herein obtained from sources deemed reliable but not guaranteed, and may change or be updated without notice.

FLOOR PLAN & GALLERY



1200 RIDGEFIELD BLVD., EXECUTIVE SUITE 270 - FOR LEASE | WHITNEY COMMERCIAL REAL ESTATE

All information herein obtained from sources deemed reliable but not guaranteed, and may change or be updated without notice.

DESCRIPTION

Welcome to Ridgefield Business Center

This 100-acre, Class A office park is situated at Exit 33 (Brevard Road) off Interstate 26, one mile south of Interstate 40.

Ridgefield is adjacent to the Asheville Outlets,
and is mid-way between downtown Asheville and the Asheville Regional Airport.

Ridgefield offers all the amenities, location and attention to design detail found in larger US markets.
at the same time, it also offers the beauty and tranquility that can only be found
in the mountains of Western North Carolina.

PROPERTY HIGHLIGHTS

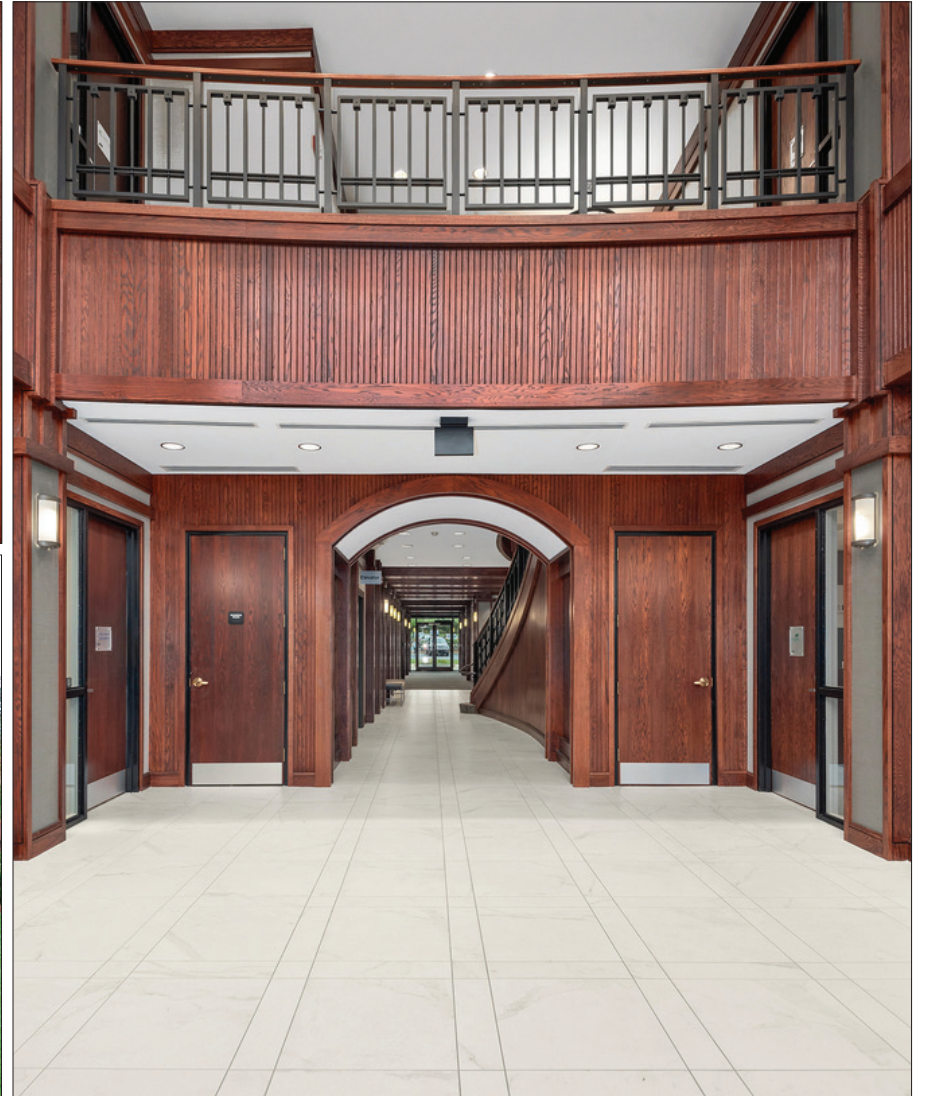
- FULL SERVICE IN ASHEVILLE'S PREMIERE OFFICE PARK
- MULTIPLE-SUITE AREA WITH SHARED CONFERENCE ROOM, KITCHENETTE
- 5 PARKING SPACES/1,000 SF
- CLOSE TO I-26 / I-40 & AMENITIES
- NO ANNUAL OPERATING COST RECONCILIATION
- PROFESSIONAL APPEAL
- WELL-MAINTAINED INTERIORS
- QUALITY FINISHES
- QUALITY COMMON-AREA AMENITIES
- ON-SITE MANAGEMENT
- 7 MI. TO DOWNTOWN ASHEVILLE
- 10 MI. TO ASHEVILLE REGIONAL AIRPORT
- SURROUNDED BY ALL AMENITIES AT I-26, EXIT 33



1200 RIDGEFIELD BLVD., EXECUTIVE SUITE 270 - FOR LEASE | WHITNEY COMMERCIAL REAL ESTATE

All information herein obtained from sources deemed reliable but not guaranteed, and may change or be updated without notice.

GALLERY



1200 RIDGEFIELD BLVD., EXECUTIVE SUITE 270 - FOR LEASE | WHITNEY COMMERCIAL REAL ESTATE

All information herein obtained from sources deemed reliable but not guaranteed, and may change or be updated without notice.