

DALLAS MEDICAL CENTER PLAZA IV

9 Medical Parkway | Farmers Branch, TX 75234

Medical Space For Lease

2,028 - 4,630 SF



Leasing Information:
214.461.2300

Elizabeth Madden
214.461.2366
emadden@lpc.com

Zoë Mysing
504.982.5799
zmysing@lpc.com

Douglas Maclay
214.461.2371
dmaclay@lpc.com

Lincoln

8140 Walnut Hill Lane
Suite 700
Dallas, TX 75231

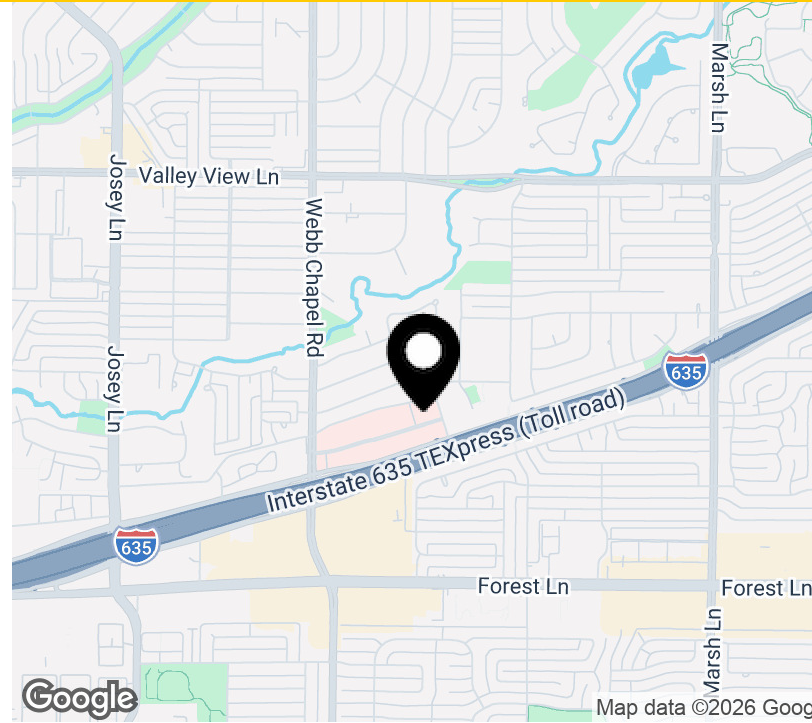
www.lpc.com

DALLAS MEDICAL CENTER PLAZA IV

9 Medical Parkway | Farmers Branch, TX 75234

Medical Space For Lease

1,546 - 5,841 SF



Property Highlights

- On Campus Medical Office Building
- Superior Location directly off of I-635
- Common Area Renovations Underway
- Ample Parking

Property Overview

2nd Generation Medical Office Space in Farmers Branch.
Located on the campus of the Dallas Medical Center.

| Availabilities | SF | Lease Rate | Date Available |
|----------------|----------|------------|----------------|
| Suite 103 | 2,557 SF | Negotiable | Available Now |
| Suite 201 | 2,028 SF | Negotiable | Available Now |
| Suite 301 | 4,630 SF | Negotiable | Available Now |
| Suite 302 | 2,748 SF | Negotiable | Available Now |
| Suite 303 | 3,096 SF | Negotiable | Available Now |
| Suite 304 | 5,841 SF | Negotiable | Available Now |
| Suite 305 | 1,546 SF | Negotiable | Available Now |
| Suite 306 | 4,888 SF | Negotiable | Available Now |
| Suite 307 | 2,291 SF | Negotiable | Available Now |
| Suite 308 | 2,355 SF | Negotiable | Available Now |

Elizabeth Madden

214.461.2366
emadden@lpc.com

Zoë Mysing

504.982.5799
zmysing@lpc.com

Douglas Maclay

214.461.2371
dmaclay@lpc.com

Lincoln

DALLAS MEDICAL CENTER PLAZA IV

9 Medical Parkway | Farmers Branch, TX 75234

Suite 103 - 2,557 RSF

2,557 SF



| Suite | Size |
|-------------|----------|
| ■ Suite 103 | 2,557 SF |

Elizabeth Madden **Zoë Mysing** **Douglas Maclay**
214.461.2366 504.982.5799 214.461.2371
emadden@lpc.com zmysing@lpc.com dmaclay@lpc.com

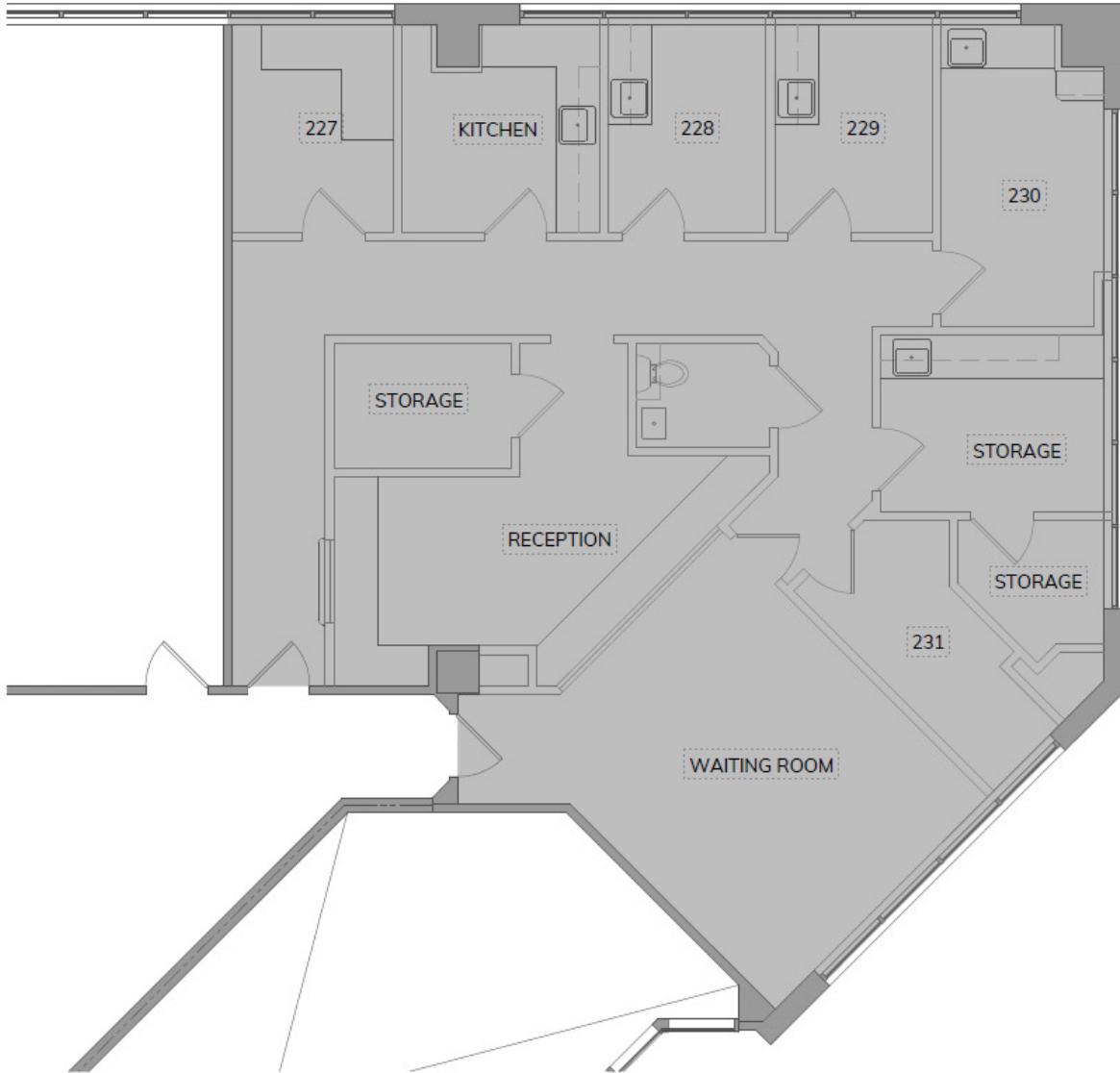
Lincoln

DALLAS MEDICAL CENTER PLAZA IV

9 Medical Parkway | Farmers Branch, TX 75234

Suite 201

2,028 SF



Suite

Suite 201

Size

2,028 SF

Elizabeth Madden

214.461.2366
emadden@lpc.com

Zoë Mysing

504.982.5799
zmysing@lpc.com

Douglas Maclay

214.461.2371
dmaclay@lpc.com

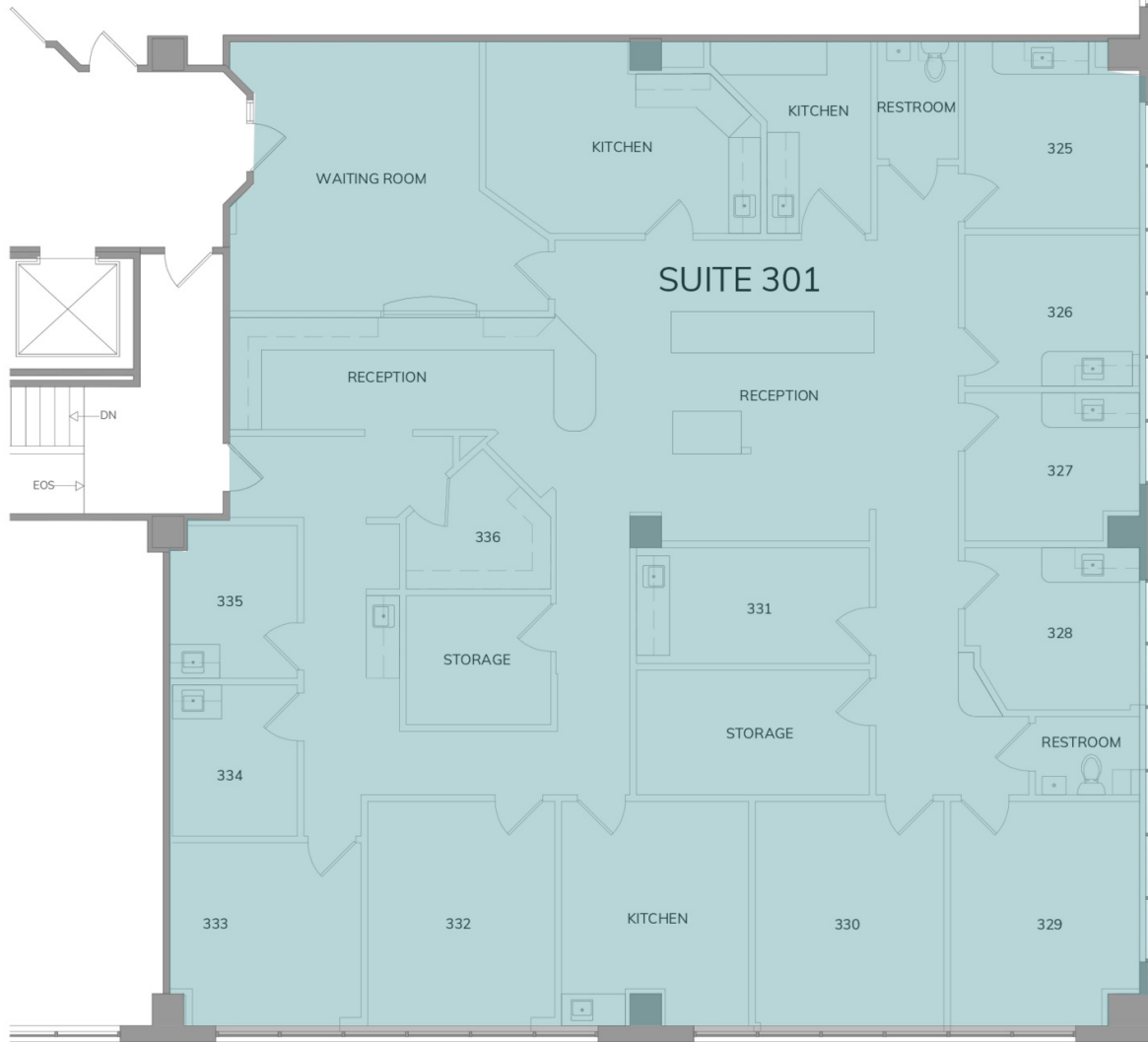
Lincoln

DALLAS MEDICAL CENTER PLAZA IV

9 Medical Parkway | Farmers Branch, TX 75234

Suite 301 - 4,630 RSF

4,630 SF



| Suite | Size |
|-------------|----------|
| ■ Suite 301 | 4,630 SF |

Elizabeth Madden **Zoë Mysing** **Douglas Maclay**
 214.461.2366 504.982.5799 214.461.2371
 emadden@lpc.com zmysing@lpc.com dmaclay@lpc.com

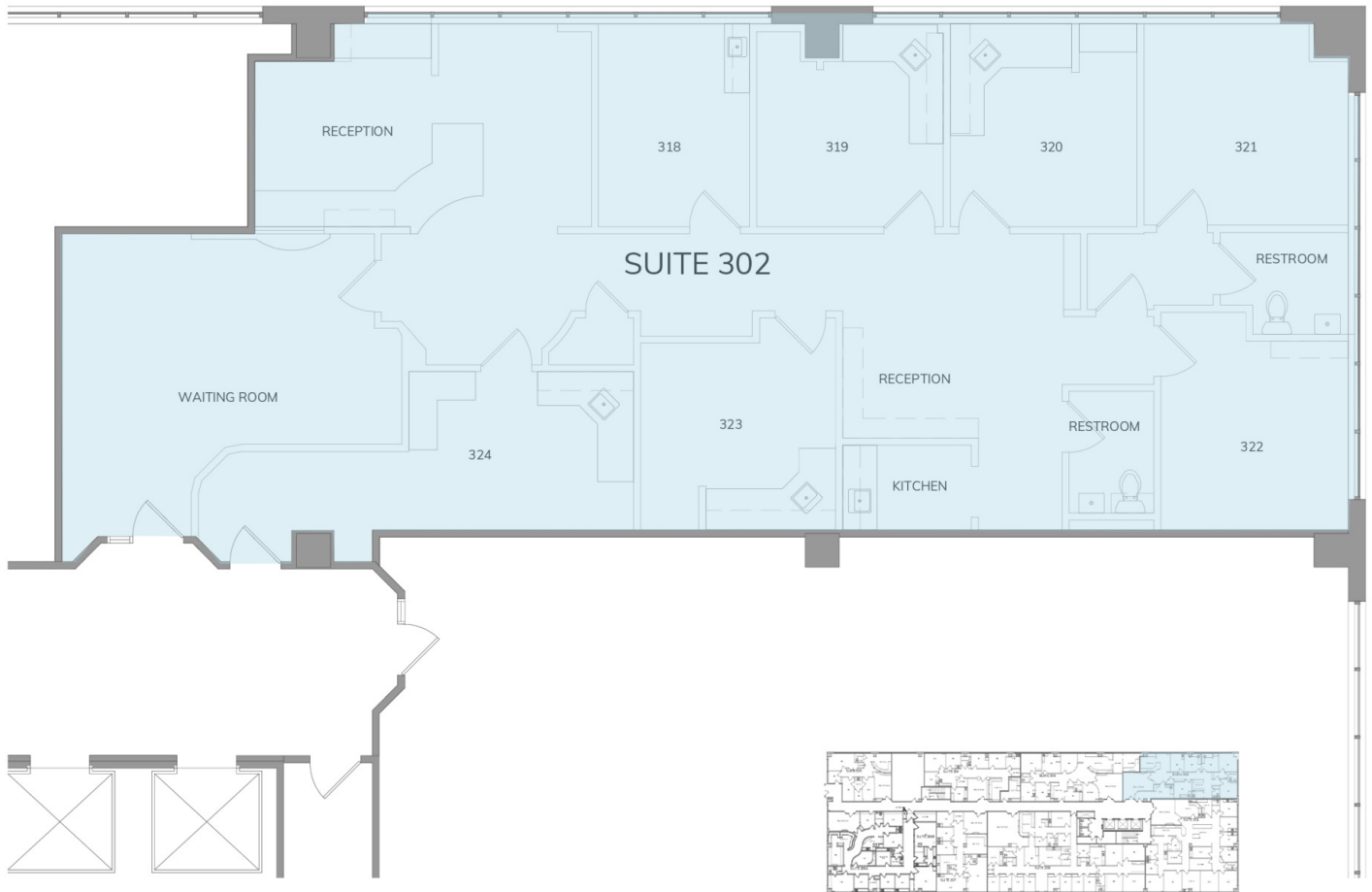
Lincoln

DALLAS MEDICAL CENTER PLAZA IV

9 Medical Parkway | Farmers Branch, TX 75234

Suite 302 - 2,748 RSF

2,748 SF



Suite

■ Suite 302

Size

2,748 SF

Elizabeth Madden **Zoë Mysing** **Douglas Maclay**
214.461.2366 504.982.5799 214.461.2371
emadden@lpc.com zmysing@lpc.com dmaclay@lpc.com

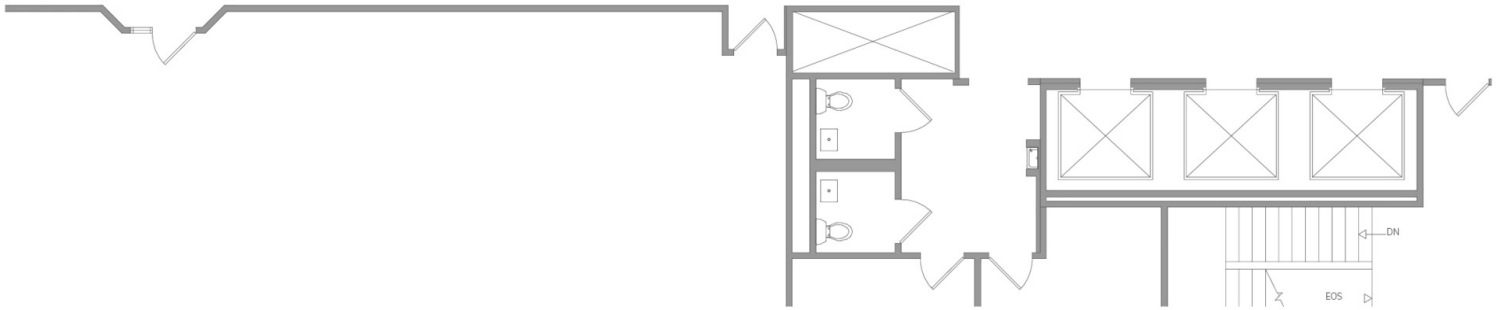
Lincoln

DALLAS MEDICAL CENTER PLAZA IV

9 Medical Parkway | Farmers Branch, TX 75234

Suite 303 - 3,096 RSF

3,096 SF



| Suite | Size | Description |
|-------------|----------|--|
| ■ Suite 303 | 3,096 SF | Non-ADA, would need to be taken as is, or cosmetic updates |

Elizabeth Madden **Zoë Mysing** **Douglas Maclay**
 214.461.2366 504.982.5799 214.461.2371
 emadden@lpc.com zmysing@lpc.com dmaclay@lpc.com

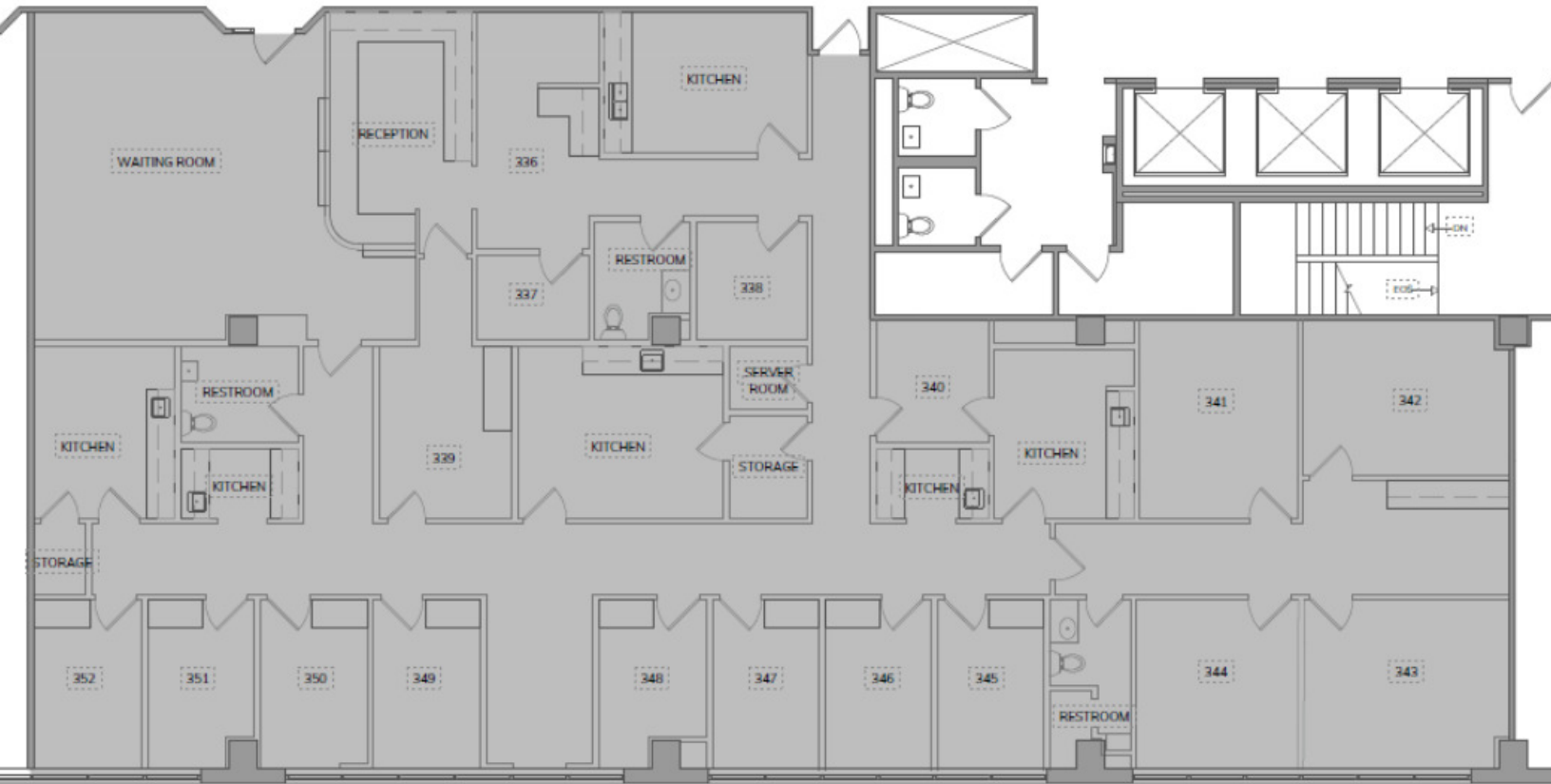
Lincoln

DALLAS MEDICAL CENTER PLAZA IV

9 Medical Parkway | Farmers Branch, TX 75234

Suite 304

5,841 SF



Suite

Suite 304

Size

5,841 SF

Elizabeth Madden

214.461.2366
emadden@lpc.com

Zoë Mysing

504.982.5799
zmysing@lpc.com

Douglas Maclay

214.461.2371
dmaclay@lpc.com

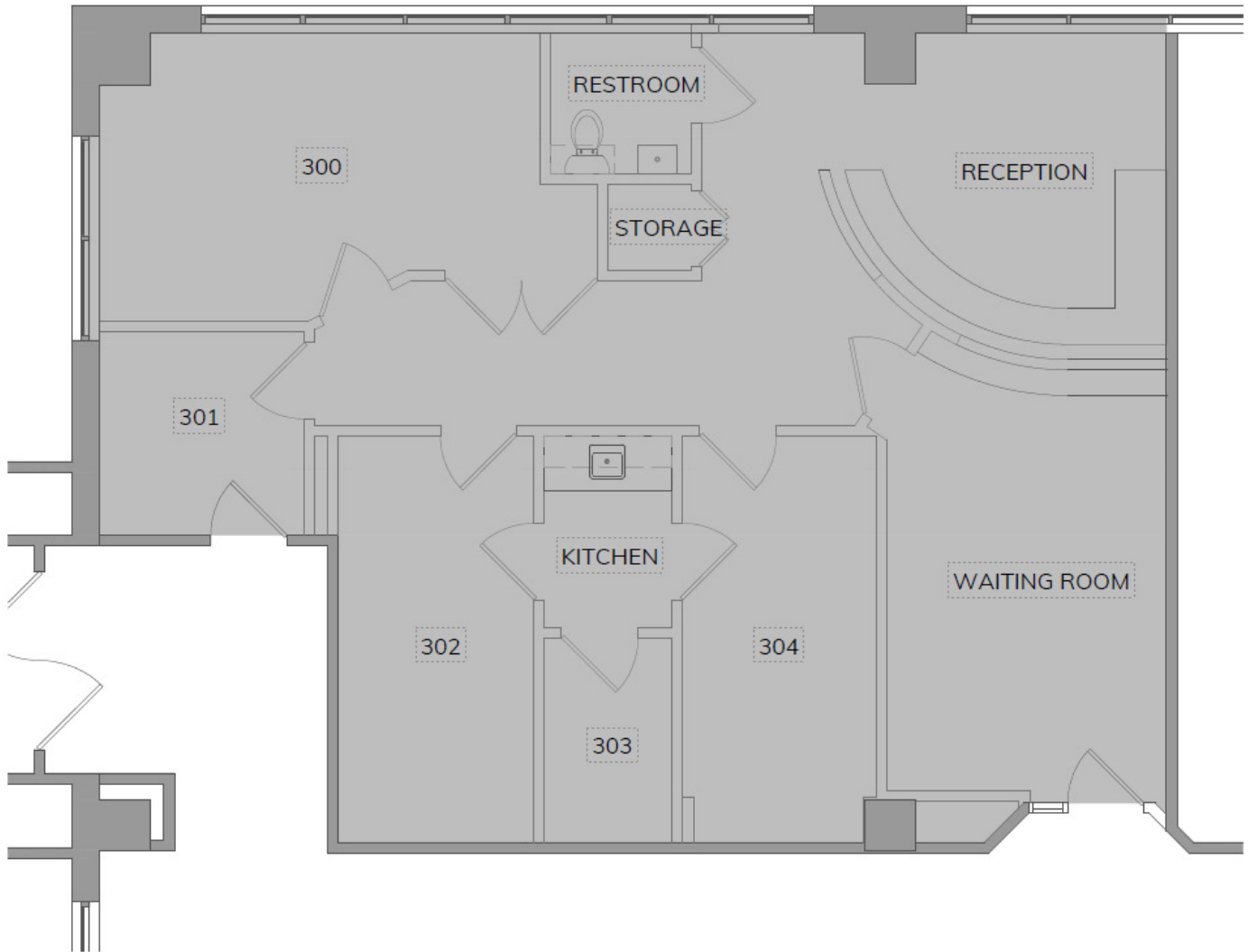
Lincoln

DALLAS MEDICAL CENTER PLAZA IV

9 Medical Parkway | Farmers Branch, TX 75234

Suite 305

1,546 SF



Suite

Suite 305

Size

1,546 SF

Elizabeth Madden

214.461.2366
emadden@lpc.com

Zoë Mysing

504.982.5799
zmysing@lpc.com

Douglas Maclay

214.461.2371
dmaclay@lpc.com

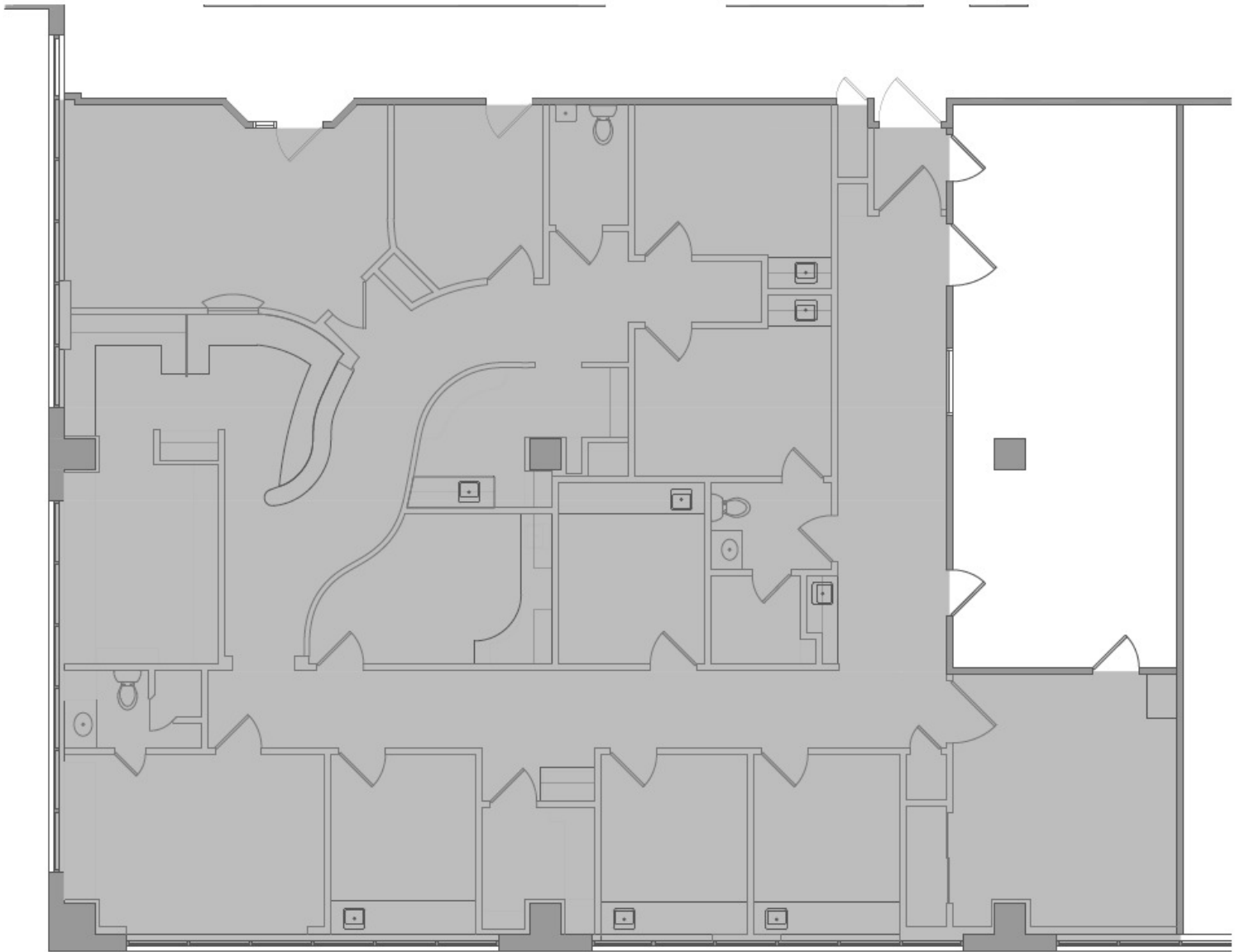
Lincoln

DALLAS MEDICAL CENTER PLAZA IV

9 Medical Parkway | Farmers Branch, TX 75234

Suite 306

4,888 SF



Suite

Suite 306

Size

4,888 SF

Elizabeth Madden

214.461.2366
emadden@lpc.com

Zoë Mysing

504.982.5799
zmysing@lpc.com

Douglas Maclay

214.461.2371
dmaclay@lpc.com

Lincoln

DALLAS MEDICAL CENTER PLAZA IV

9 Medical Parkway | Farmers Branch, TX 75234

Suite 307

2,291 SF



| Suite | Size |
|-----------|----------|
| Suite 307 | 2,291 SF |

Elizabeth Madden

214.461.2366
emadden@lpc.com

Zoë Mysing

504.982.5799
zmysing@lpc.com

Douglas Maclay

214.461.2371
dmaclay@lpc.com

Lincoln

DALLAS MEDICAL CENTER PLAZA IV

9 Medical Parkway | Farmers Branch, TX 75234

Suite 308

2,355 SF



Suite

Suite 308

Size

2,355 SF

Elizabeth Madden

214.461.2366
emadden@lpc.com

Zoë Mysing

504.982.5799
zmysing@lpc.com

Douglas Maclay

214.461.2371
dmaclay@lpc.com

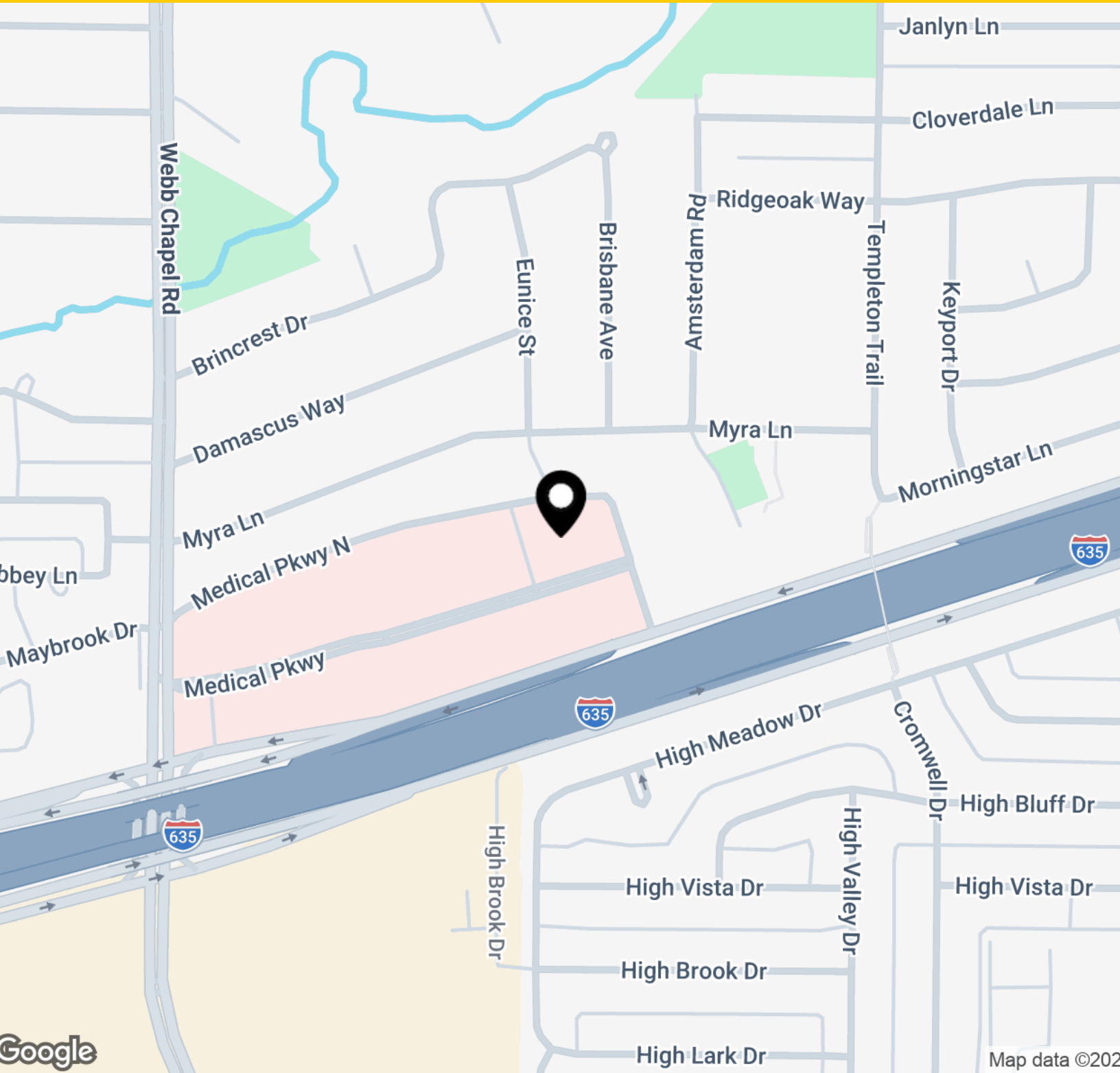
Lincoln

DALLAS MEDICAL CENTER PLAZA IV

9 Medical Parkway | Farmers Branch, TX 75234

Location Map

1,546 - 5,841 SF



Elizabeth Madden

214.461.2366
emadden@lpc.com

Zoë Mysing

504.982.5799
zmysing@lpc.com

Douglas Maclay

214.461.2371
dmaclay@lpc.com

Lincoln



DALLAS MEDICAL CENTER PLAZA IV

9 Medical Parkway
Farmers Branch, TX 75234

Leasing Information:
214.461.2300

Elizabeth Madden
214.461.2366
emadden@lpc.com

Zoë Mysing
504.982.5799
zmysing@lpc.com

Douglas Maclay
214.461.2371
dmaclay@lpc.com

Lincoln

8140 Walnut Hill Lane
Suite 700
Dallas, TX 75231

www.lpc.com