

# FOR SALE

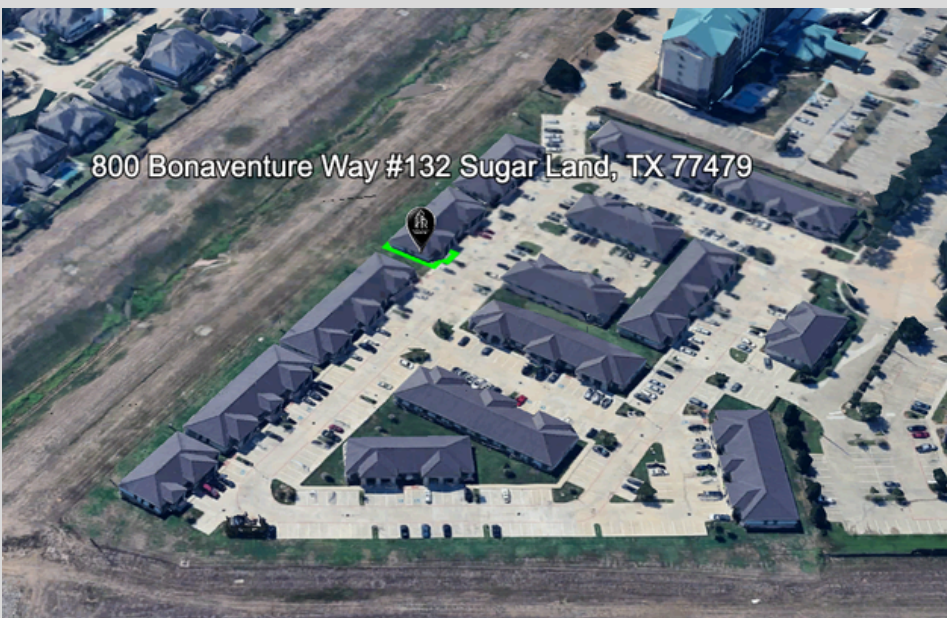
800 BONAVENTURE WAY  
#132 SUGAR LAND, TX 77479

## FEATURES

- 1,248 SF OFFICE CONDO
- END-CAP CORNER SUITE
- HIGH END FINISHES
- 2020 BUILD
- GREAT ACCESS TO HWY 6, US-90, I-69, GRAND PARKWAY, BELTWAY 8, AND WESTPARK TOLLWAY.



PLANNED ROOTS COMMERCIAL



## CONTACT BROKER FOR PRICING

**Alex Fatany**  
(832) 377-9585  
Alex@plannedroots.com

**Moose Fatany**  
(281) 380-1778  
Moose@plannedroots.com

