

AVAILABLE FOR SALE

182 & 192 RACEWAY DRIVE MOORESVILLE, NC

Colliers

53,616 SF AVAILABLE



BUILDING 1 - 182 RACEWAY DR

Parcel ID: 4647443198

Zoning: HLI (Hybrid Light Industrial)

County: Iredell County

Building Size (SF): ±34,304 SF

Warehouse Area: ±12,000 SF

Shop Area: ±4,950 SF

HVAC: 100% Heated and Cooled

Office Areas:
First Floor: ± 9,891 SF
Second Floor: ± 7,463 SF

Drive-In Doors: (2) 14' x 14'

Clear Height: 18'

Auto Parking: ± 36 spaces

Electrical: 500kVA transformer providing service to both buildings

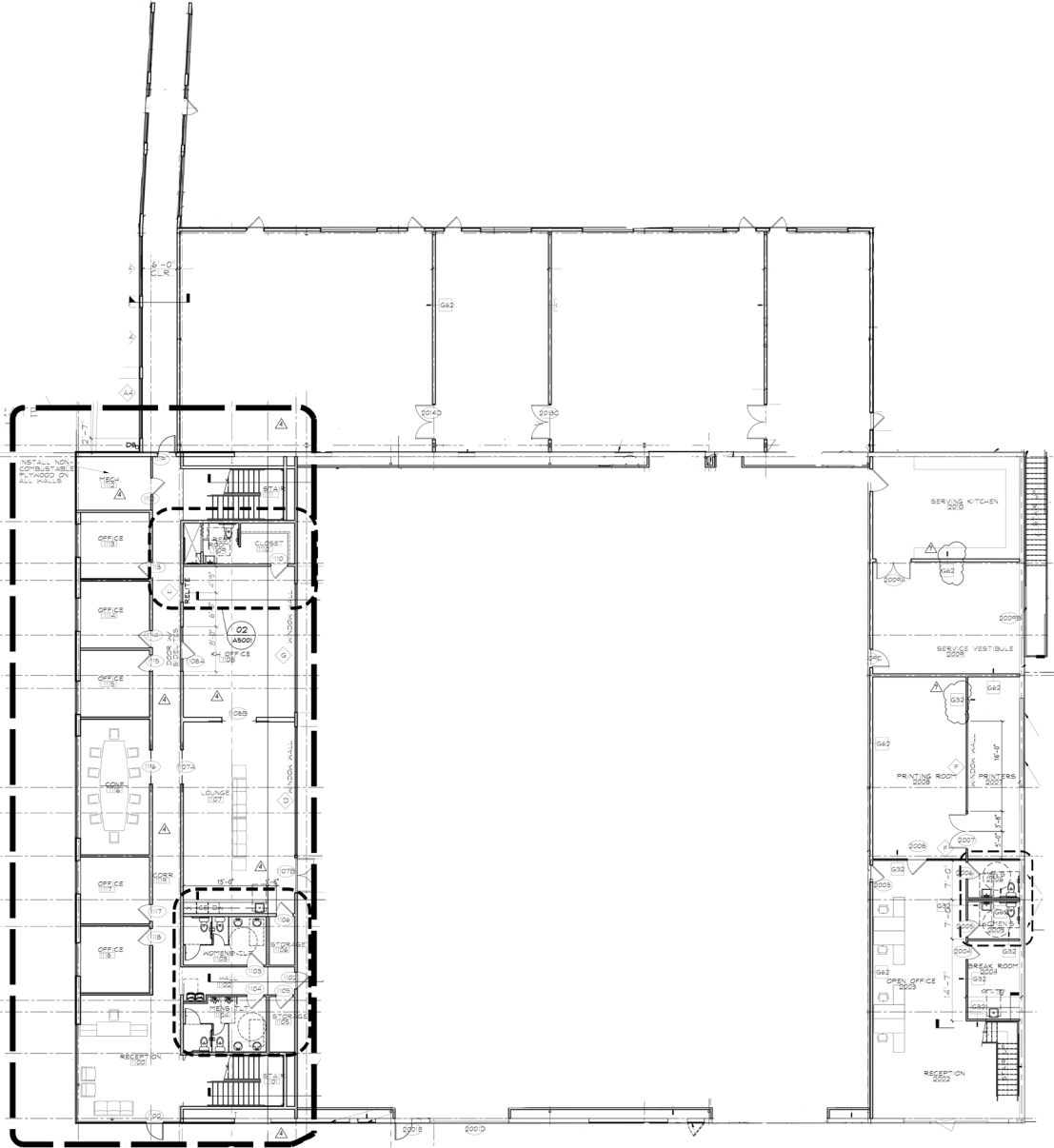
Sprinklers: Wet System

Year Built: 2000/2017

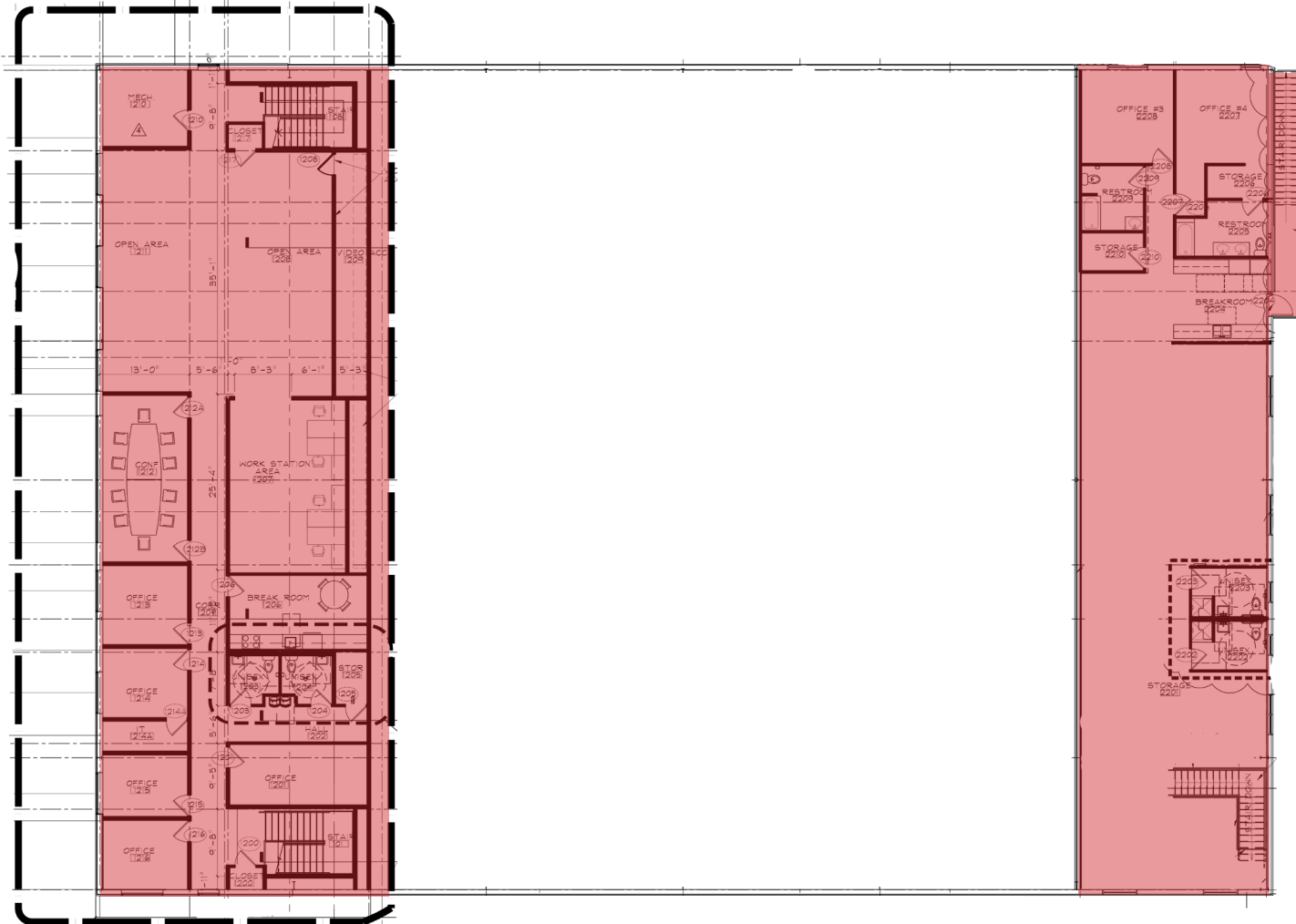
Date Available: Immediately



BUILDING 1 - FIRST FLOOR



BUILDING 1 - SECOND FLOOR



BUILDING 2 - 192 RACEWAY DR

Parcel ID: 4647443198

Zoning: HLI (Hybrid Light Industrial)

County: Iredell County

Building Size (SF): ±19,312 SF

Warehouse Area: ±6,085 SF

Parts/Storage: ±3,638 SF est.

Office Area: ±5,669 SF est.

Mezzanine: ±3,920

Dock High Doors: (1) 10' x 12'

Drive-In Doors: (1) 14'5" x 16'

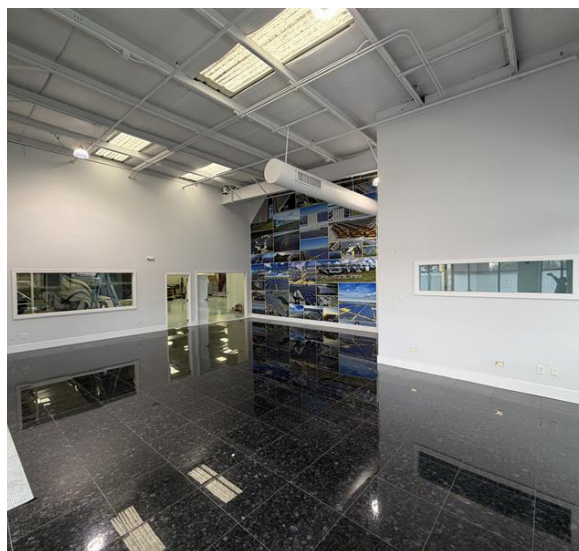
Clear Height: 15'4" - 17'1"

Auto Parking: ± 21 spaces

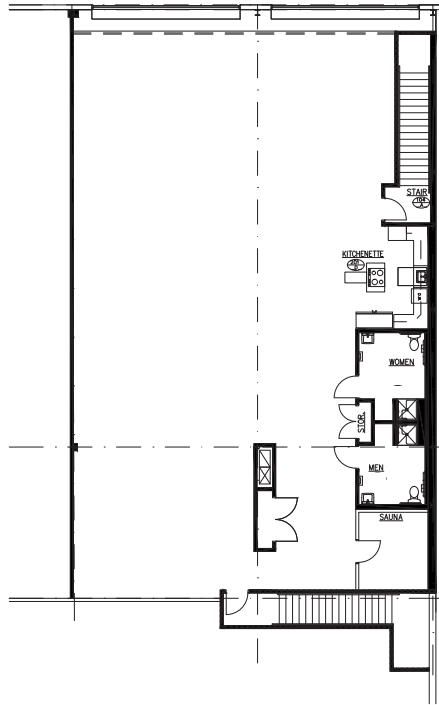
Sprinklers: Wet System

Year Built: 2000/2014

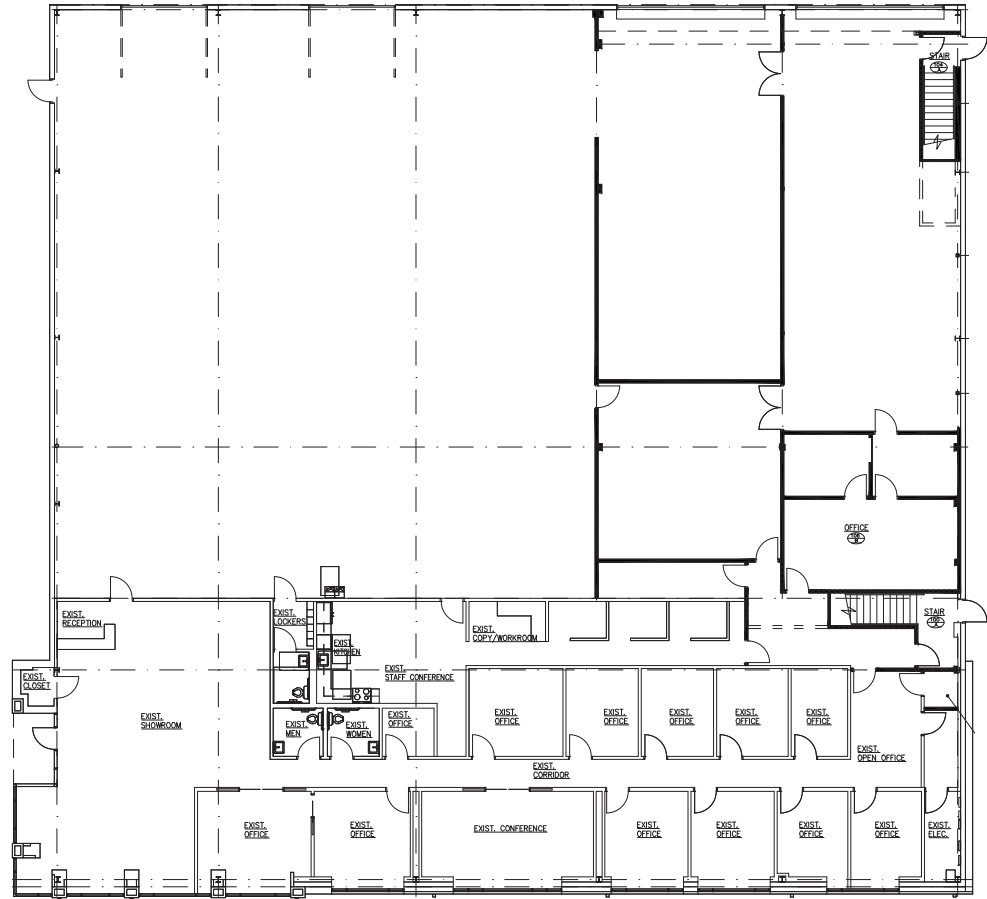
Date Available: Immediately



BUILDING 2



Mezzanine



First Floor

LOCATION AERIAL



MOORESVILLE OVERVIEW



DEMOGRAPHICS:

	10 Miles	20 Miles	30 Miles
Population	200,442	769,236	1,869,318
'25 - '30 Population Change	7.3%	7.0%	6.7%
Total Labor Force	104,561	400,810	971,199
Median Household Income	\$113,011	\$92,041	\$80,402

ADVANTAGES

40 Minutes to Charlotte Douglas International Airport

Proximity to **72% of US Population**
Within 2-day Trucking Time

Iredell County Ranks 6th
in North Carolina In GDP - \$9.5BM

#4 Fastest County Growth
in Population in Charlotte Region
(CBJ - March 2024)

#6 Fastest County Growth
in Population in North Carolina
(NC Department of Commerce, 2024)

REGIONAL DISTANCES



1.2 Miles



Statesville Regional
Airport:
25 Minutes



16.1 Miles



Charlotte Douglas Int'l
Airport:
40 Minutes



18.4 Miles

CONTACT US

John Ellis
Senior Associate
704 619 7181
john.ellis@colliers.com

Tim Roach
Associate
303 929 4294
john.ellis@colliers.com

Grant Miller, SIOR
Vice Chair
704 409 2364
grant.miller@colliers.com



Copyright © 2026 Colliers
The information contained herein has been obtained from sources deemed reliable. While every reasonable effort has been made to ensure its accuracy, we cannot guarantee it. No responsibility is assumed for any inaccuracies. Readers are encouraged to consult their professional advisors prior to acting on any of the material contained in this report.