

FOR LEASE

Paseo District



For More Information:

Corey Hale
Sales Associate

405.365.6990

Corey.hale@skybridgellc.com

2927 Paseo Oklahoma City, OK 73103.

Available for lease. Located in the heart of the historic Paseo District. This prestigious architectural building is the perfect fit for an art gallery, retail, office, or restaurant.

**\$21.00 sq ft.
Modified Gross Lease**

- **Landlord Responsibilities:** Property Taxes, building insurance, roof & building structure.
- **Landlord updates include:** New HVAC units, electrical, TPO sectioned roof, exterior concrete behind the building, parking lot drainage.
- **Professional Property Management.**
- **Great access and traffic count.**



SKYBRIDGE
REAL ESTATE

FOR LEASE

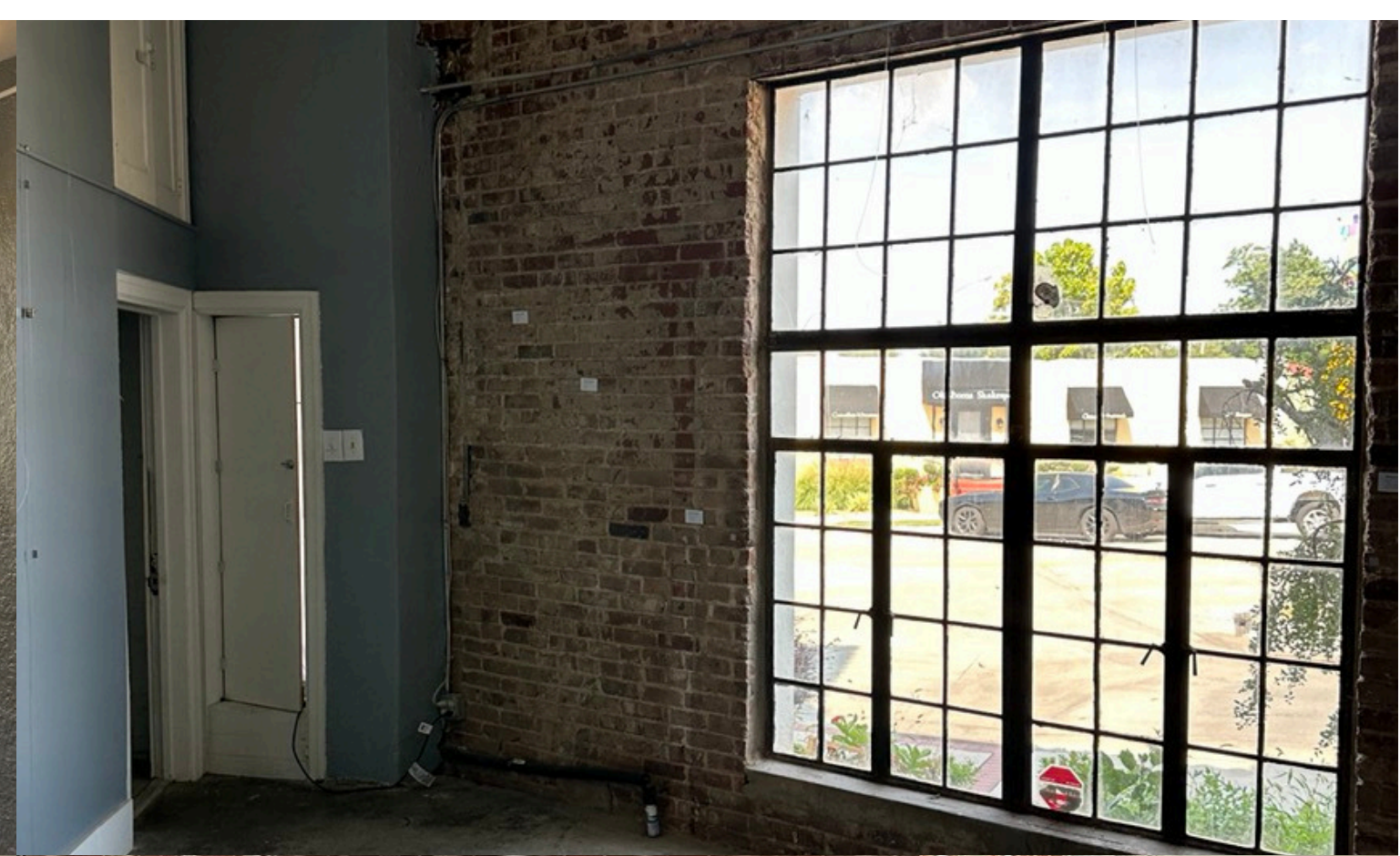
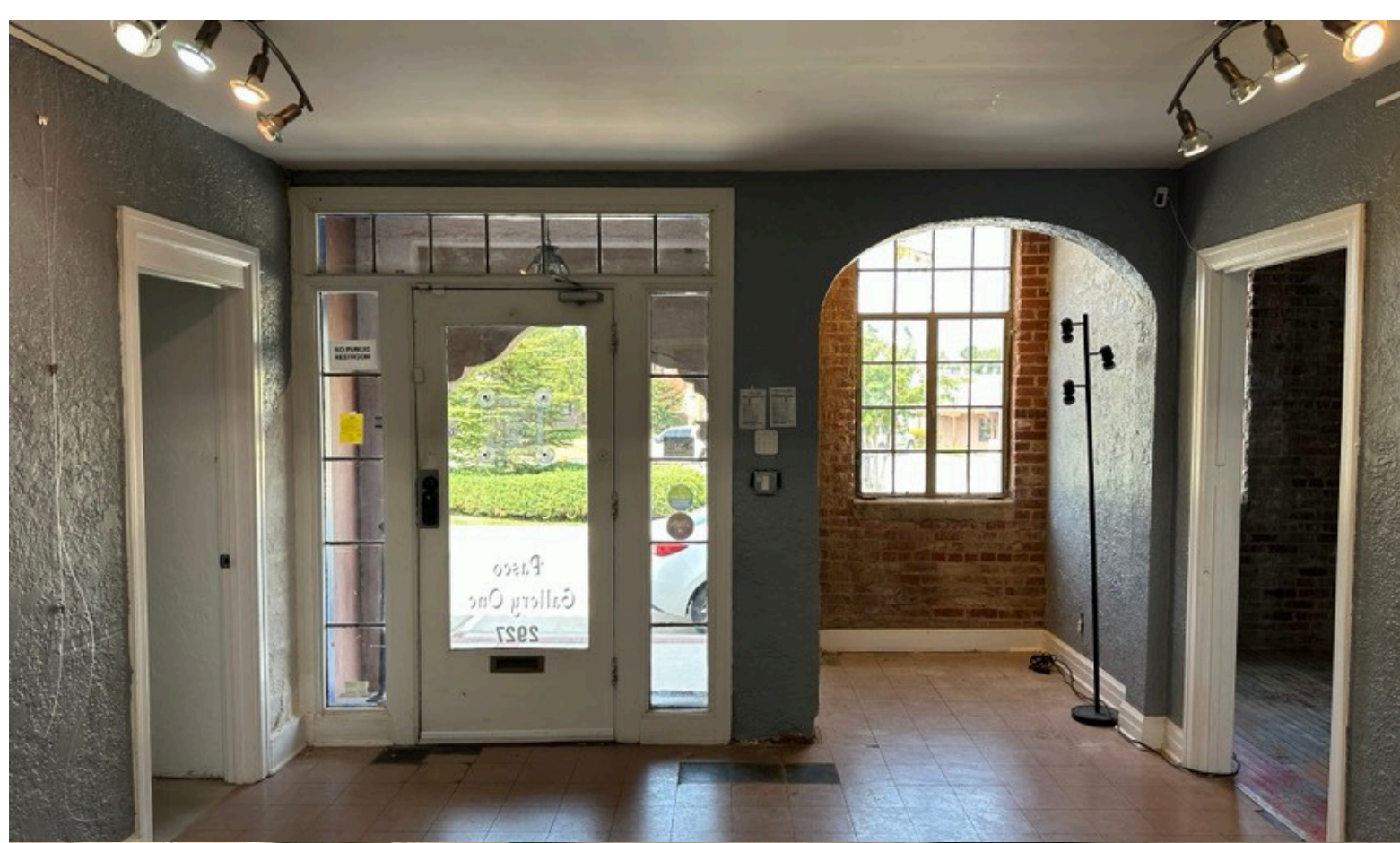
Paseo District



For More Information:

Corey Hale
Sales Associate
405.365.6990

Corey.hale@skybridgellc.com



SKYBRIDGE
REAL ESTATE

FOR LEASE

Paseo District



For More Information:

Corey Hale
Sales Associate
405.365.6990

Corey.hale@skybridgellc.com



SKYBRIDGE
REAL ESTATE