



**FOR SUBLEASE – 22,061 SF AVAILABLE**

# **TIMBER RIDGE MEDICAL CENTER**

**4645 Timber Ridge Drive, Suite 200, Douglasville, GA 30135**



# TIMBER RIDGE MEDICAL CENTER

4645 TIMBER RIDGE DRIVE, SUITE 200, DOUGLASVILLE, GA 30135

## PROPERTY HIGHLIGHTS

**APRIL 30, 2027**

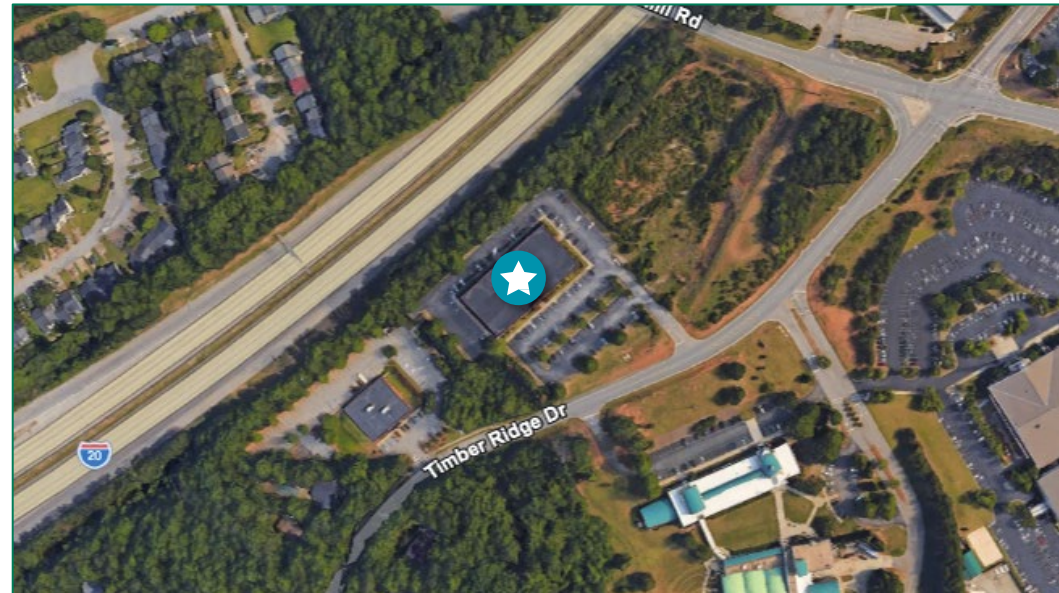
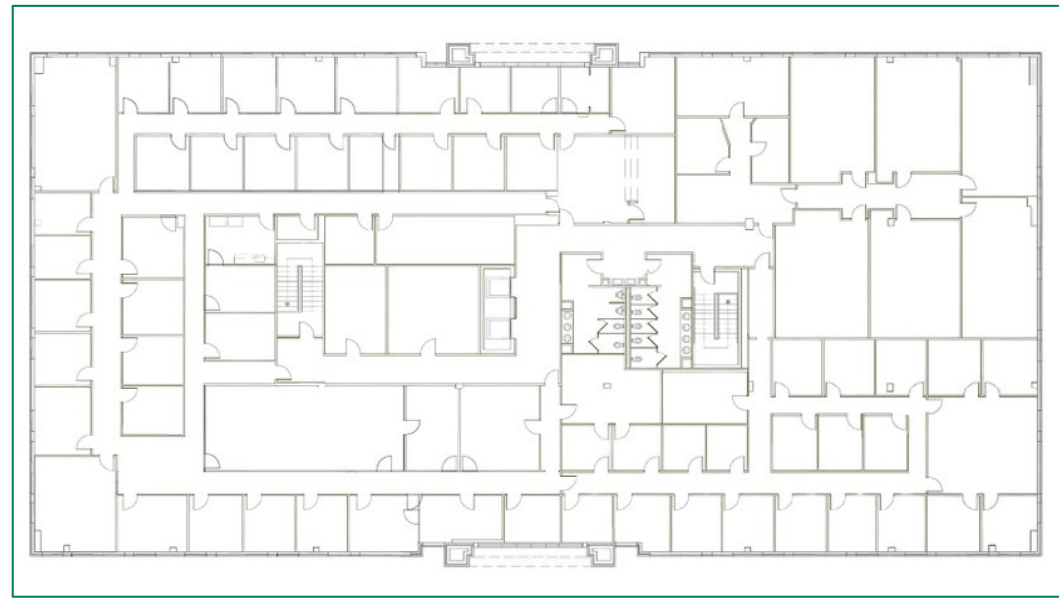
Sublease Expiration

**44,518 SF**

Building Total

**22,061 SF**

Available SF



**FOR MORE INFORMATION, CONTACT:**

**ADAM THOMAS, CCIM, SIOR**

Senior Director

+1 404 853 5318

[adam.thomas@cushwake.com](mailto:adam.thomas@cushwake.com)

©2026 Cushman & Wakefield. All rights reserved. The information contained in this communication is strictly confidential. This information has been obtained from sources believed to be reliable but has not been verified. NO WARRANTY OR REPRESENTATION, EXPRESS OR IMPLIED, IS MADE AS TO THE CONDITION OF THE PROPERTY (OR PROPERTIES) REFERENCED HEREIN OR AS TO THE ACCURACY OR COMPLETENESS OF THE INFORMATION CONTAINED HEREIN, AND SAME IS SUBMITTED SUBJECT TO ERRORS, OMISSIONS, CHANGE OF PRICE, RENTAL OR OTHER CONDITIONS, WITHDRAWAL WITHOUT NOTICE, AND TO ANY SPECIAL LISTING CONDITIONS IMPOSED BY THE PROPERTY OWNER(S). ANY PROJECTIONS, OPINIONS OR ESTIMATES ARE SUBJECT TO UNCERTAINTY AND DO NOT SIGNIFY CURRENT OR FUTURE PROPERTY PERFORMANCE. PD-215950-V1