

**CURVE DATA # R I A T CWD**

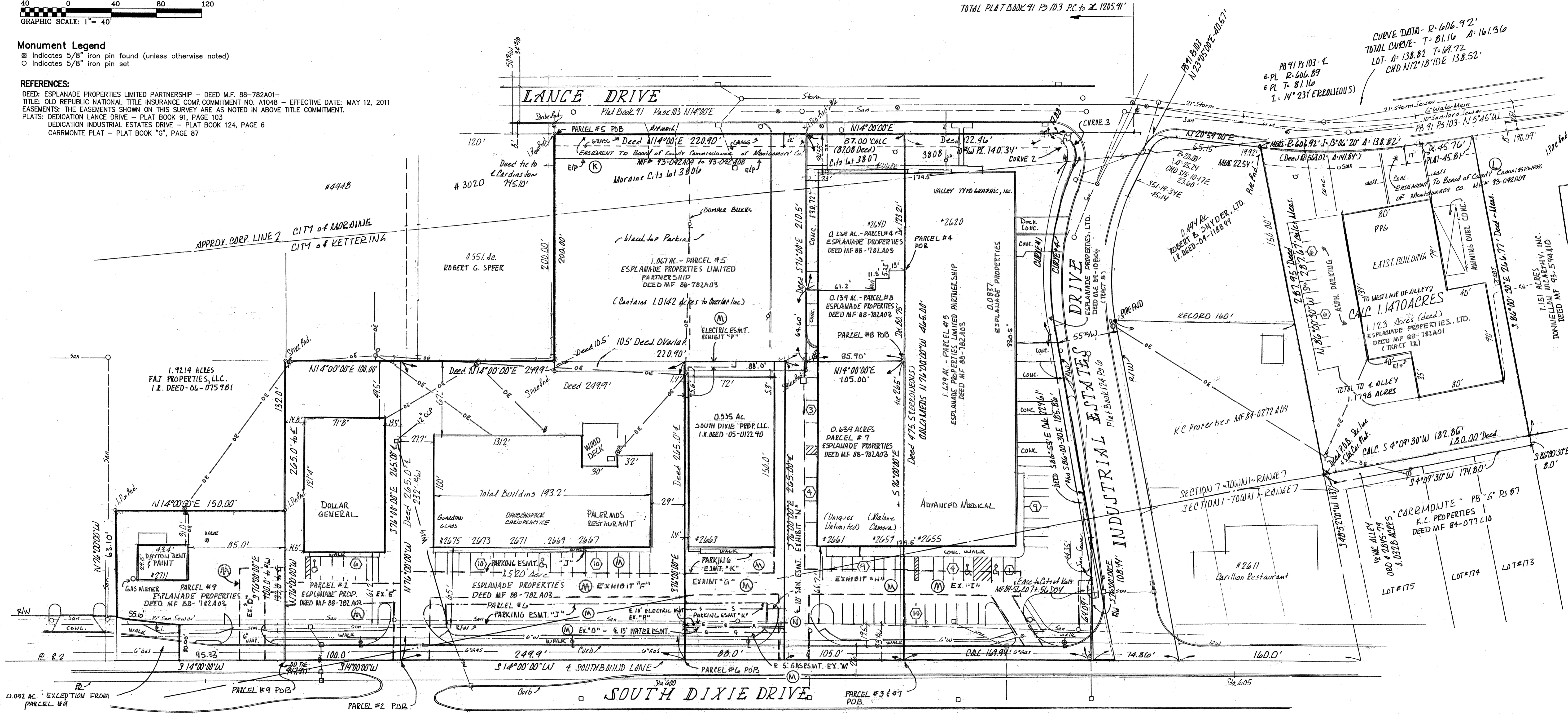
- 1 239.71 34°34' 198.86' 7.71' N67°58'33"W 142.67'
- 2 27.37 115°21'44" 55.11 43.26' S77°41'00"W 46.26'
- 3 20.00 116°19'04" 40.00 32.20' N72°10'28"E 33.98'
- 4 234.31 36°20'30" 148.62 78.90' S67°50'15"E 146.14'

**Monument Legend**

- ⊗ Indicates 5/8" iron pin found (unless otherwise noted)
- Indicates 5/8" iron pin set

**REFERENCES:**

DEED: ESPLANADE PROPERTIES LIMITED PARTNERSHIP - DEED M.F. 88-782A01-  
TITLE: OLD REPUBLIC NATIONAL TITLE INSURANCE COMP. COMMITMENT NO. A1048 - EFFECTIVE DATE: MAY 12, 2011  
EASEMENTS: THE EASEMENTS SHOWN ON THIS SURVEY ARE AS NOTED IN ABOVE TITLE COMMITMENT.  
PLATS: DEDICATION LANCE DRIVE - PLAT BOOK 91, PAGE 103  
DEDICATION INDUSTRIAL ESTATES DRIVE - PLAT BOOK 124, PAGE 6  
CARRMONTE PLAT - PLAT BOOK "G", PAGE 87



KNOWN EXISTING UNDERGROUND UTILITIES AND SERVICES ARE SHOWN IN THEIR APPROXIMATE LOCATIONS ACCORDING TO THE BEST AVAILABLE DATA. THE LOCATIONS SHOWN ARE TO SERVE AS A GUIDE FOR ALL PARTIES CONCERNED. THE CONTRACTOR AND RESPECTIVE UTILITY OWNERS WILL BE RESPONSIBLE FOR VERIFYING THEIR LOCATION IN THE FIELD PRIOR TO CONSTRUCTION, FOR PROTECTING ANY UTILITY WHICH MAY INTERFERE WITH CONSTRUCTION, AND FOR ANY DAMAGE TO SUCH EXISTING UTILITY.



**LEGEND**

○ Storm. M.H.	— GAS — Gas Line
□ 2'x2' C.B.	— OE — Overhead Electric
⊞ CATV - Cable TV Box	— UE — Underground Electric
⊞ Telephone Box	— SAN — Sanitary Sewer
⊞ Electric Transformer	— SIM — Storm Sewer
⊞ Fire Hydrant	— W — Water Main
⊞ Water Valve	— G — Gas Easement
⊞ Gas Valve	— E — Electric Easement
⊞ Light Pole	— S — Sanitary Easement
⊞ Power Pole	⊞ Regular Parking Spaces
⊞ Sanitary Manhole	
⊞ Sanitary Cleanout	
⊞ Sign Post	

"ALTA/ACSM  
LAND TITLE SURVEY"  
**ESPLANADE PROPERTIES  
LIMITED PARTNERSHIP**  
SEC. 1 & 7, TOWN 1, RANGE 7  
CITY OF MORAINÉ & CITY OF KETTERING  
MONTGOMERY COUNTY, OHIO