



INDUSTRIAL FOR SALE | ±18,500 SF

3721 Goodell Road

Richmond, Virginia 23223



THALHIMER

3721 GOODELL ROAD

RICHMOND, VA 23223

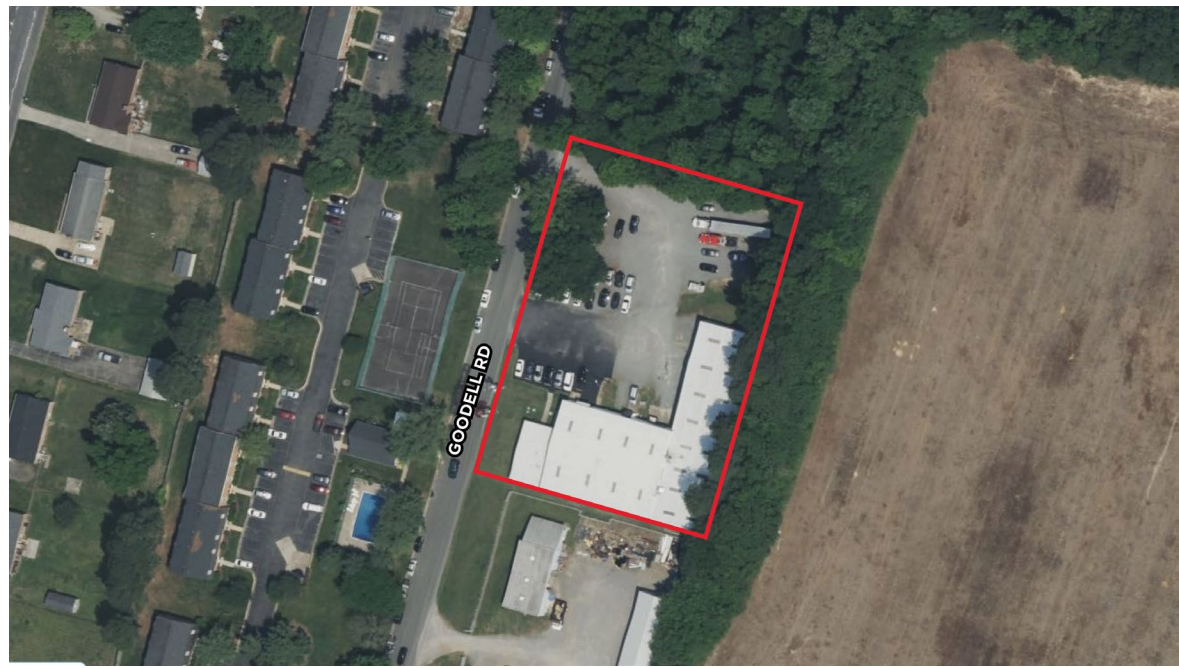
Property Features

- ±18,500 SF industrial warehouse available for sale
- Situated on ±1.41 acres in Richmond's East End industrial corridor
- M-1 Industrial
- Three (3) loading docks and one (1) drive-in door
- 18' clear ceiling height
- ½ warehouse is conditioned
- Ample on-site parking
- Strategic location near Laburnum Avenue, Mechanicsville Turnpike, and I-64
- Convenient access to I-64, I-95 and I-295
- Surrounded by established commercial, industrial and retail users
- Ideal owner-user or investment opportunity



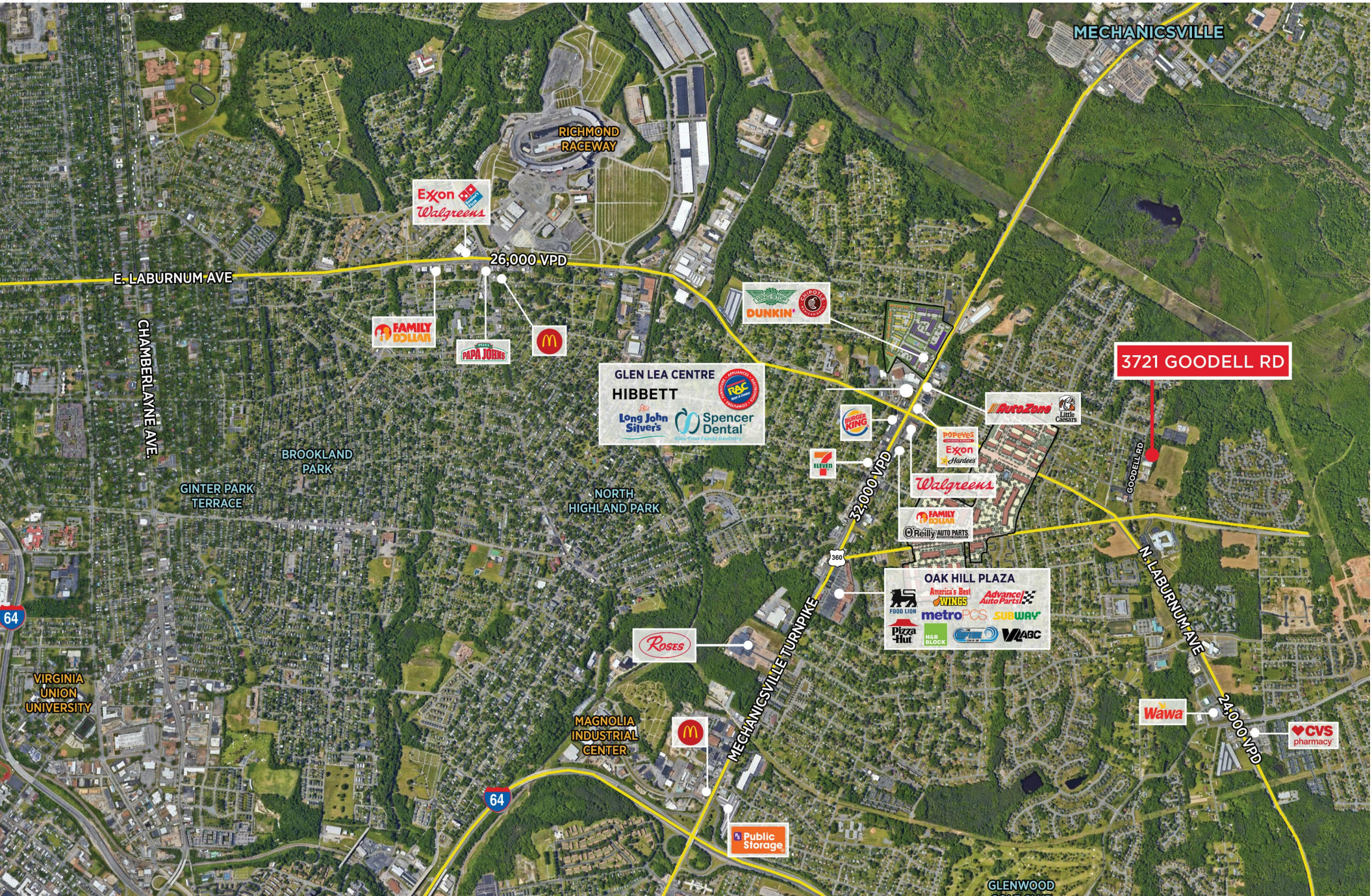
3721 GOODELL ROAD

RICHMOND, VA 23223



3721 GOODELL ROAD

RICHMOND, VA 23223



MECHANICSVILLE

RICHMOND RACEWAY

Exxon
Walgreens

26,000 VPD

E. LABURNUM AVE

FAMILY DOLLAR

PAPA JOHN'S

McDonald's

DUNKIN'

GLEN LEA CENTRE
HIBBETT
Long John Silvers
Spencer Dental

3721 GOODELL RD

AutoZone
Little Caesars

BURGER KING

POPEYES
Exon
Hurricanes

Walgreens

FAMILY DOLLAR
Retilly AUTO PARTS

NORTH
HIGHLAND PARK

7 ELEVEN

360

OAK HILL PLAZA
America's Best WINGS
Advance Auto Parts
metro PCS
SUBWAY
Pizza Hut
HAR BLOCK
WABC

CHAMBERLAINE AVE

BROOKLAND PARK

GINTER PARK TERRACE

N. LABURNUM AVE

Roses

MAGNOLIA INDUSTRIAL CENTER

McDonald's

MECHANICSVILLE TURNPIKE

Wawa

24,000 VPD

CVS pharmacy

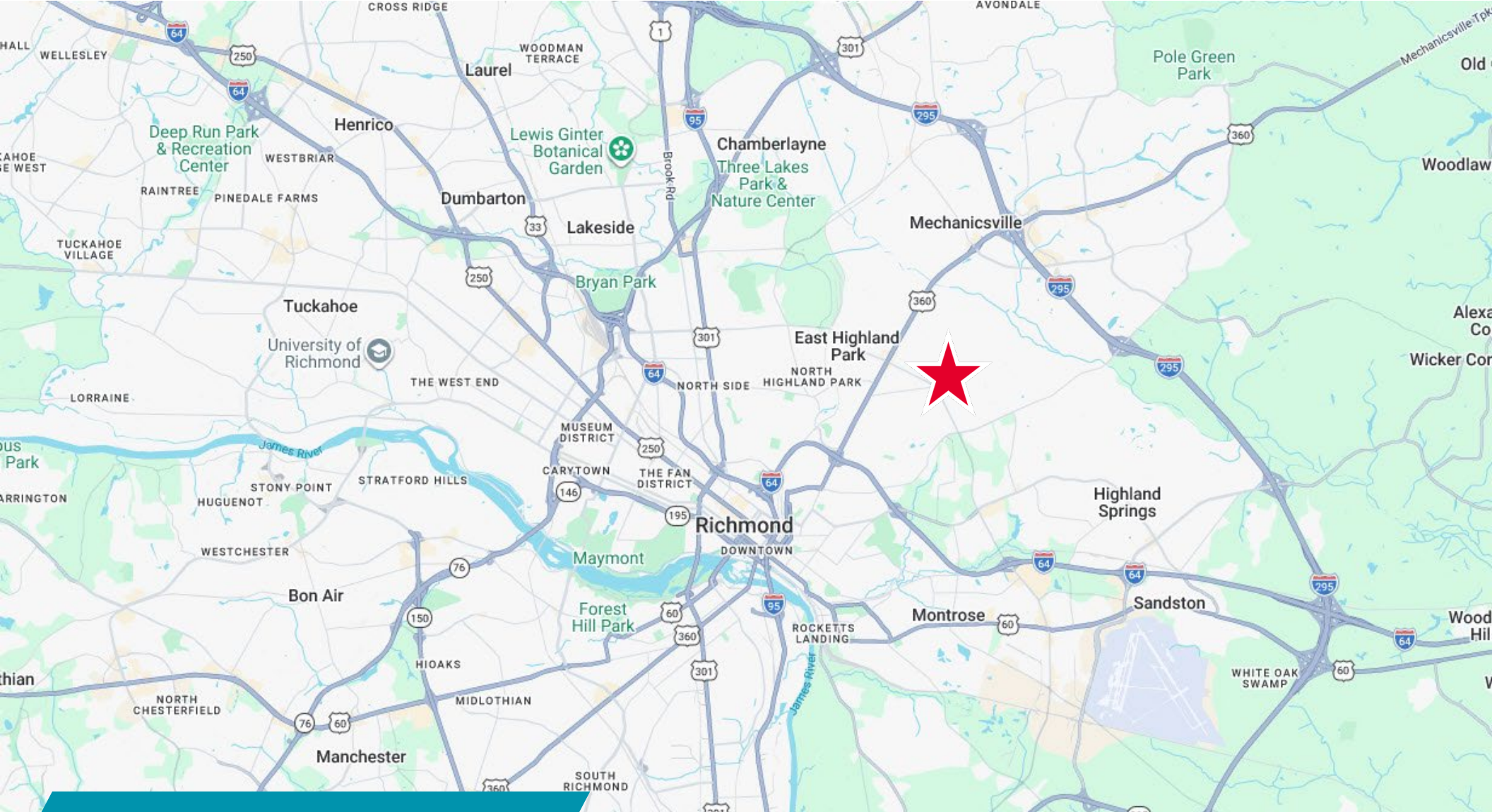
Public Storage

GLENWOOD

VIRGINIA UNION UNIVERSITY

64

64



FOR MORE INFORMATION, CONTACT:

BRIAN FELTON
First Vice President
804 344 7159
rian.felton@thalhimer.com

Thalhimer Center
11100 W. Broad Street
Glen Allen, VA 23060
thalhimer.com

Independently Owned and Operated / A Member of the Cushman & Wakefield Alliance

Cushman & Wakefield | Thalhimer © 2026. No warranty or representation, express or implied, is made to the accuracy or completeness of the information contained herein, and same is submitted subject to errors, omissions, change of price, rental or other conditions, withdrawal without notice, and to any special listing conditions imposed by the property owner(s). As applicable, we make no representation as to the condition of the property (or properties) in question.

