

For Lease

Medical/Office

3,000-10,000 SF



204 E. Prairie Street

Marengo, IL 60152

PROPERTY HIGHLIGHTS

- Building size: 24,571 SF
- Year built: 2007
- **Units 2 & 3:** 2,361-7,000 SF Medical Space
 - Unit 2: 3,200 SF
 - Unit 3: 2,361 SF
- **Unit 4:** 3,000 SF General Office Space
- Zoning: B-1
- Lot Size: 0.88 Acres
- Construction: Masonry
- 0.2 Miles to Rte 20 via S Taylor Street
- **Lease Rate:** \$14.75 PSF Modified Gross



TURNKEY
FINISHES



PARKING RATIO:
3.30/1,000 SF



0.5 MILES TO RTE 176
VIA TAYLOR ST

 VIDEO
TOUR

Contact

Doug Altenberger
+1 630 693 0699
daltenberger@hiffman.com

One Oakbrook Terrace
Suite 400
Oakbrook Terrace, Illinois 60181
+1 630 932 1234

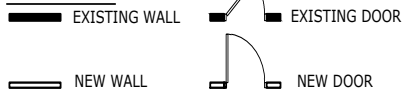
hiffman.com

NO WARRANTY OR REPRESENTATION, EXPRESS OR IMPLIED, IS MADE AS TO THE ACCURACY OF THE INFORMATION CONTAINED HEREIN, AND THE SAME IS SUBMITTED SUBJECT TO ERRORS, OMISSIONS, CHANGE OF PRICE, RENTAL OR OTHER CONDITIONS, PRIOR SALE, LEASE OR FINANCING, OR WITHDRAWAL WITHOUT NOTICE, AND OF ANY SPECIAL LISTING CONDITIONS IMPOSED BY OUR PRINCIPALS NO WARRANTIES OR REPRESENTATIONS ARE MADE AS TO THE CONDITION OF THE PROPERTY OR ANY HAZARDS CONTAINED THEREIN ARE ANY TO BE IMPLIED.

UNIT 2: 3,200 SF MEDICAL EXAM UNIT

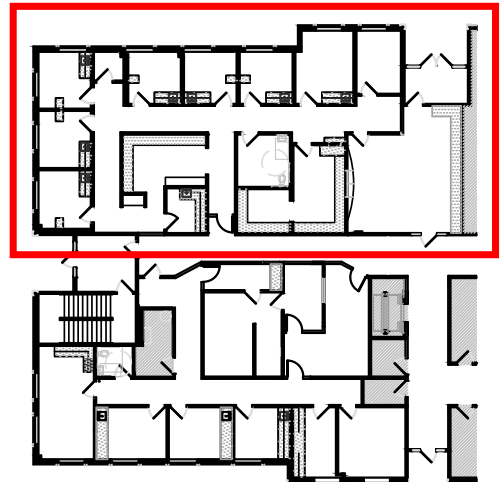


LEGEND



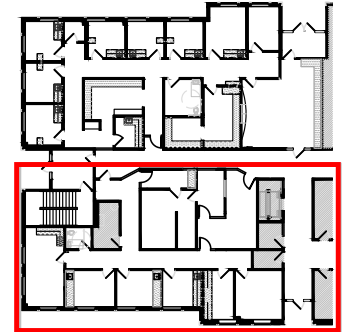
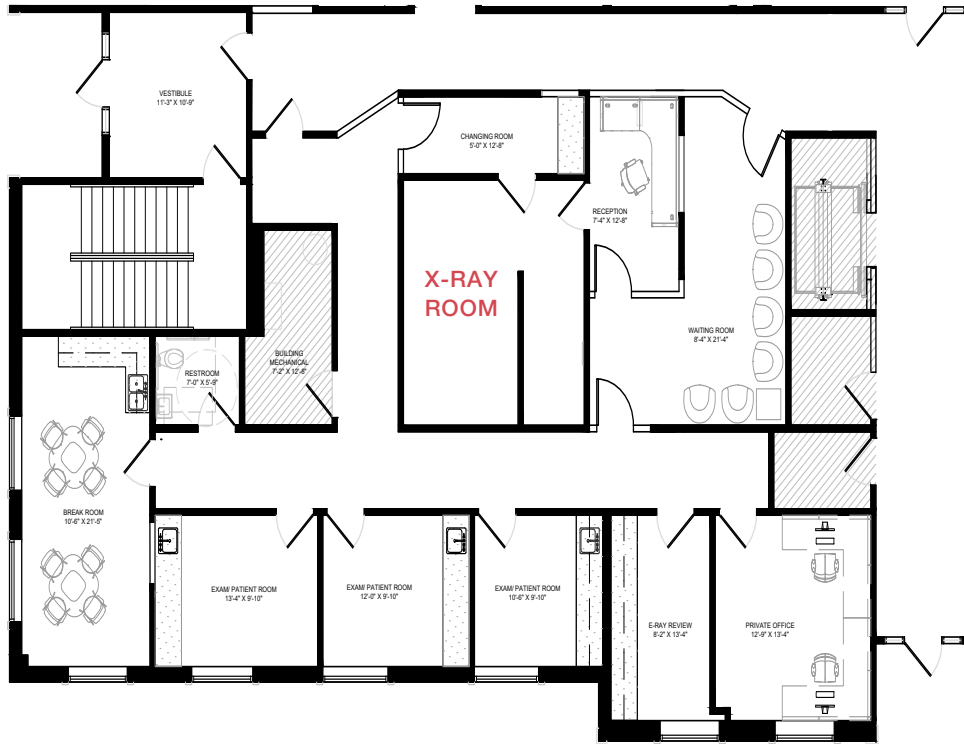
PROGRAM

- (1) WAITING ROOM
- (1) RECEPTION
- (6) EXAM/ PATIENT ROOMS
- (1) PRIVATE OFFICE
- (1) BREAK ROOM
- (1) NURSE'S STATION
- (1) LAB
- (1) ADMIN AREA
- (1) RESTROOM



UNIT 3: 2,361 SF MEDICAL EXAM UNIT

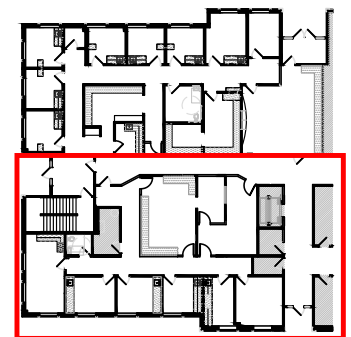
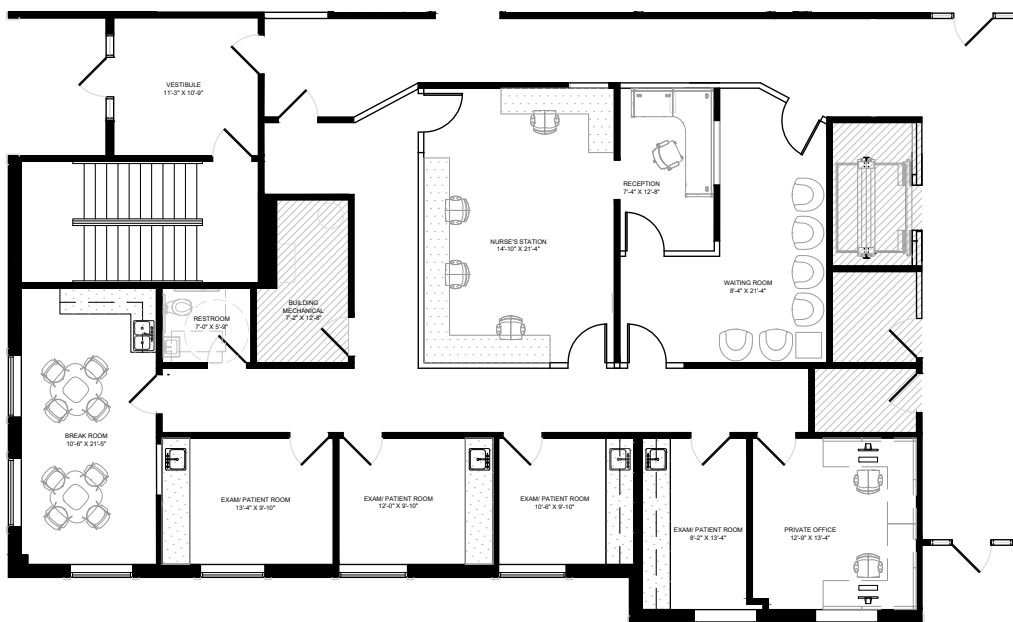
OPTION A



PROGRAM

- (1) WAITING ROOM
- (1) RECEPTION
- (3) EXAM/ PATIENT ROOMS
- (1) PRIVATE OFFICE
- (1) X-RAY ROOM
- (1) X-RAY REVIEW
- (1) BREAK ROOM
- (1) RESTROOM

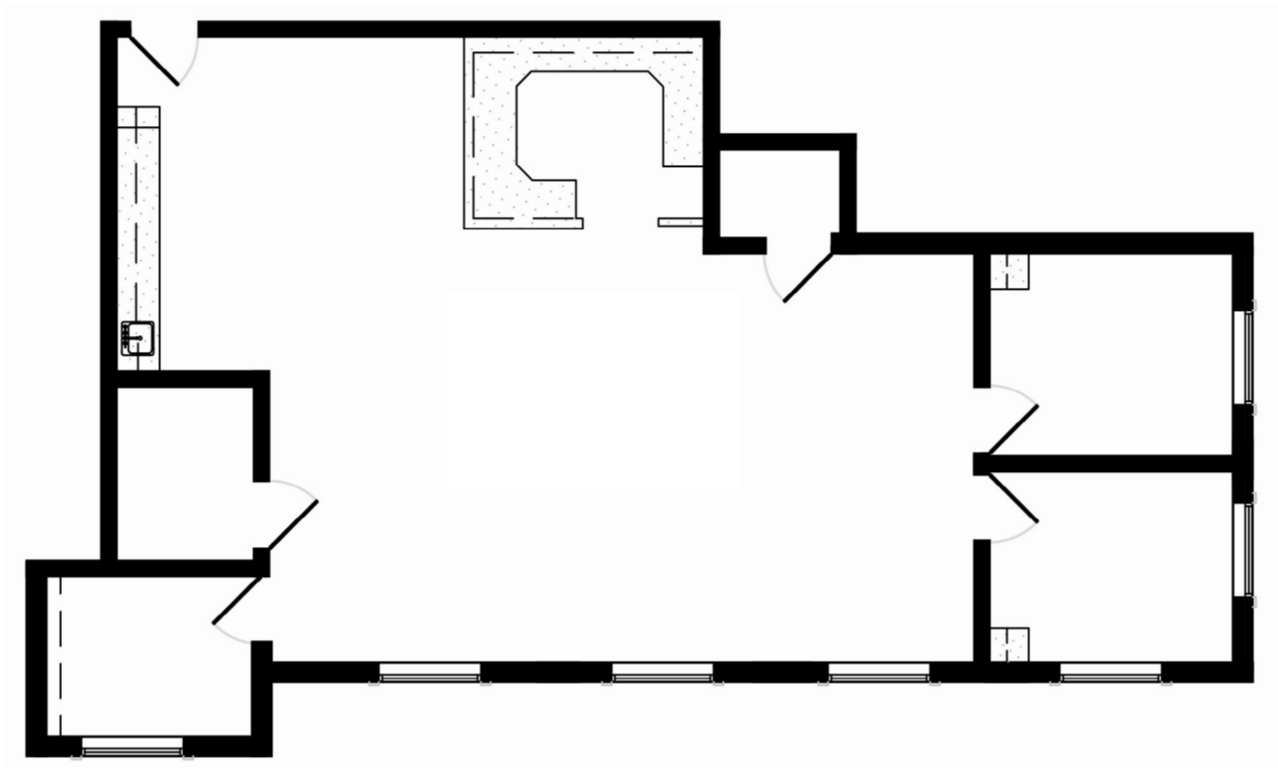
OPTION B



PROGRAM

- (1) WAITING ROOM
- (1) RECEPTION
- (4) EXAM/ PATIENT ROOMS
- (1) PRIVATE OFFICE
- (1) NURSE'S STATION/ ADMIN AREA
- (1) BREAK ROOM
- (1) RESTROOM

UNIT 4: 3,000 SF GENERAL OFFICE



PHOTOS: UNITS 2 & 3



FACILITY HIGHLIGHTS

- Turnkey Finishes
- Admin Office Wing
- Large Waiting Room & 11 Exam Rooms
- 2,361-7,000 SF of Medical Space
- 3,000 SF General Office

