

5124 20th Street

GREELEY, COLORADO 80634

Lease Rate: \$19.00/SF

NNN=\$6.00/SF (estimated)

Rentable Size: 5,100 SF

- New Class "A" Office
- Estimated Completion Fall 2020
- Directly Across from AIMS
- TI Allowance \$50/usable SF
- Zoned Commercial Low Density
- Traffic Count 15,992 vpd
- 12 miles to 
- 2 miles to 



WHEELER
Properties

1130 38th Avenue, Suite B • Greeley, CO 80634
WheelerPropertiesInc.com • 970-352-5860

Information deemed reliable, but not guaranteed. Price, terms and conditions subject to change.



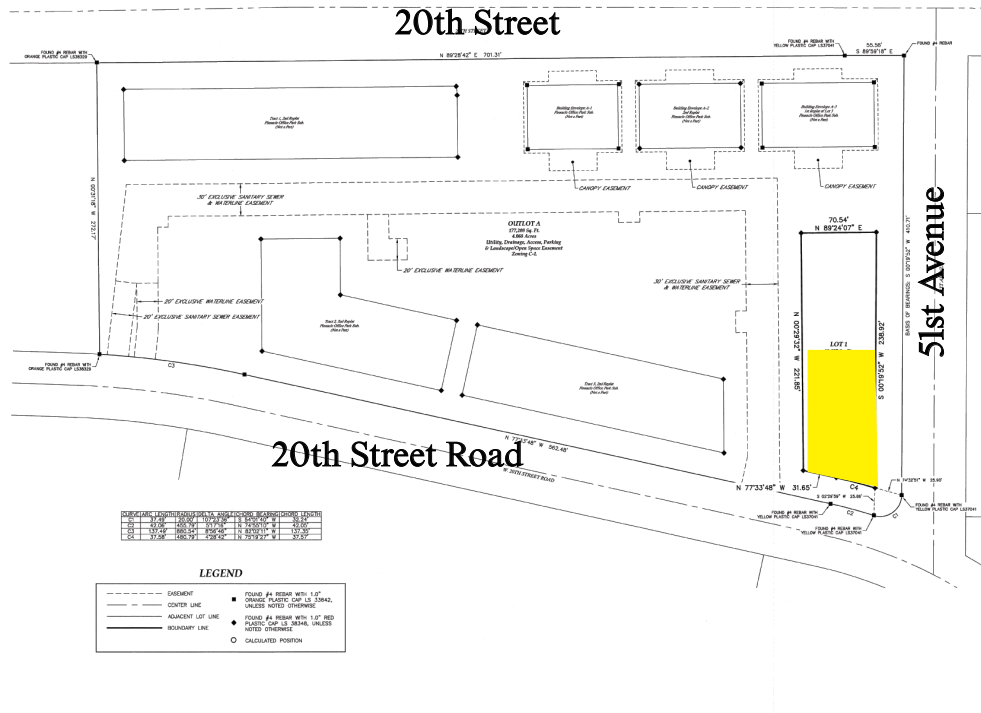


5124 20th Street

64032023 - 2nd Edition 2 of 2
 02/15/2023 10:41 AM
 11/15/2023 10:41 AM

THIRD REPEAT OF PINNACLE OFFICE PARK SUBDIVISION

Being a Replat of Tract 4, Second Replat of Pinnacle Office Park Subdivision
 Located in the North Half of Section 15, Township 5 North, Range 66 West of the 6th P.M.,
 City of Greeley, County of Weld, State of Colorado



WHEELER
Properties

1130 38th Avenue, Suite B • Greeley, CO 80634
 WheelerPropertiesInc.com • 970-352-5860

Information deemed reliable, but not guaranteed. Price, terms and conditions subject to change.

