

**FOR LEASE: Class A Office Space**

**Airport Way - Cascade Station**

Portland International Plaza – 8338 NE Alderwood Drive - Portland Oregon 97220

**INCENTIVES**

**MARKET BEST  
PRICING**

**COMMERCIAL  
BLACK.**



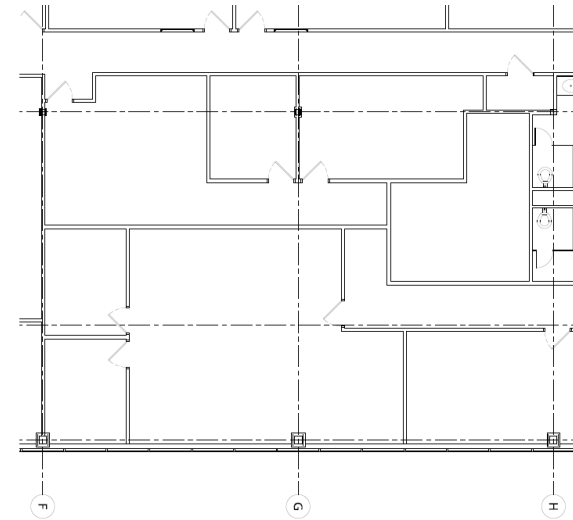
*Maximizing Value with Market Knowledge*

# Building Photos



# Suite 230-A

- Approximately 2,535 Rentable Square Feet
- Three Large Open Areas
- 2nd Floor - East Facing
- Improvements available
- **\$8.00** PSF NNN (Nets \$15.00 PSF Annually)
- Free onsite parking 3:1.000 ratio
- Onsite local ownership
- **NEW RATES**



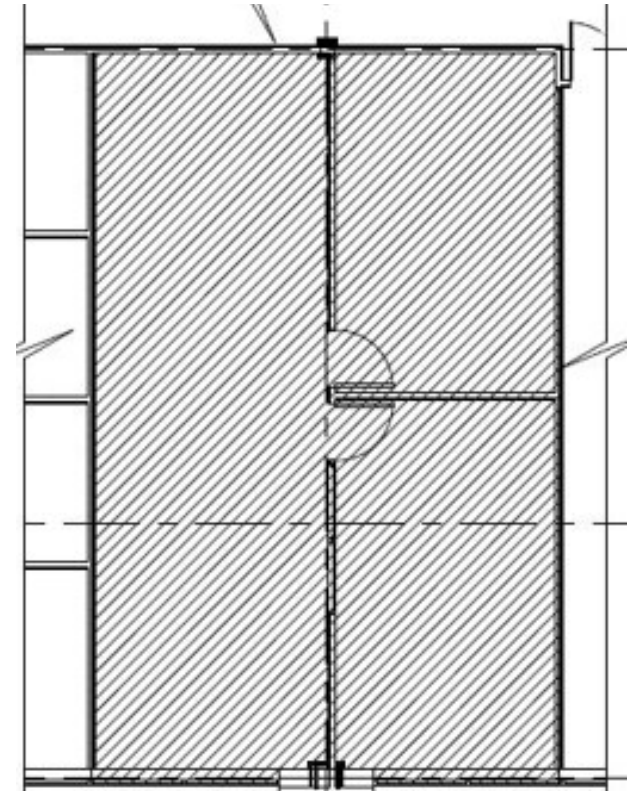
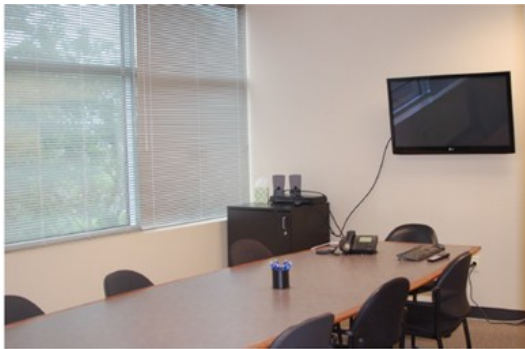
# Suite 180

- Approximately 2,420 Rentable Square Feet
- Large Open Areas w/ Mix of Privates Offices
- 1st Floor - Courtyard Fountain Facing
- Full Kitchen - Break Room
- **\$8.00 PSF NNN** (Nets \$15.00 PSF Annually)
- Free Onsite Parking 3 : 1.000 Ratio
- Onsite Local Ownership + Management
- **NEW RATES!**



# Suite 110

- Approximately 1,146 Rentable Square Feet
- Large Open Areas w/ 2 Large Privates Offices
- 1st Floor
- Move in ready with furniture
- **\$8.00 PSF NNN** (Nets \$15.00 PSF Annually)
- Free Onsite Parking 3:1,000 SF Ratio
- Onsite Local Ownership + Management
- **NEW RATES!**



# Portland International Airport



# Airport Way - Cascade Station Submarket



# PORTLAND INTERNATIONAL PLAZA

## CASCADE STATION



**Portland International Plaza offers a unique opportunity for commercial office space in the company of local and national credit tenants.**

Office Space in Cascade Station Airport Way Submarket  
Nearby to MAX transportation, I-84, I-205, PDX Airport  
Secured lobby and facility in a multi tenant building  
3.00:1,000 Parking Ratio - Free  
Nets are \$10.43 PSF Annually

Area hub for restaurants, anchor retail, shopping and entertainment  
Ideal location for creative, design, and technology firms  
Secured entry to individual office  
Local Ownership and Management

**John Gibson - Licensed Oregon Principal Broker**  
**OR# 971000078**  
**2393 SW Park Place #110**  
**Portland, Oregon 97205**

**503.860.3267 mobile**  
**John.Gibson@commercialblack.com**  
**www.commercialblack.com**

