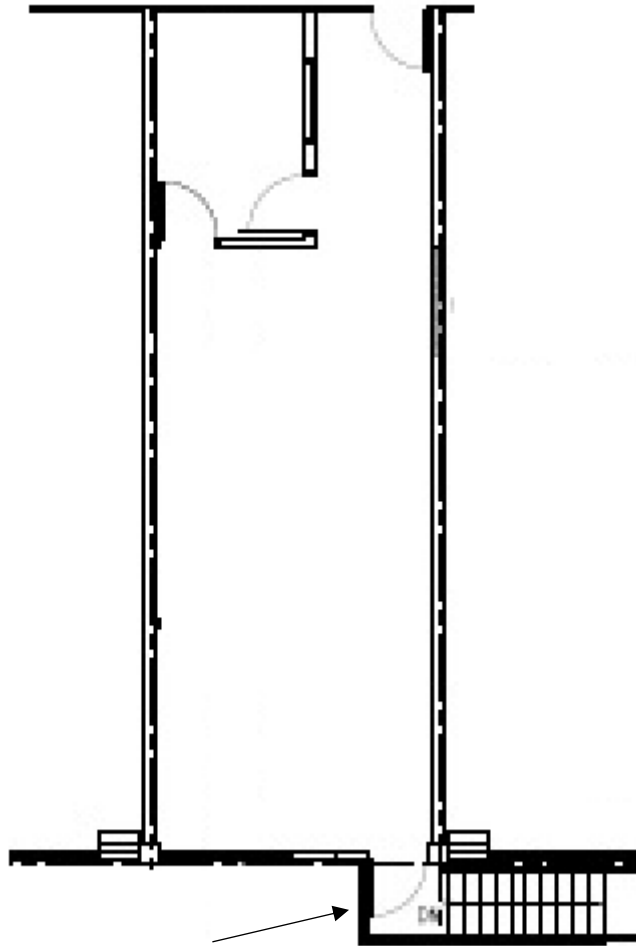
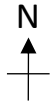
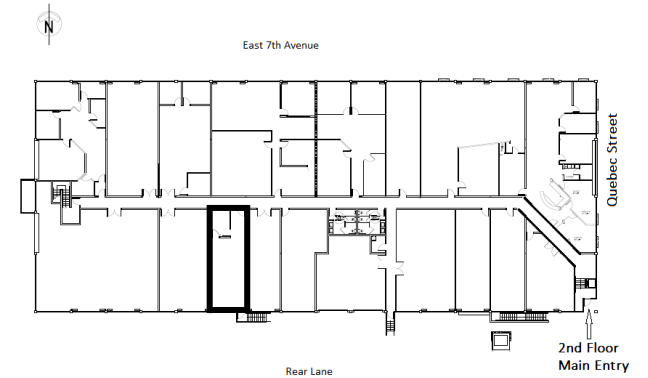


# 2323 Quebec Street, Vancouver, BC



Designated exterior stairwell.



## Suite 222

790 square feet

Description: Light Industrial with wholesale dealer use. Open space with one office and designated exterior stairwell.

This is a representation for marketing purposes only and should not be used for measurements of any kind. This drawing is not to scale.

**TPMG CAPITAL**

Real Estate Acquisition  
Management  
Leasing