



[CLICK HERE TO VIEW PROPERTY VIDEO](#)



LAKEPOINT COMMERCE CENTER

BUILDING 100

740 LakePoint Parkway, Cartersville, Georgia 30121

174,760 SF Available for Lease



**SCAN QR CODE TO
VIEW MATTERPORT**



**LEE &
ASSOCIATES**

COMMERCIAL REAL ESTATE SERVICES

LEASING AGENT



CORE5
INDUSTRIAL PARTNERS

DEVELOPER

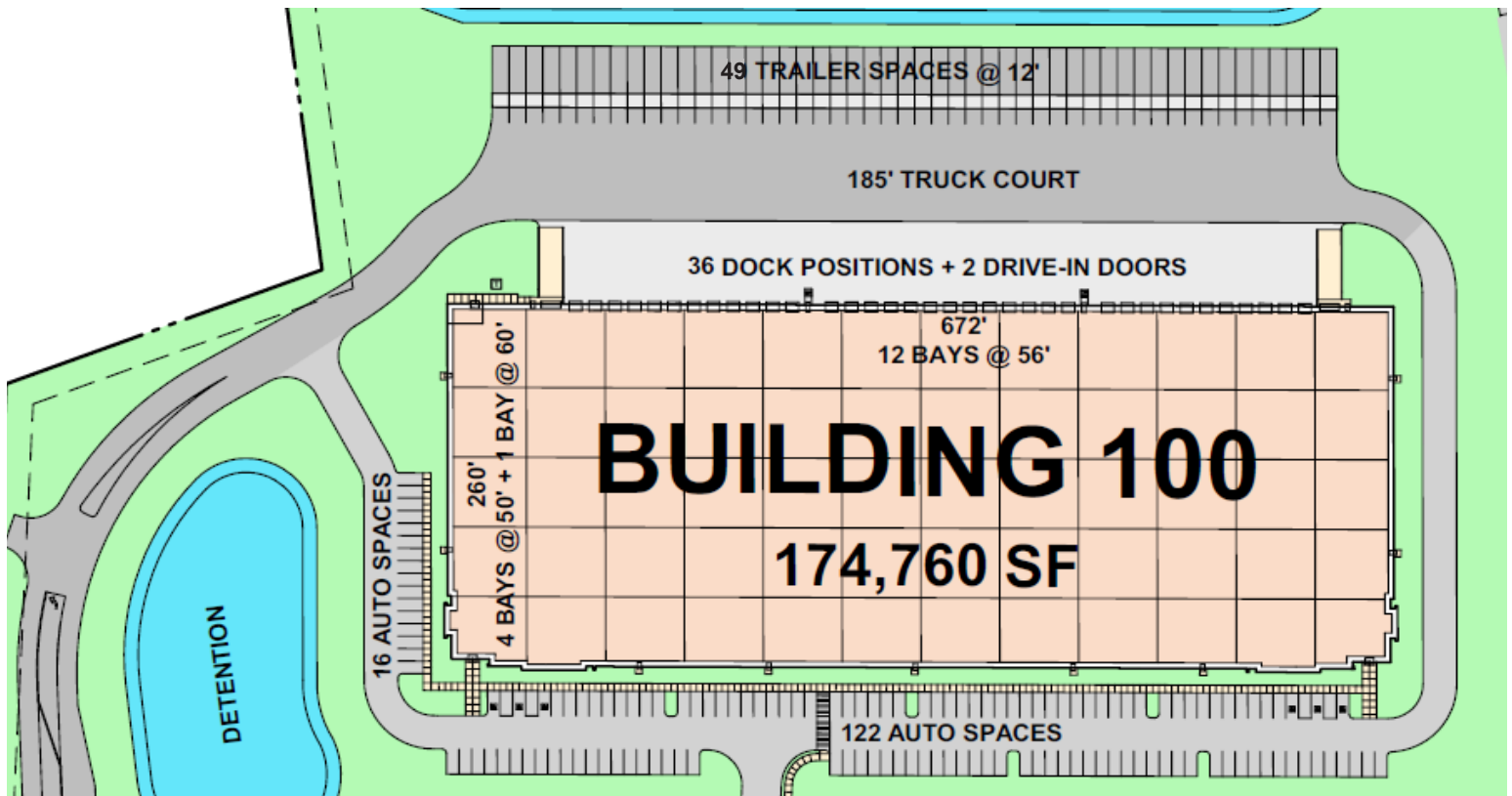
LAKEPOINT COMMERCE CENTER

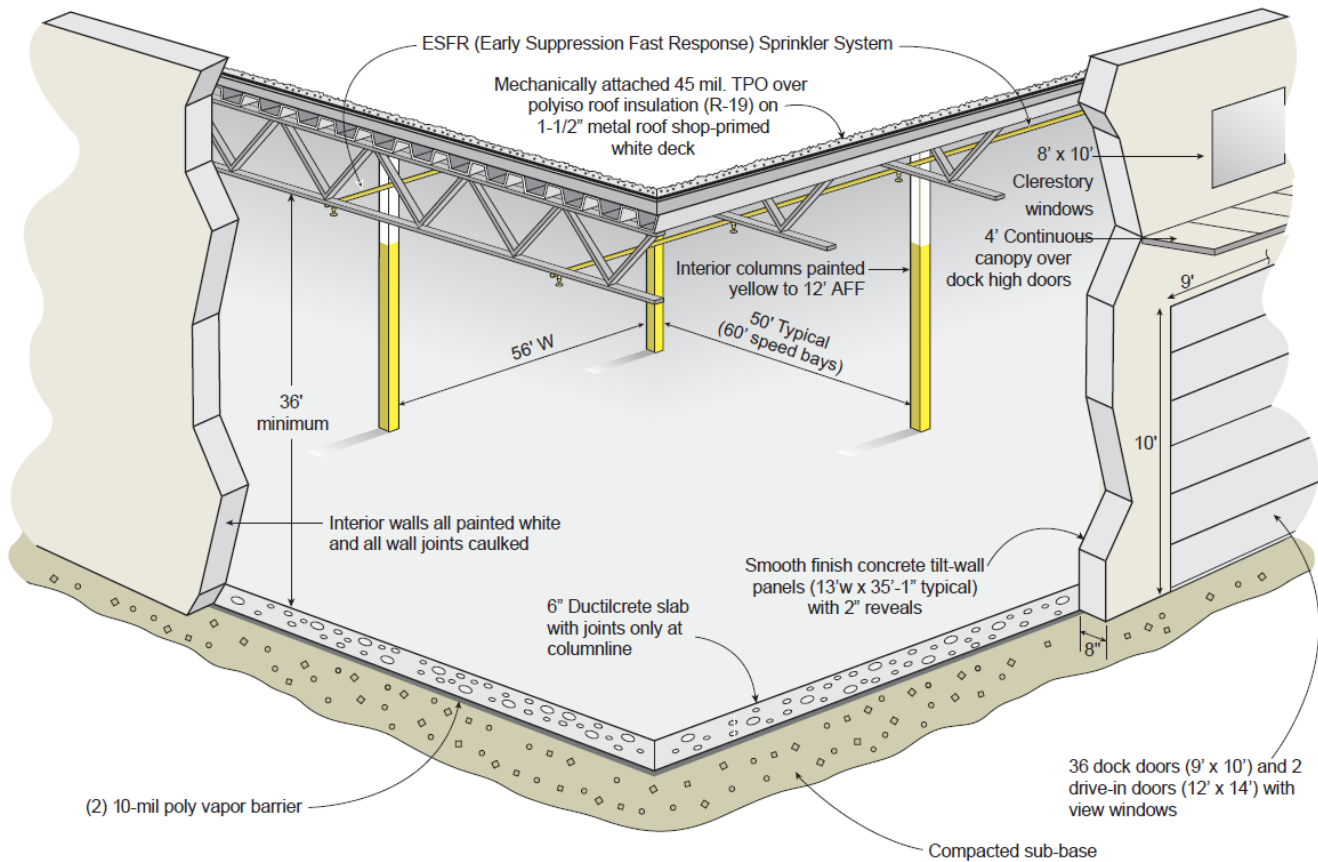
740 LakePoint Parkway, Cartersville, Georgia 30121

174,760 SF Available for Lease

Core5 LakePoint Commerce Center is strategically located less than one mile from I-75 in the heart of Northwest Georgia's industrial corridor. The site offers excellent highway access and is just under 60 miles from the Appalachian Regional Port, providing direct rail connectivity to the Port of Savannah. This prime location makes LakePoint Commerce Center an ideal hub for local, regional, and national distribution.

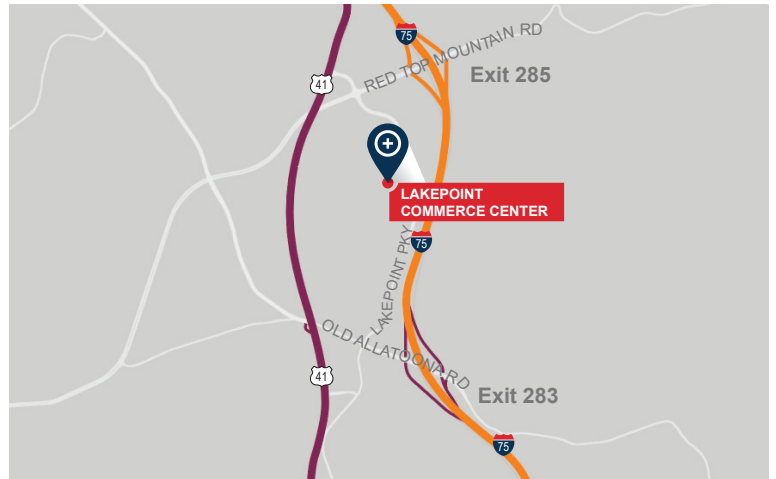
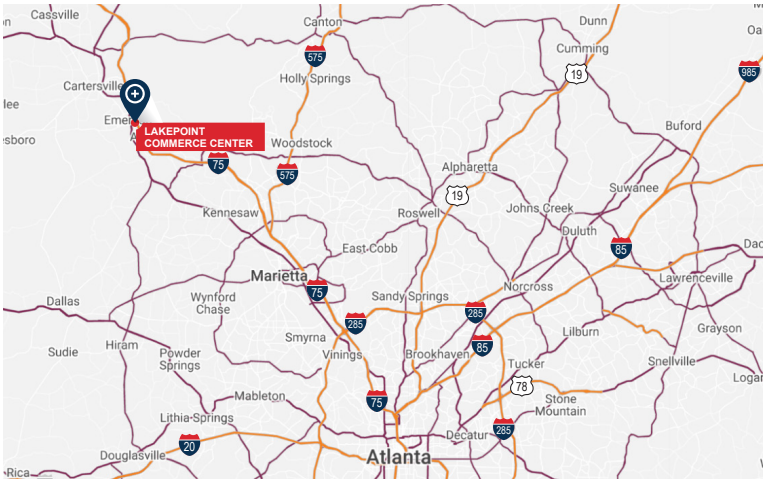
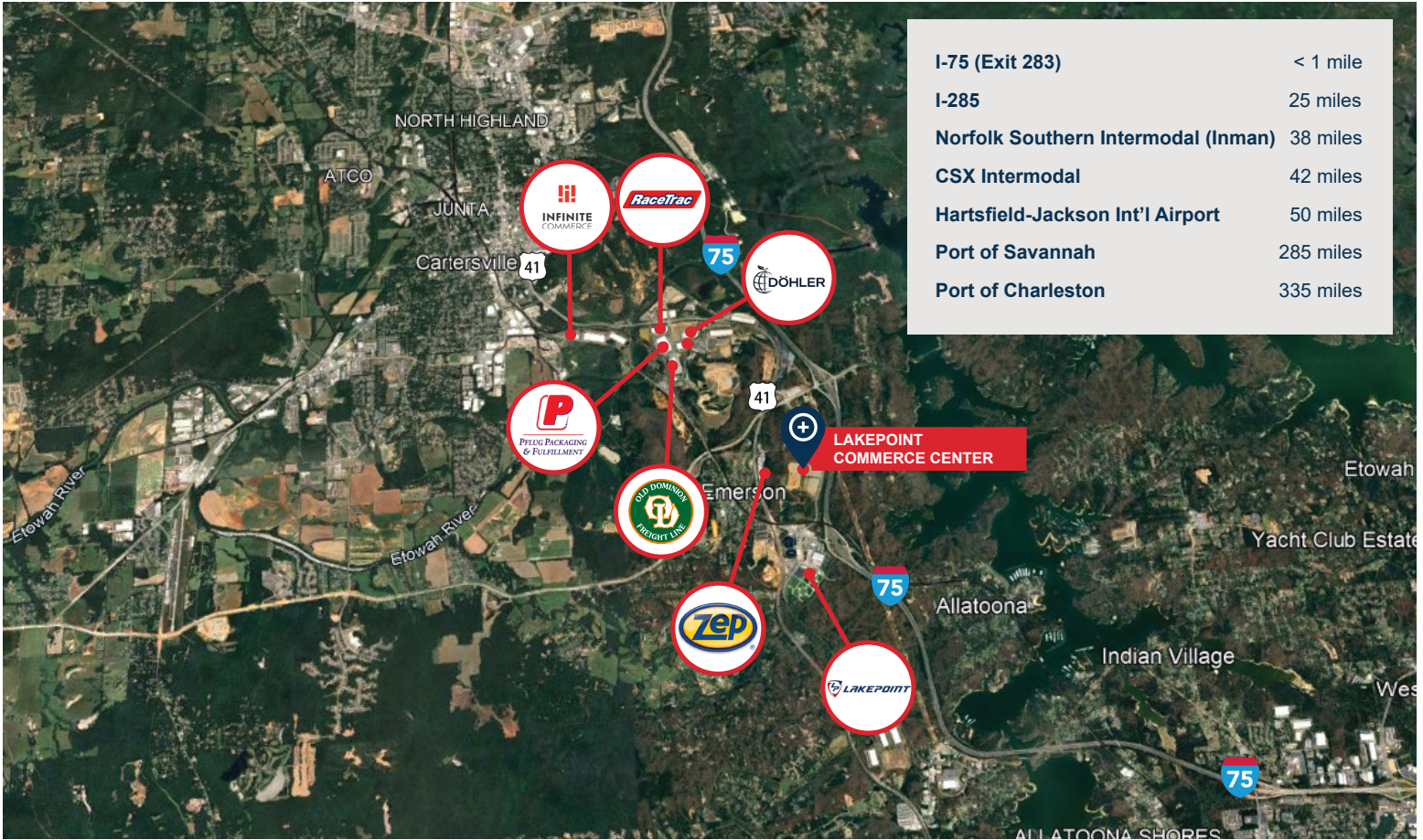
Bartow County is home to more than 140 manufacturers and boasts one of Georgia's strongest labor markets, with a population of over one million people within a 45-minute drive.



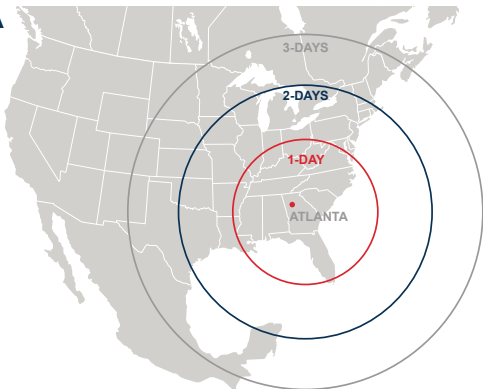


BUILDING SPECIFICATIONS

Square Footage	174,760 SF (260' x 672')
Configuration	Rear Load
Column Spacing	56' wide x 50' deep, with 60' loading bays (14,560 SF bays)
Clear Height	36' clear minimum
Dock High Doors	36 – 9' x 10' insulated dock high doors
Drive-In Doors	2 – 12' x 14' ramped, drive-in doors
Truck Court Depth	185' deep with 60' concrete apron
Auto Parking	138 auto spaces
Trailer Storage	49 trailer storage locations
Electrical	277/480 volt, 3 phase, Two (2) 1,000 amp services
Sprinkler	ESFR sprinkler system



DAYS TRUCK DRIVE TO/FROM ATLANTA



Mitchell Townsend
 Vice President Investments
 O 404.262.5418
 C 706.537.9520
 mtownsend@c5ip.com



Billy Snowden, SIOR
 Executive VP / Principal
 O 404.442.2839
 C 770.354.5981
 bsnowden@lee-associates.com

Willie Candler
 Principal
 O 404.442.2802
 C 770.881.1368
 wcandler@lee-associates.com

© Copyright 2021 Core5 Industrial Partners, LLC. All rights reserved. CORE5, CORE5 INDUSTRIAL PARTNERS, and the stylized "C" CORE5 INDUSTRIAL PARTNERS design / logo are service marks of Core5 Industrial Partners, LLC for its real estate services, namely, acquisition, rental, brokerage, development, leasing, and management of industrial real estate property. These marks may not be used without express permission of Core5 Industrial Partners, LLC.