



# 3411 AVENUE D

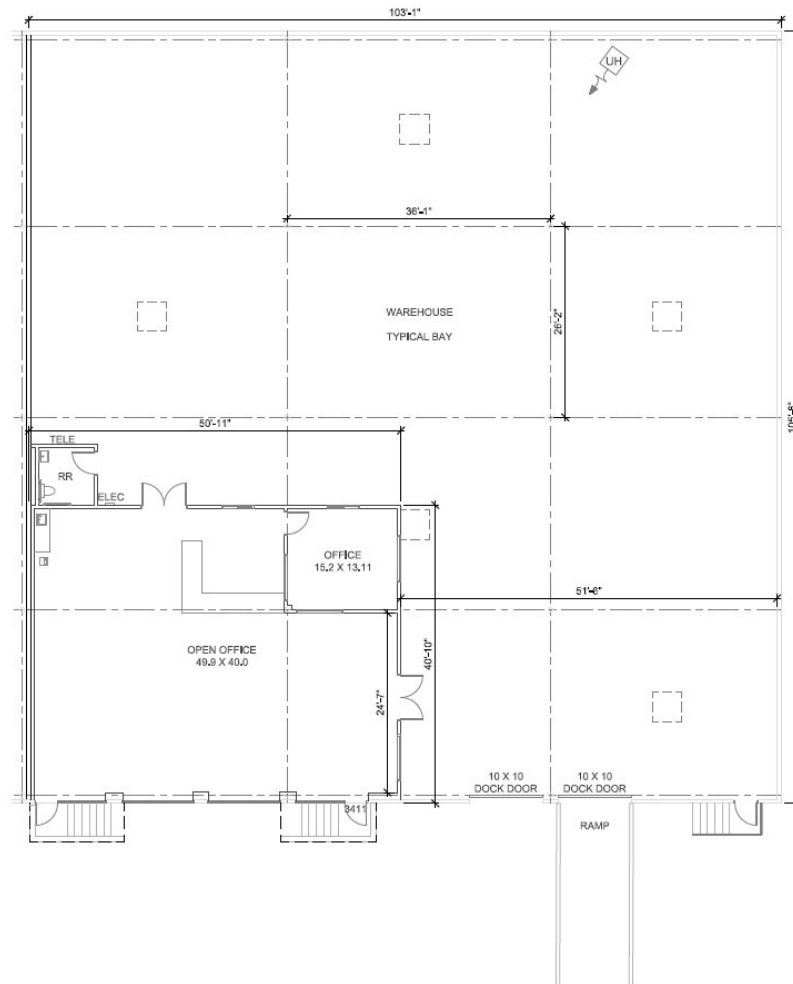
3411 Avenue D | Arlington, Texas 76011

FLOOR PLAN

10,865 SF FOR LEASE

## PROPERTY HIGHLIGHTS

- 10,865 SF for lease
- 2,156 SF office
- One (1) 10' x 10' OH dock door
- One (1) 10' x 10' OH dock door with ramp
- 18' clear height



**CONTACT**

Maddy Coffman  
972.280.8325  
mcoffman@holtlunsford.com

Walker Floyd  
972.265.0141  
wfloyd@holtlunsford.com

