

1201 S. WHEELER STREET
SAGINAW, MICHIGAN

INDUSTRIAL FOR LEASE
48,000 Square Feet Available



**SIGNATURE
ASSOCIATES**
KNOW SIGNATURE | KNOW RESULTS



PROPERTY FEATURES

- 48,000 square feet available
- 1,100 square feet office
- 20' clear height
- (1) 14' x 14' clear height
- (5) truckwells
- 3500 amps, 440 volts, 3-phase power
- Located on 4.170 acres
- (50) parking spaces
- The building is available for sublease until 7/31/26 or a new direct lease
- Lease Rate: \$5.75/sq. ft. NNN



For more information, please contact:

JOE PLASKEY
(248) 948 0110
jplaskey@signatureassociates.com

SIGNATURE ASSOCIATES
One Towne Square, Suite 1200
Southfield, MI 48076
www.signatureassociates.com

PAUL BURBACK
(989) 790 2611
Info@themillergroup.com

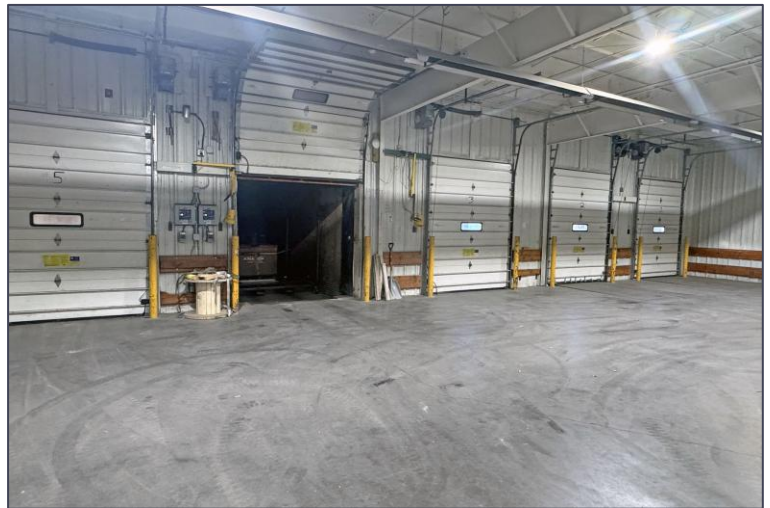
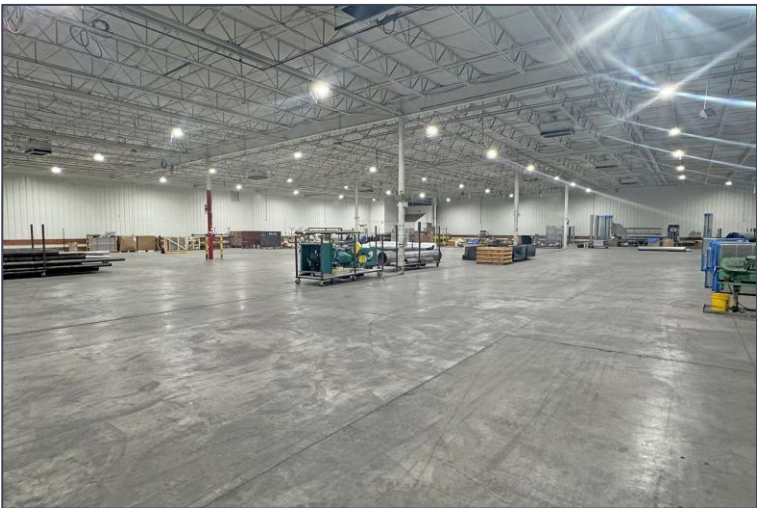
THE MILLER GROUP
2825 Bay Road, Suite 100
Saginaw, MI 48603
www.themillergpr.com

1201 S. Wheeler Street – Saginaw, Michigan

Industrial For Lease

48,000
Square Feet
AVAILABLE

Additional Photos



For more information, please contact:

JOE PLASKEY
(248) 948 0110
jplaskey@signatureassociates.com

SIGNATURE ASSOCIATES
One Towne Square, Suite 1200
Southfield, MI 48076
www.signatureassociates.com

PAUL BURBACK
(989) 790 2611
Info@themillergroup.com

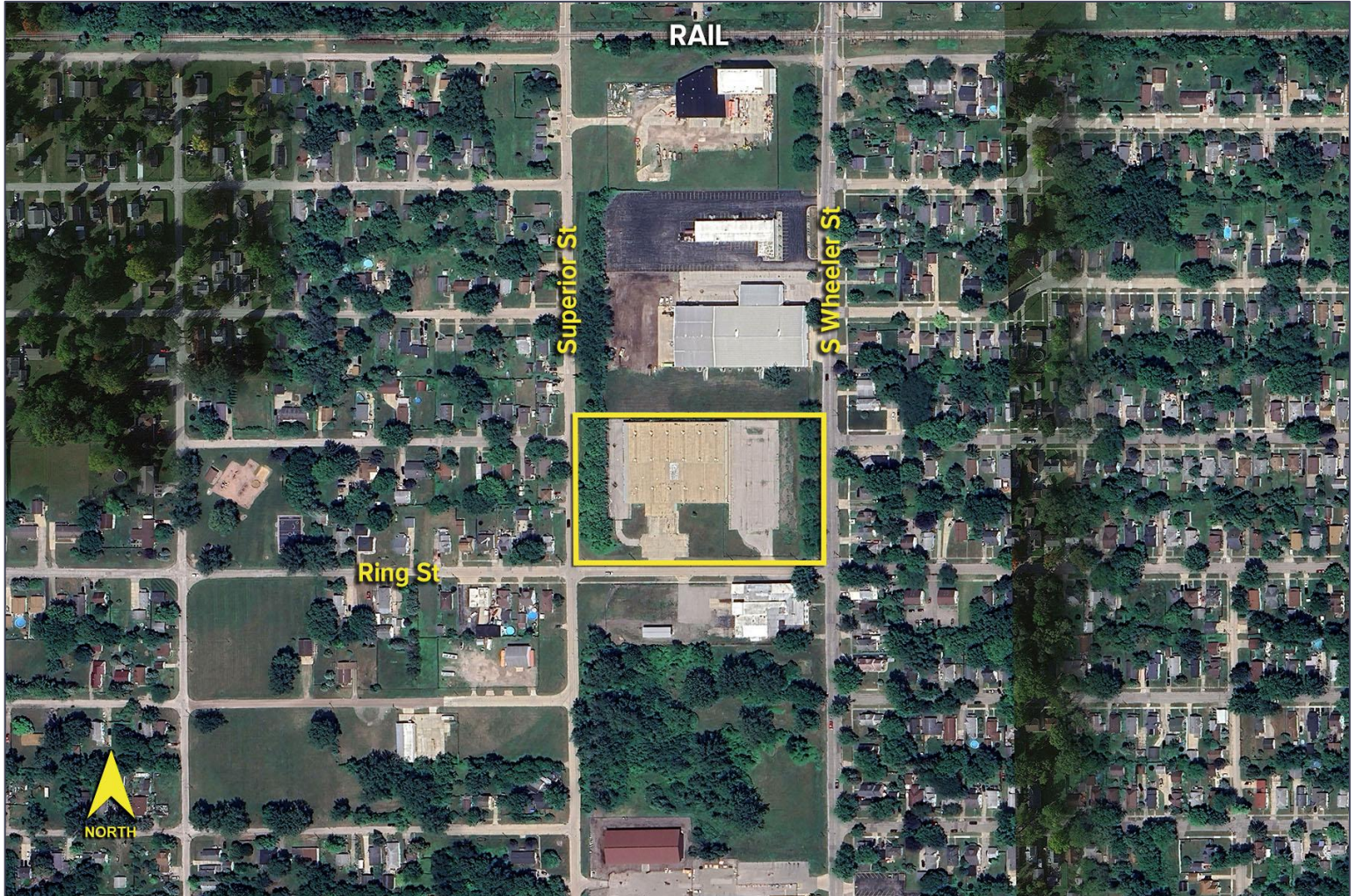
THE MILLER GROUP
2825 Bay Road, Suite 100
Saginaw, MI 48603
www.themillergroup.com

1201 S. Wheeler Street – Saginaw, Michigan

Industrial For Lease

48,000
Square Feet
AVAILABLE

Aerial



For more information, please contact:

JOE PLASKEY
(248) 948 0110
jplaskey@signatureassociates.com

SIGNATURE ASSOCIATES
One Towne Square, Suite 1200
Southfield, MI 48076
www.signatureassociates.com

PAUL BURBACK
(989) 790 2611
Info@themillergroup.com

THE MILLER GROUP
2825 Bay Road, Suite 100
Saginaw, MI 48603
www.themillergroup.com