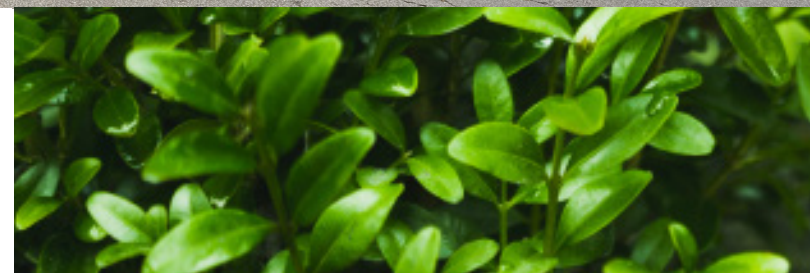




FIRST BANKERS PLAZA

2424 VISTA WAY, OCEANSIDE, CA 92054



AVAILABILITIES

Lease Rate: \$2.00/SF + Electricity

Suite	Square Feet	Available
100	1,611 RSF	Now
120	1,475 RSF	Now





HIGHLIGHTS

Office/Medical Suites for Lease



Immediate Access to CA-78 & I-5



Nearby Chipotle, Broken Yolk,
Trader Joe's, & Macaroni Grill

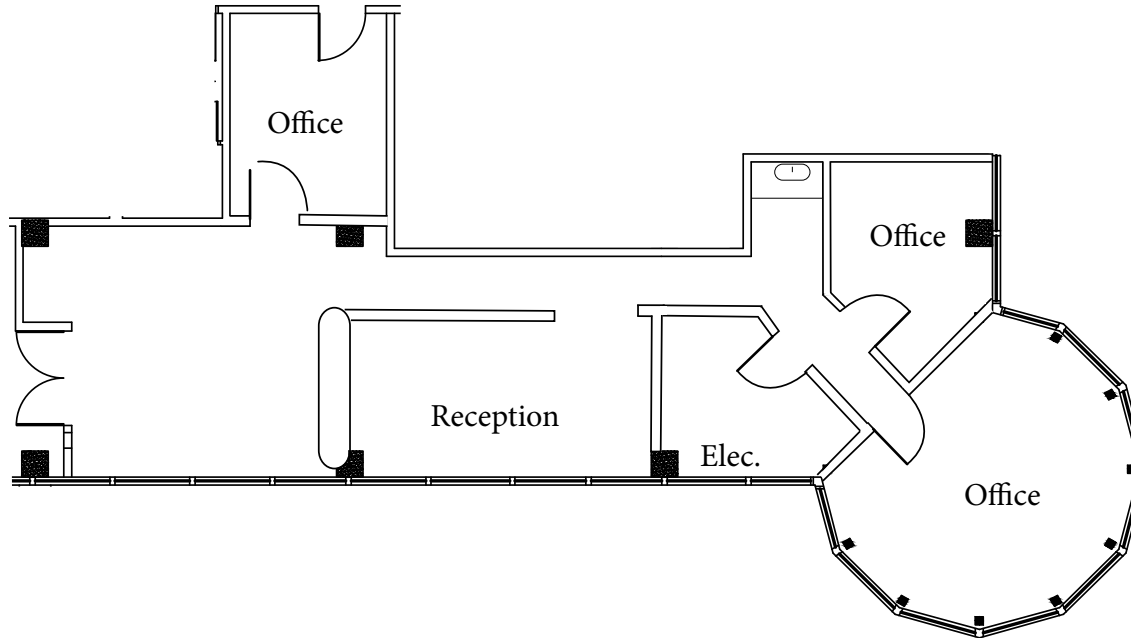


3.6 miles to Tri-City Medical Center



Adjacent To: Fire Mountain
Shopping & Center & El Camino
North Shopping Mall

SUITE 100



Available:

Now



1,611 RSF

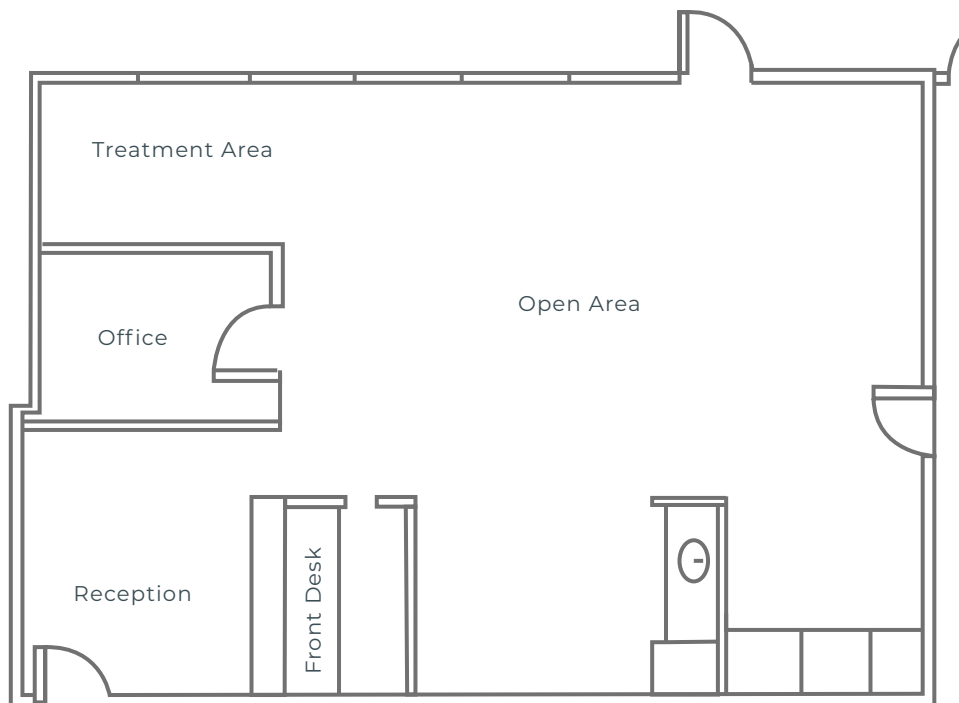


\$2.00/RSF + Electricity



SUITE 120

Features: Private office, open area, treatment area, and reception



Available:

Now



1,475 RSF



\$2.00/RSF + Electricity



MAP



JEFFERSON

2424 VISTA WAY

VISTA WAY





FIRST BANKERS PLAZA

2424 VISTA WAY, OCEANSIDE, CA 92054



CONTACTS

Bob Cowan
First Vice President
+1 760 840 7664
bob.cowan@cbre.com
Lic. 01838109

Matty Sundberg
Senior Vice President
+1 760 845 5410
matty.sundberg@cbre.com
Lic. 01257466

CBRE

© 2026 CBRE, Inc. All rights reserved. This information has been obtained from sources believed reliable but has not been verified for accuracy or completeness. CBRE, Inc. makes no guarantee, representation or warranty and accepts no responsibility or liability as to the accuracy, completeness, or reliability of the information contained herein. You should conduct a careful, independent investigation of the property and verify all information. Any reliance on this information is solely at your own risk. CBRE and the CBRE logo are service marks of CBRE, Inc. All other marks displayed on this document are the property of their respective owners, and the use of such marks does not imply any affiliation with or endorsement of CBRE. Photos herein are the property of their respective owners. Use of these images without the express written consent of the owner is prohibited.