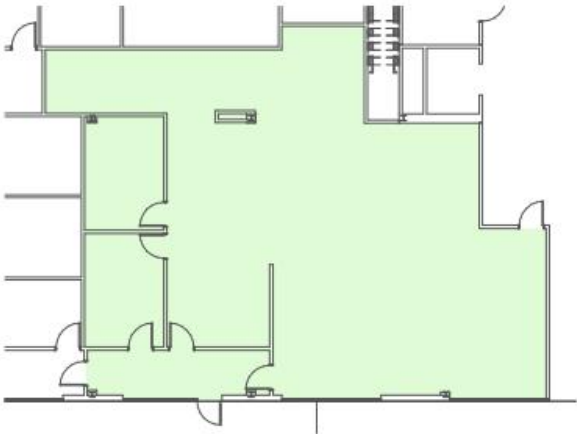


**FIRST FLOOR  
SUITE 171**



TENANT AREA	COMMON (16%)	RENTABLE AREA
2,306 SF	369 SF	2,675 SF

1" = 20' 0 5' 10' 15' 20'



**4021 AMBASSADOR CAFFERY PKWY  
LAFAYETTE, LA 70503**



**ZILER  
ARCHITECTS**  
A PROFESSIONAL  
ARCHITECTURAL  
CORPORATION  
JAMES O. ZILER, ARCHITECT  
SEAN R. PRIMEAUX, ARCHITECT  
101 Calco Boulevard  
Lafayette, Louisiana 70503  
Ph: 337-269-6326

**CONTACT:  
CHAMPION REAL ESTATE SERVICES  
100 RUE IBERVILLE, SUITE 200  
LAFAYETTE, LA 70508  
(337) 593-0444**

**FIRST FLOOR**



**07/10/24**