

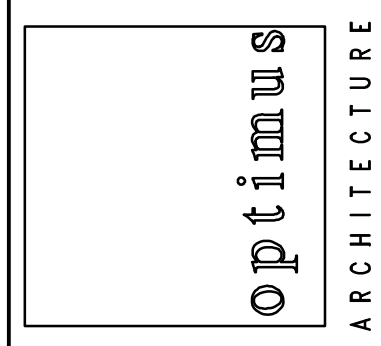
Suites 103, 103A

Suite 104

Suite 101

©2014 OPTIMUS ARCHITECTURE
THIS IS A REVISION OF THE PLAN FOR THE PERSON, FIRM OR COMPANY, WHOSE NAME IS SPECIFICALLY REFERENCED HEREIN. THE PROJECT ORIGINATOR IS RESPONSIBLE FOR THE ACCURACY OF THE ORIGINAL PLAN. THE REVISIONS TO THIS PLAN ARE THE PROPERTY OF OPTIMUS ARCHITECTURE AND THE DATE OF SUCH REVISIONS AND A SPECIFIC DESCRIPTION OF THE REVISIONS.

187 E. Market Street
Suite 180
Rhinebeck NY 12572
845 876 8202 phone
845 876 8112 fax

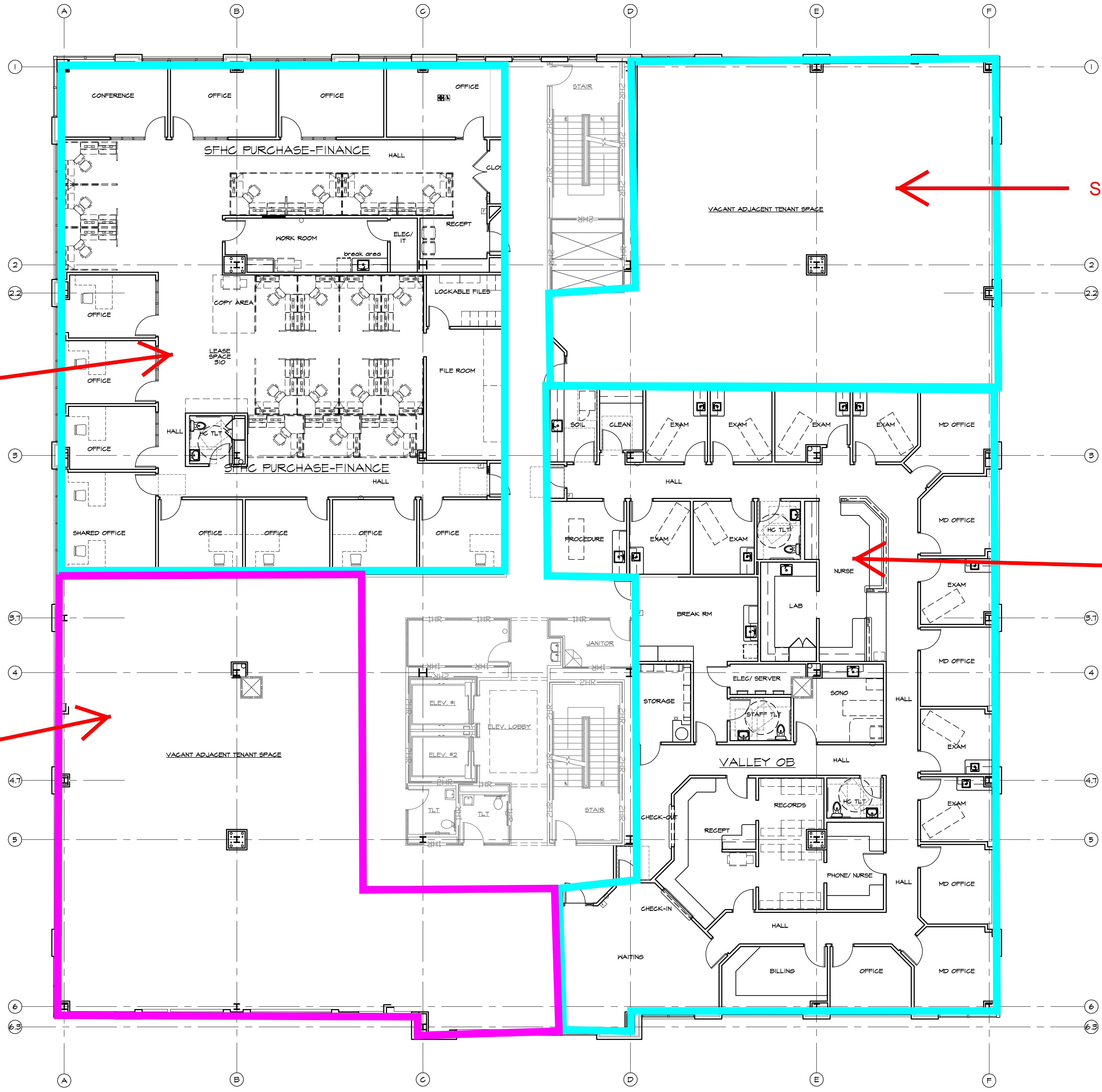


SCALE	DATE	BY	CHKD. BY
AS NOTED	07/03/14	JDT	DAS
#	DATE	REVISIONS	

PROJECT #11501
EXISTING Floor Plan:
MID-HUDSON REGIONAL HOSPITAL OF
WESTCHESTER MEDICAL CENTER
POUGHKEEPSIE, NEW YORK
DRAWING TITLE
EXISTING FIRST FLOOR PLAN

DRAWING NUMBER

A1



Suite 305

Suite 301

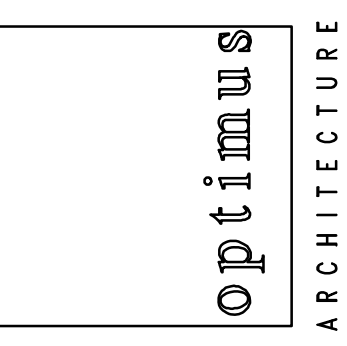
Suite 302

Suite 300
VACANT

© 2014 OPTIMUS ARCHITECTURE

IT IS A VIOLATION OF THE LAW FOR ANY PERSON, UNLESS
 SOLELY UNDER THE SUPERVISION OF A LICENSED ARCHITECT
 TO REPRODUCE OR TO BE REPRODUCED IN ANY MANNER
 WITHOUT THE WRITTEN PERMISSION OF THE ARCHITECT.
 ANY REPRODUCTION OF THIS DRAWING WITHOUT THE
 WRITTEN PERMISSION OF THE ARCHITECT IS PROHIBITED.
 AND THE DATE OF SUCH REPRODUCTION AND A SPECIFIC
 DESCRIPTION OF THE REPRODUCTION.

187 E. Market Street
 Suite 180
 Rhinebeck NY 12572
 845 876 8202 phone
 845 876 8112 fax



SCALE	DATE	BY	CHKD. BY
AS NOTED	07/03/14	JDT	DAS
#	DATE	REVISIONS	

PROJECT #1501
 Existing Floor Plan:
 MIDHudson REGIONAL HOSPITAL OF
 WESTCHESTER MEDICAL CENTER
 Poughkeepsie, New York
 DRAWING TITLE
 EXISTING THIRD FLOOR PLAN

DRAWING NUMBER

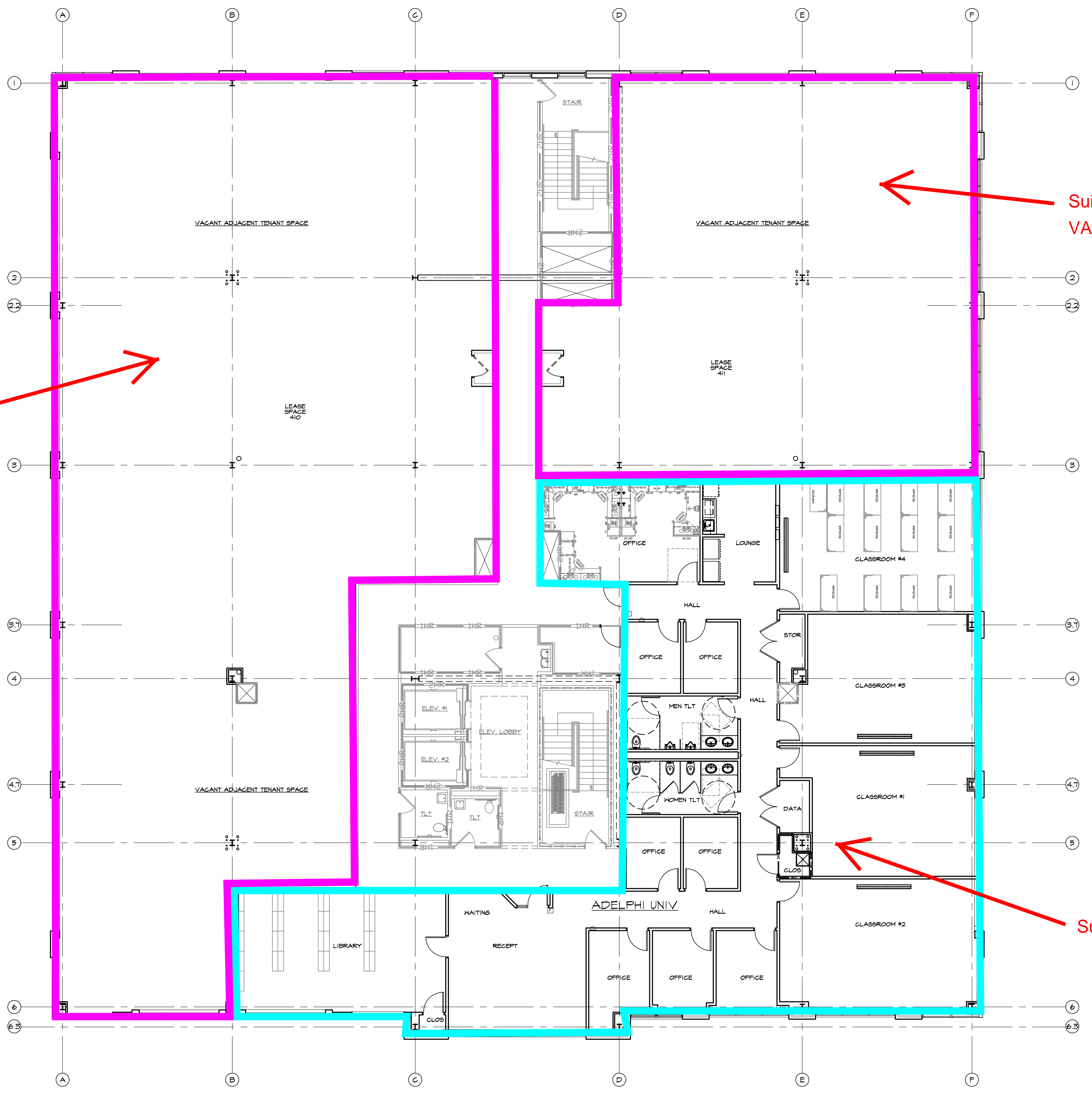
A3

SCALE	DATE	DRAWN BY	CHECKED BY
AS NOTED	07/03/14	JDT	DAS
#	DATE	REVISIONS	

PROJECT	PROJECT #1501
DRAWING TITLE	EXISTING FOURTH FLOOR PLAN
PROJECT DESCRIPTION	Existing Floor Plan: MIDHudson REGIONAL HOSPITAL OF WESTCHESTER MEDICAL CENTER POUGHKEEPSIE, NEW YORK

DRAWING NUMBER

A4



Suite 402
VACANT

Suite 405
VACANT

Suite 400