



Parkland Industrial Park

WHERE INDUSTRY MOVES

LOTS FOR SALE

3.53 acres - 11.84 acres

[Lots are rough graded, serviced and shovel ready]





**AVISON
YOUNG**

TAG
DEVELOPMENTS

Parkland Industrial Park

Parkland Industrial Park's purpose is to support light and medium industrial development to accommodate the growth of Acheson as a major employment area.

-  Acheson offers lower property tax and no business tax
-  Close proximity to multiple communities allows Acheson businesses excellent access to a large skilled labour pool

Ideal Users

- Transportation and cross dock facilities
- Truck and equipment dealerships
- Food services and distribution
- Warehouse and distribution centres
- Owner users



Available Lots

Lot 333B

Legal Description: Plan 1320217
Block 1, Lot 333B

Site Size: 5.02 Acres

Current Zoning: MI - Medium Industrial

Price: \$609,000 per acre

SOLD

Lot 223

Legal Description: Plan 0740392
Block 2, Lot 223

Site Size: 3.53 Acres

Current Zoning: MI - Medium Industrial

Price: \$619,000 per acre

Lot 406

Legal Description: Plan 1424920
Block 5, Lot 406

Site Size: 4.89 Acres

Current Zoning: MI - Medium Industrial

Price: \$579,000 per acre

SOLD

Lot 3

Legal Description: Plan 16229847
Block 5 Lot 3

Site Size: 11.84 Acres

Current Zoning: MI - Medium Industrial

Price: \$479,000 per acre

Lot 420

Legal Description: Plan 1821730
Block 5, Lot 420

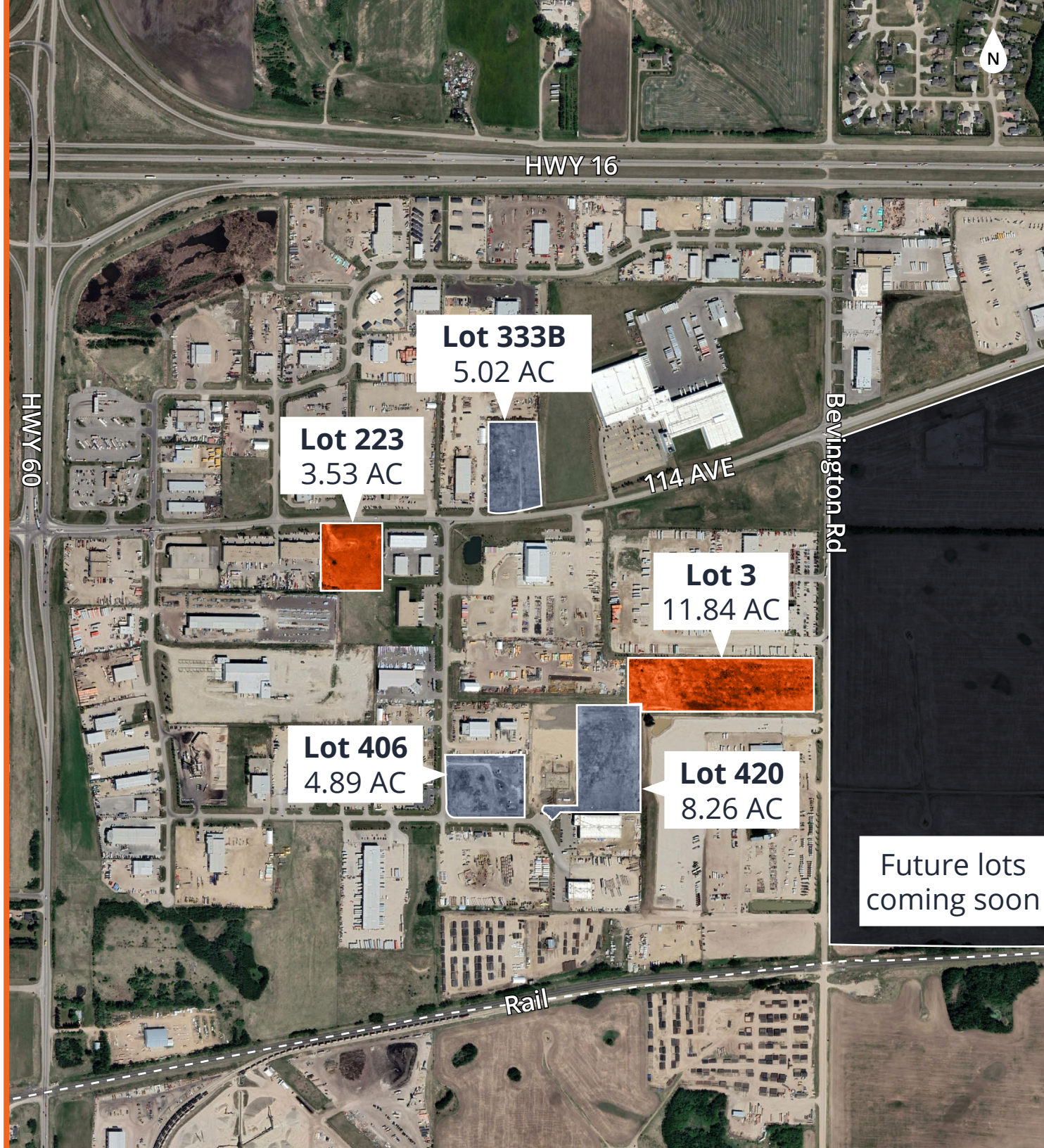
Site Size: 8.26 Acres

Current Zoning: MI - Medium Industrial

Price: \$395,000 per acre

SOLD

Ready for immediate development







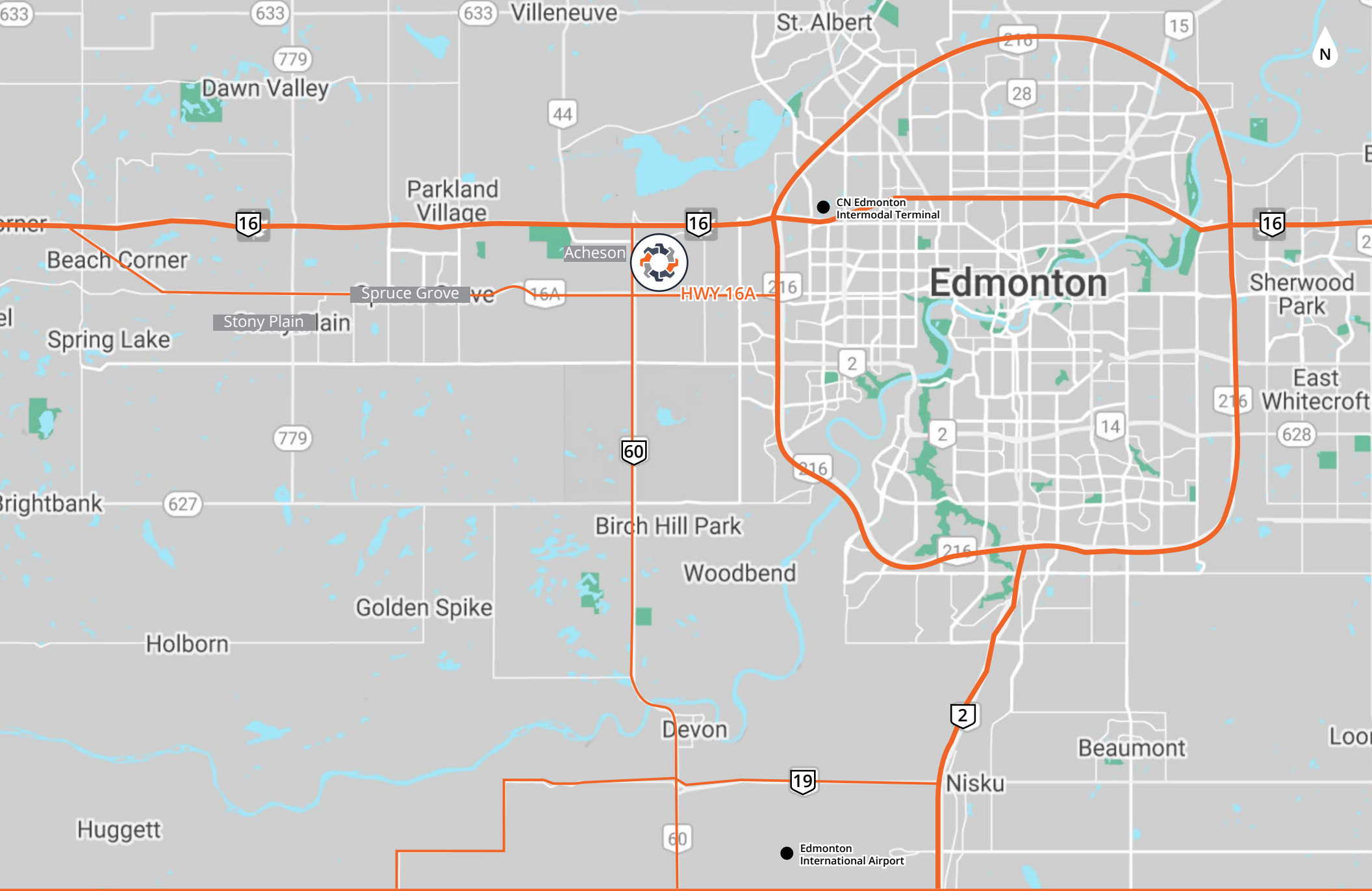
Located in Parkland County, Acheson is one of the largest and fastest growing industrial areas in Western Canada and is located at the junction of major provincial and regional arterial roadways.



**Growing business
community**

PARKLAND COUNTY

*Click to get to know more about
Parkland County.*



**Excellent
connectivity**

The park can be accessed via Highway 16 and Highway 60 with connectivity to the Edmonton international airport. It is just west of major transportation routes including Anthony Henday Ring Road, and the CN Intermodal Yard.

Get more information

Grant Ranslam

Principal
780.702.5853
grant.ranslam@avisonyoung.com

Ryan Zabloski

Principal
780.702.0691
ryan.zabloski@avisonyoung.com

Thomas Ashcroft, SIOR

Principal
780.429.7571
thomas.ashcroft@avisonyoung.com

**AVISON
YOUNG**

© 2026 Avison Young Commercial Real Estate Services, LP. All rights reserved. E. & O.E.: The information contained herein was obtained from sources which we deem reliable and, while thought to be correct, is not guaranteed by Avison Young



Parkland Industrial Park

WHERE INDUSTRY MOVES

ACHESON, AB

ABOUT THE DEVELOPER

Operating since 1971, TAG Developments has built or purchased over 2 million square feet of industrial, office, and retail space and developed and sold over 4,250 acres of land in the Edmonton Metropolitan Region.

TAG Developments is a full cycle real estate developer in the Edmonton Metropolitan Region. Developing raw land into industrial, commercial, and residential neighborhoods for the end user is their main focus.

TAG
DEVELOPMENTS