



**WORLD HOUSTON**  
INTERNATIONAL BUSINESS CENTER

**BUILDING 31A**  
**SUITE 150**



[VIRTUAL TOUR](#)

## PROJECT OVERVIEW

**3,733 SQUARE FEET**

4540 KENDRICK PLAZA DRIVE, SUITE 150, HOUSTON, TX



• 3,401 SF Office



• Fully Sprinklered



• One Grade Level Loading Door



• Located within a Master Planned, Deed Restricted Business Park



• 16' Clear Height



• Easy Access to Bush IAH, Beltway 8, I-45, Hwy 59 and the Hardy Toll Road

**EASTGROUP**  
PROPERTIES

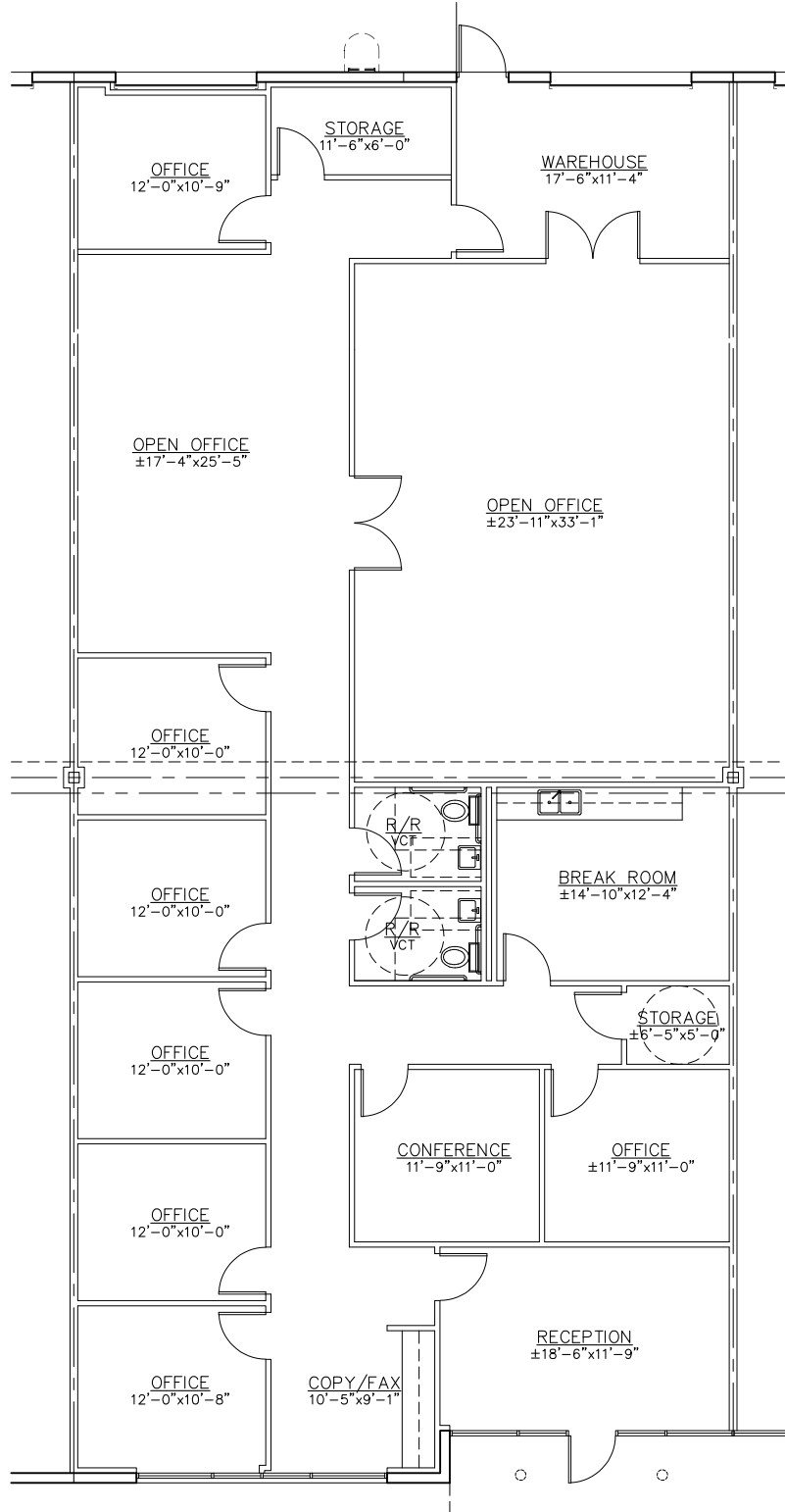
**INSITE**



# FLOOR PLAN

**3,733 SQUARE FEET**

**4540 KENDRICK PLAZA DRIVE, SUITE 150, HOUSTON, TX**





# LOCATION MAPS



**STRATEGIC LOCATION ADVANTAGE**

**DRIVE TIME SUMMARY**

Metro	Distance	Travel Time	Population
ATK	165 MI.	2.6 hrs	2,300MM
SA	209 MI.	3.1 hrs	2,550MM
DAL	232 MI.	3.2 hrs	7,750MM

Map showing connections to DALLAS, AUSTIN, and SAN ANTIPO.

**CONTACT INFORMATION**

**LOGAN GREER**  
lgreer@insiterealty.com  
713.339.5363

**DAYNE WUNDERLICH**  
dwunderlich@insiterealty.com  
713.339.5329

**EASTGROUP**  
PROPERTIES

**INSITE**