

KIDDER.COM



# SOMA CREATIVE SPACE

*Full Second Floor Available For Lease*

424 9TH ST, SAN FRANCISCO, CA 94103

SCOTT VIX  
Kidder Mathews  
415.309.4015  
scott.vix@kidder.com  
LIC# 01407761

TOM MARTINDALE  
Tri Commercial Real Estate Services  
415.601.5066  
tom.martindale@tricommercial.com  
LIC# 00985891



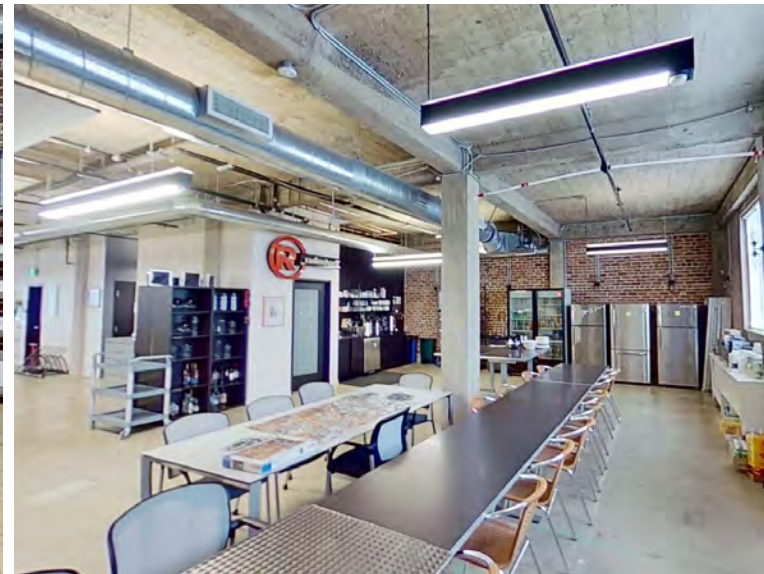
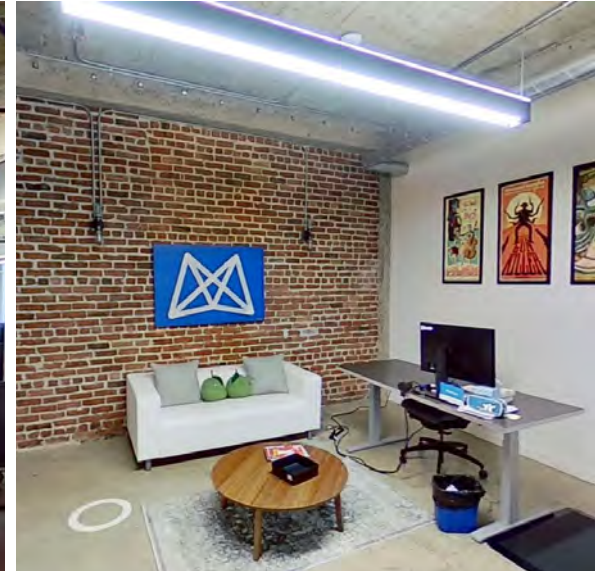
[→ VIEW VIRTUAL TOUR](#)

**SECOND FLOOR OVERVIEW**

TOTAL FLOOR SIZE	±6,690 RSF
AVAILABILITY	Available Now
LEASE RATE	Call Agent
ZONING	SALI
CONSTRUCTION	Exposed brick, steel, and concrete
POWER	1,200 Amp, 3-Phase
SPRINKLERS	Yes
HVAC	Yes

**SPACE FEATURES**

- Fully renovated in 2016
- Polished concrete floors
- High-end creative finishes
- High exposed ceilings
- Two ADA bathrooms and showers
- Kitchenette
- Secure bike storage in lobby

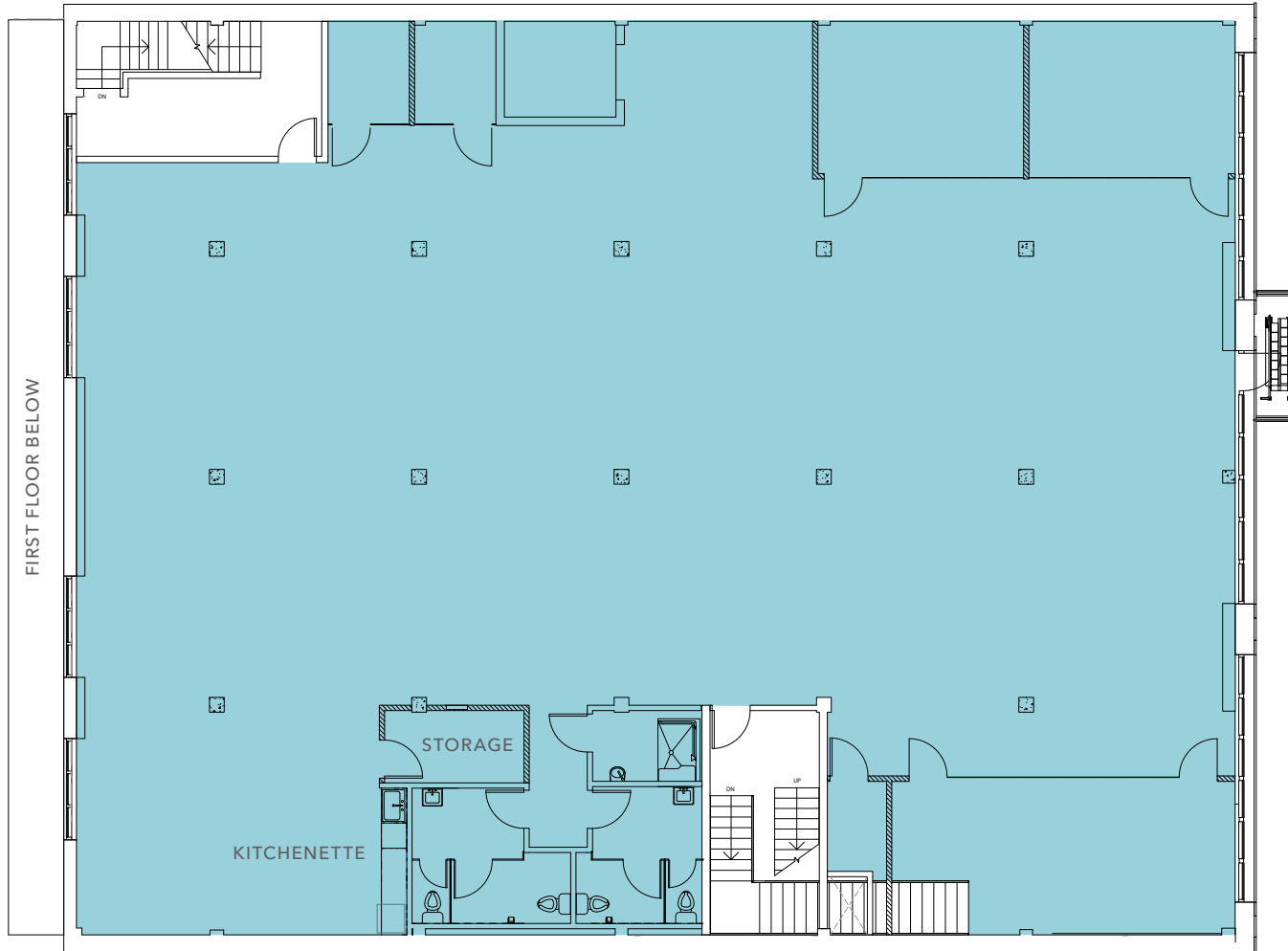


**KIDDER.COM**

This information supplied herein is from sources we deem reliable. It is provided without any representation, warranty, or guarantee, expressed or implied as to its accuracy. Prospective Buyer or Tenant should conduct an independent investigation and verification of all matters deemed to be material, including, but not limited to, statements of income and expenses. Consult your attorney, accountant, or other professional advisor. All Kidder Mathews designs are the sole property of Kidder Mathews. Branded materials and layouts are not authorized for use by any other firm or person.



# SECOND FLOOR PLAN



*±6,690 SF*

AVAILABLE

*CALL AGENT*

LEASE RATE

*NOW*

AVAILABLE

FLOOR PLAN NOT TO SCALE

[KIDDER.COM](http://KIDDER.COM)

This information supplied herein is from sources we deem reliable. It is provided without any representation, warranty, or guarantee, expressed or implied as to its accuracy. Prospective Buyer or Tenant should conduct an independent investigation and verification of all matters deemed to be material, including, but not limited to, statements of income and expenses. Consult your attorney, accountant, or other professional advisor. All Kidder Mathews designs are the sole property of Kidder Mathews. Branded materials and layouts are not authorized for use by any other firm or person.

