



LEASE

Allisonville Professional Turnkey Medical Office

10412 ALLISONVILLE ROAD, SUITE 215

Fishers, IN 46038

PRESENTED BY:

**JESS LAWHEAD, SIOR, CCIM,
CBI**

Phone: 317.447.4403

jess.lawhead@svn.com

IN #RB14047741

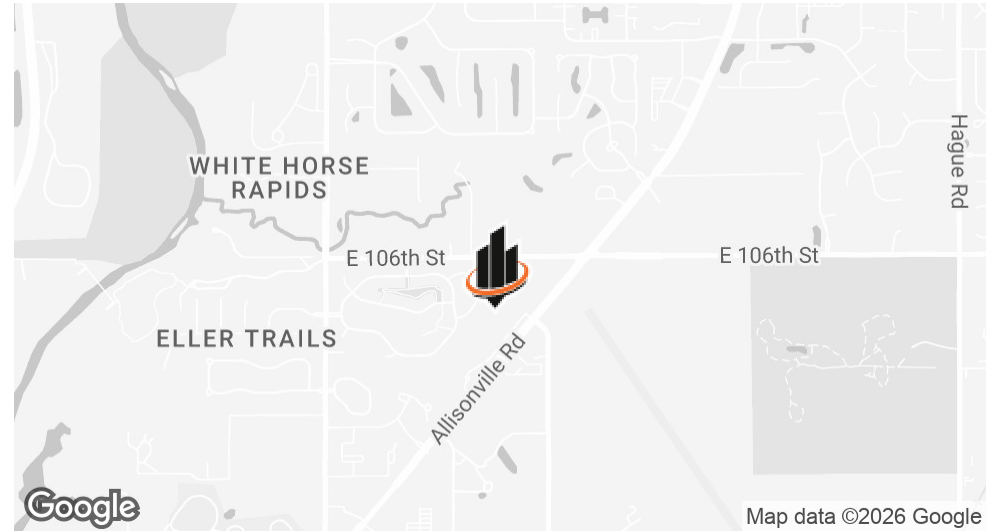
AMBER GARVER

Phone: 317.843.8448

amber.garver@svn.com

IN #RB25001393

PROPERTY SUMMARY



OFFERING SUMMARY

LEASE RATE:	\$25 SF/yr (NNN)
AVAILABLE SF:	764 SF
LOT SIZE:	0.53 Acres
BUILDING SIZE:	51,948 SF
NOI:	\$0.00
CAP RATE:	0.0%

PROPERTY DESCRIPTION

SVN | Northern Commercial is pleased to present Suite 215, a 764 RSF turnkey medical office suite. The space features a reception area with built-in desk, a private office, an exam/lab-support room with sink, and exam rooms with medical-grade finishes, ready for immediate occupancy. The suite is well-suited for medical or professional use and is located within a professionally managed building.

PROPERTY HIGHLIGHTS

- Fully equipped exam room and lab/support room with sink
- Private provider office
- Reception area with built-in reception desk
- Dedicated on-site parking for tenants and patients
- Professionally managed building

JESS LAWHEAD, SIOR, CCIM, CBI

O: 317.447.4403

jess.lawhead@svn.com

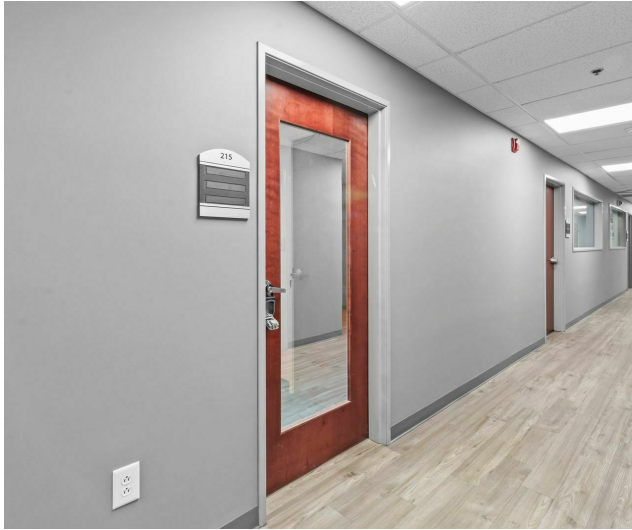
IN #RB14047741

AMBER GARVER

O: 317.843.8448

amber.garver@svn.com

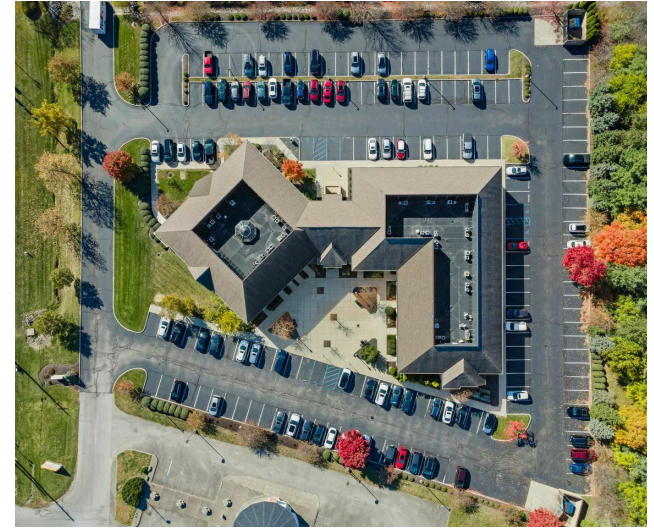
IN #RB25001393



JESS LAWHEAD, SIOR, CCIM, CBI
O: 317.447.4403
jess.lawhead@svn.com
IN #RB14047741

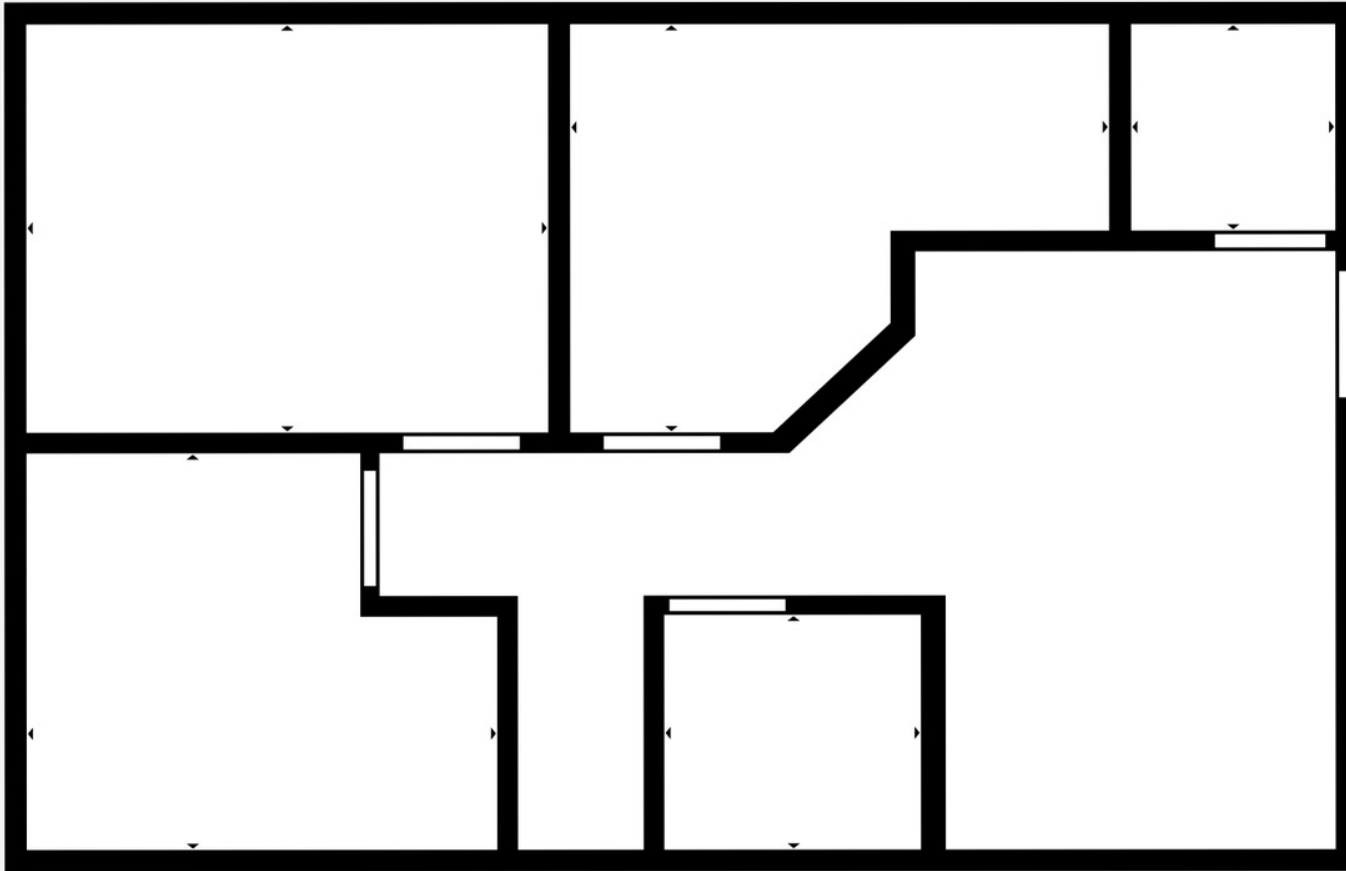
AMBER GARVER
O: 317.843.8448
amber.garver@svn.com
IN #RB25001393

ADDITIONAL PHOTOS



JESS LAWHEAD, SIOR, CCIM, CBI
O: 317.447.4403
jess.lawhead@svn.com
IN #RB14047741

AMBER GARVER
O: 317.843.8448
amber.garver@svn.com
IN #RB25001393




 **Matterport Property Report:**

10412 Allisonville Road

Gross Floor Area - Full Property 685 sq. ft. | Floor 1 685 sq. ft.

Sizes and dimensions are approximate, actual may vary

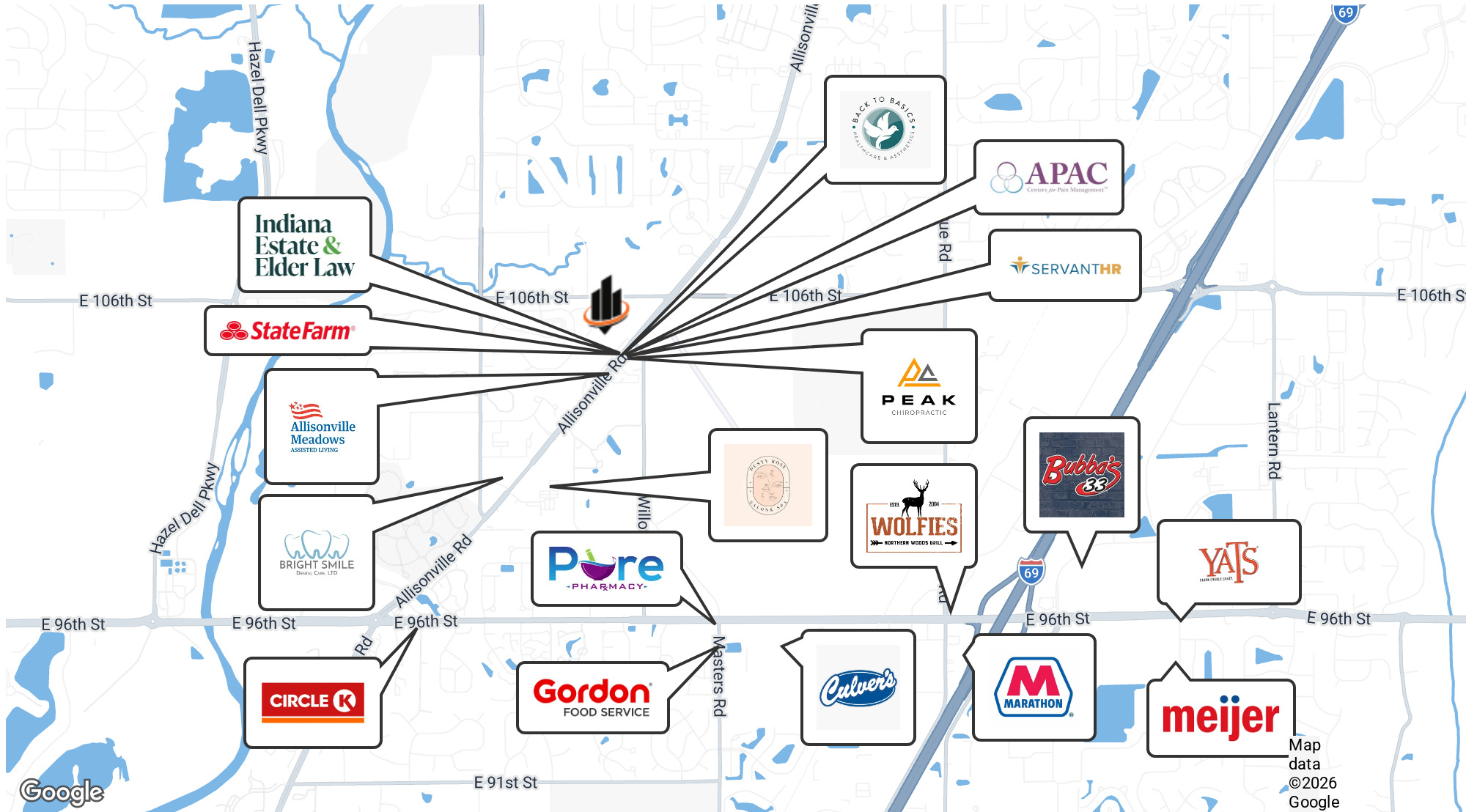
Visit 3D space on
 Matterport



JESS LAWHEAD, SIOR, CCIM, CBI
O: 317.447.4403
jess.lawhead@svn.com
IN #RB14047741

AMBER GARVER
O: 317.843.8448
amber.garver@svn.com
IN #RB25001393

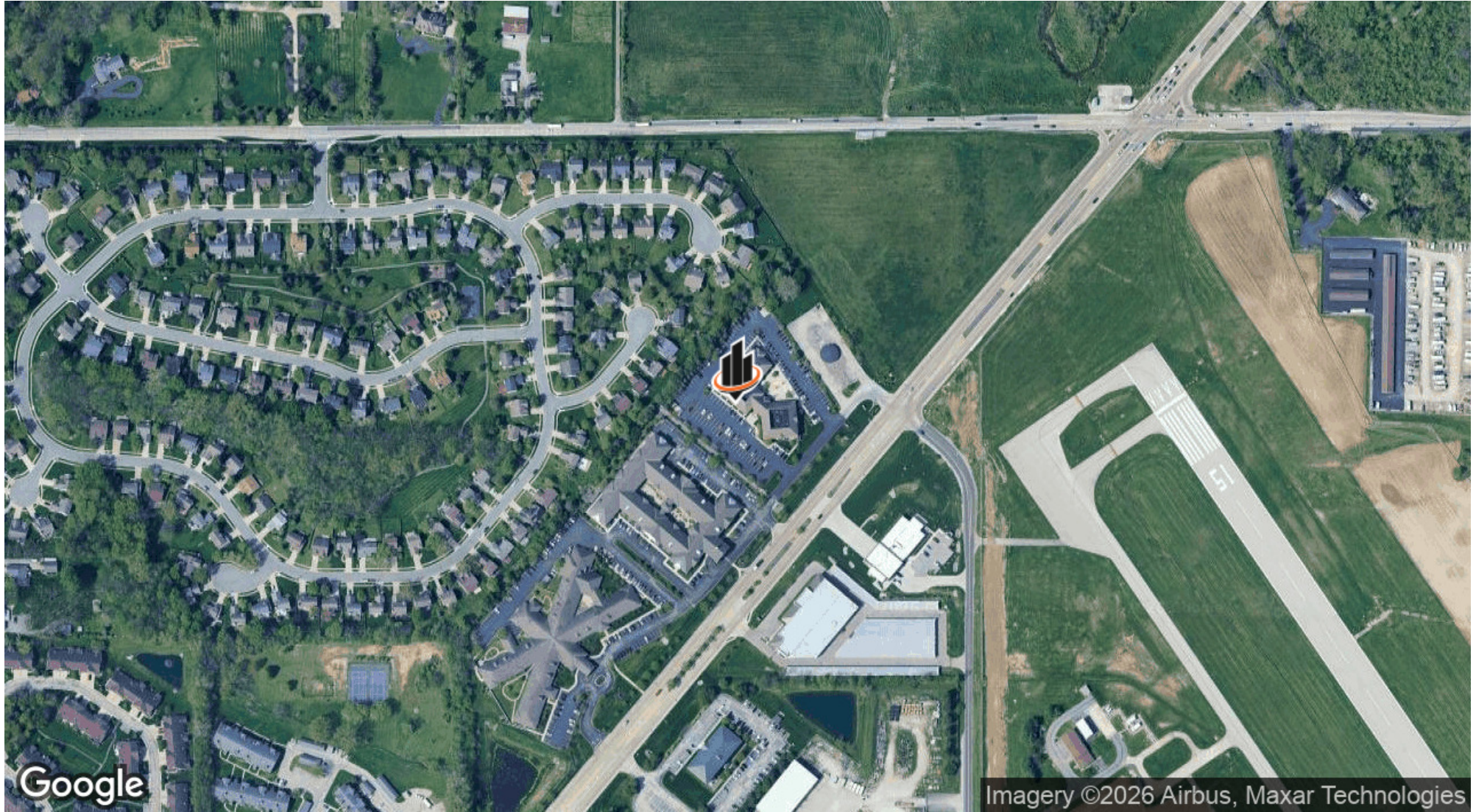
RETAILER MAP



JESS LAWHEAD, SIOR, CCIM, CBI
 O: 317.447.4403
 jess.lawhead@svn.com
 IN #RB14047741

AMBER GARVER
 O: 317.843.8448
 amber.garver@svn.com
 IN #RB25001393

LOCATION MAP



JESS LAWHEAD, SIOR, CCIM, CBI
O: 317.447.4403
jess.lawhead@svn.com
IN #RB14047741

AMBER GARVER
O: 317.843.8448
amber.garver@svn.com
IN #RB25001393