

**For Sale**

**0.4  
ACRES**



**DANIEL MYERS**



**281-339-9888**



**@apexrealtors**



**dmyers@apexrealtors.com**

**APEXREALTORS.COM**

**5444 WESTHEIMER RD. SUITE 1620,  
HOUSTON TX, 77056**

**SIZE**

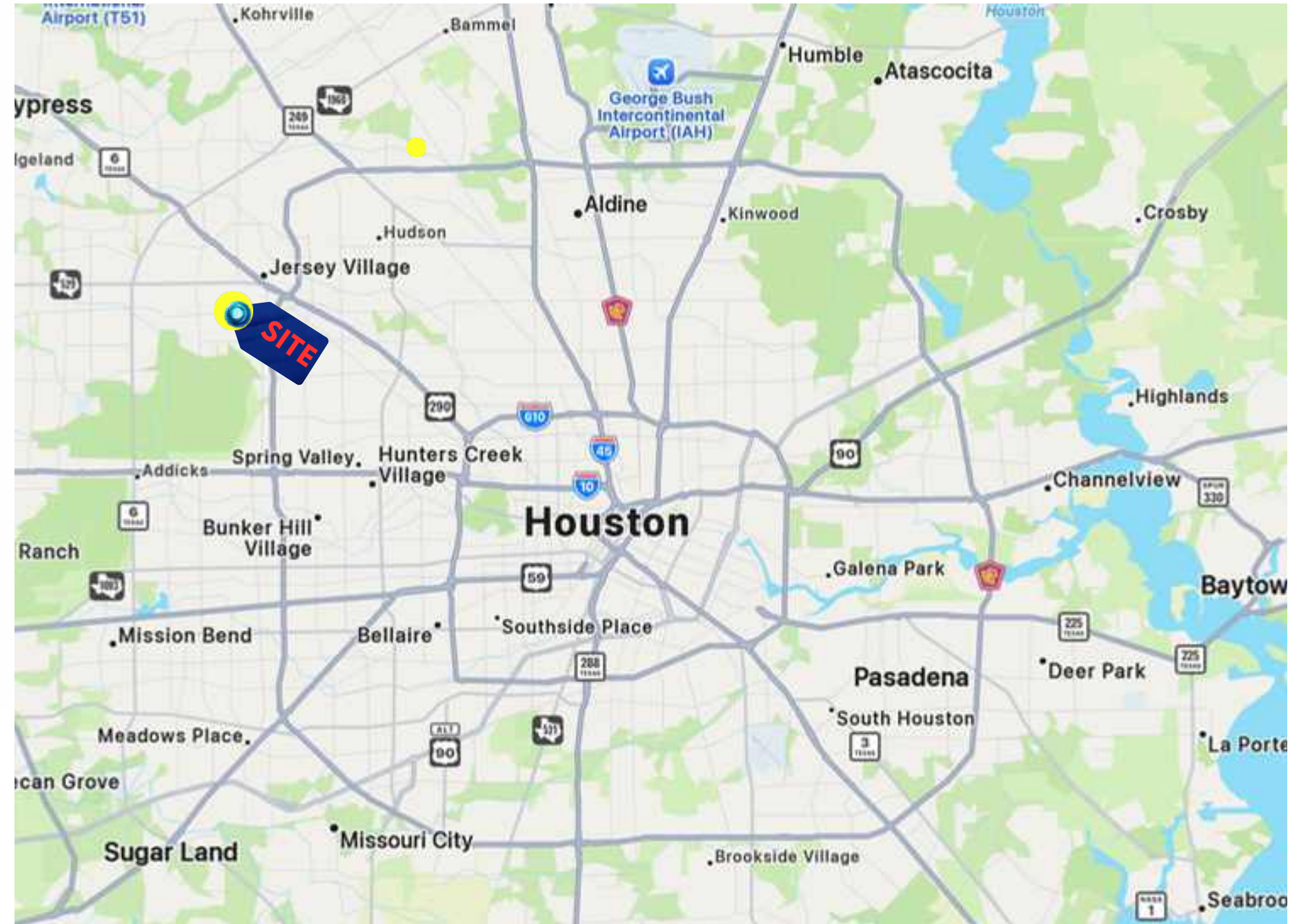
**0.4 acres**

**PRICE**

**Callbroker for pricing**

**HIGHLIGHTS**

- **0.4 Acres on the hard corner of Brittmooore & Holly.**
- **Ex gas station.**
- **Tank has been professionally removed & registered with the State per Seller.**
- **Ready for development.**
- **Potential space for car lot, food truck**
- **Rapidly developing area**
- **Priced for quick sale**





**TRAFFIC COUNTS**

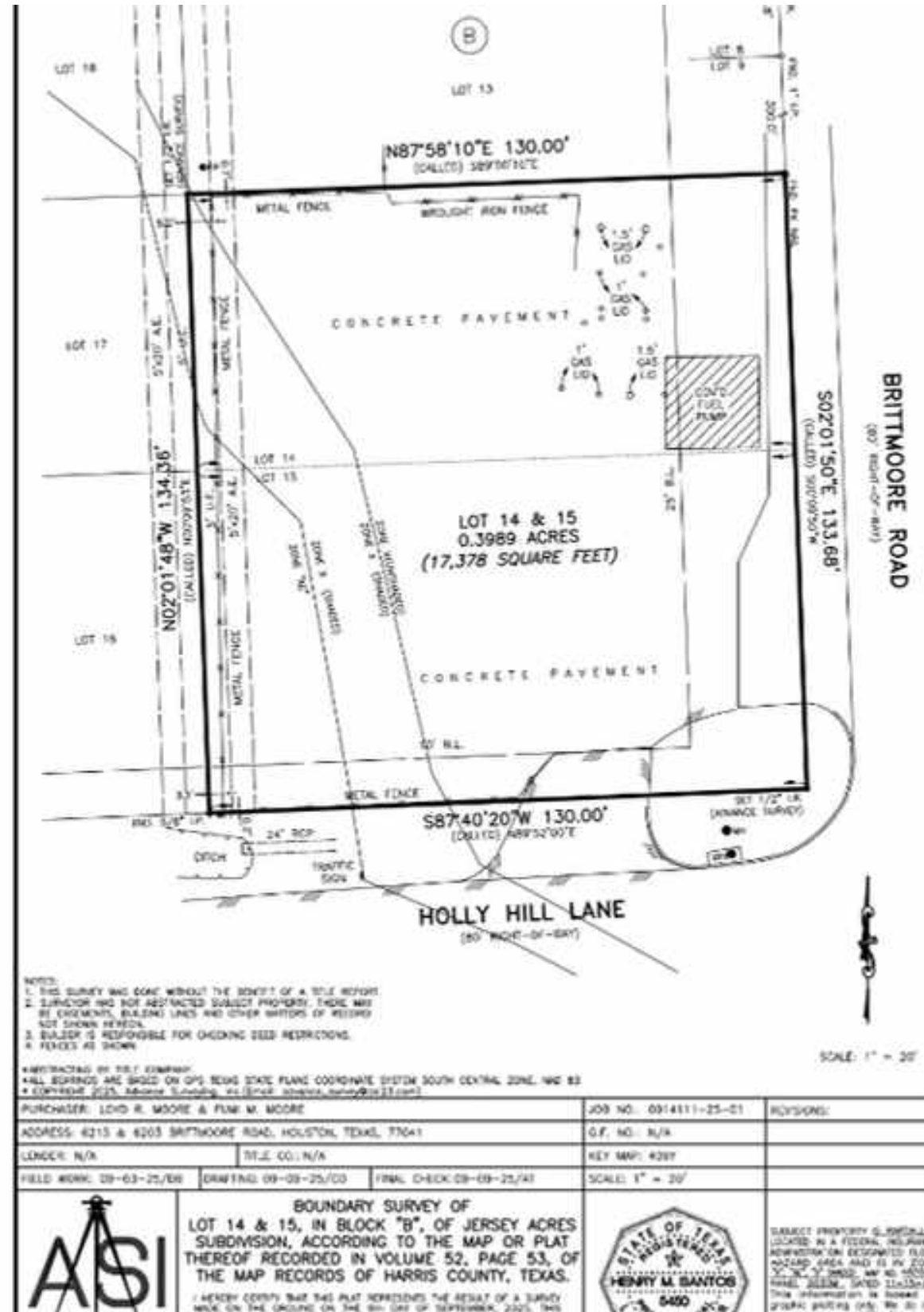
**Brittmoore      13,010 VPD**

**DEMOGRAPHICS**

	<b>1 mile</b>	<b>3 mile</b>
<b>Population</b>	<b>16,762</b>	<b>76,742</b>
<b>Median HH Income</b>	<b>\$77,333</b>	<b>\$86,540</b>
<b>Population Growth '24-'29</b>	<b>↑ 6.3%</b>	<b>↑ 6.3%</b>



## SURVEY



**APEX  
REALTORS**

**6203 & 6215 BRITTMOORE, HOUSTON TX 77041**



**DANIEL MYERS**



**281-339-9888**



**@apexrealtors**



**dmyers@apexrealtors.com**

**APEXREALTORS.COM**

**5444 WESTHEIMER RD. SUITE 1620,  
HOUSTON TX, 77056**