

# 16 W Main

IN DOWNTOWN CARMEL- AVAILABLE FOR LEASE

Turnkey Communities (765) 252-2072 [info@turnkeycommunities.com](mailto:info@turnkeycommunities.com)

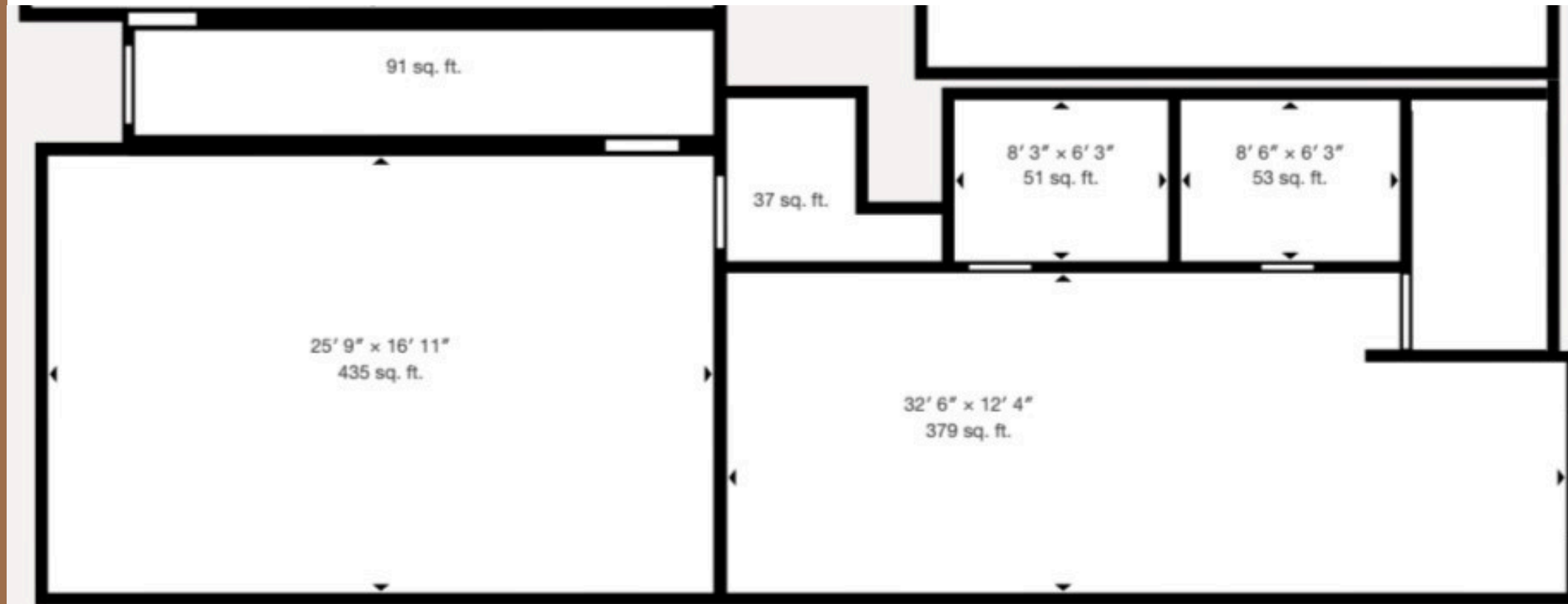
# Photo Gallery



16 W Main Street, Carmel

# PROPERTY OVERVIEW

Location is the standout feature of this leasing opportunity at 16 W Main St in Carmel. Positioned in the heart of the Arts & Design District, this 1913-built, B-2 zoned commercial space offers unmatched walkability. Close proximity to the Monon Trail and key commuter routes delivers both visibility and convenience in one of Central Indiana's most desirable business corridors. Offered at \$35 NNN.



## KEY FEATURES:

- Main Street Location in Carmel Arts and Design District
- Newly Renovated Exterior
- Upper Level
- Open floor plan
- Private Entrance to Suite
- 1,200 Rentable Sq Ft, Zoned B-2

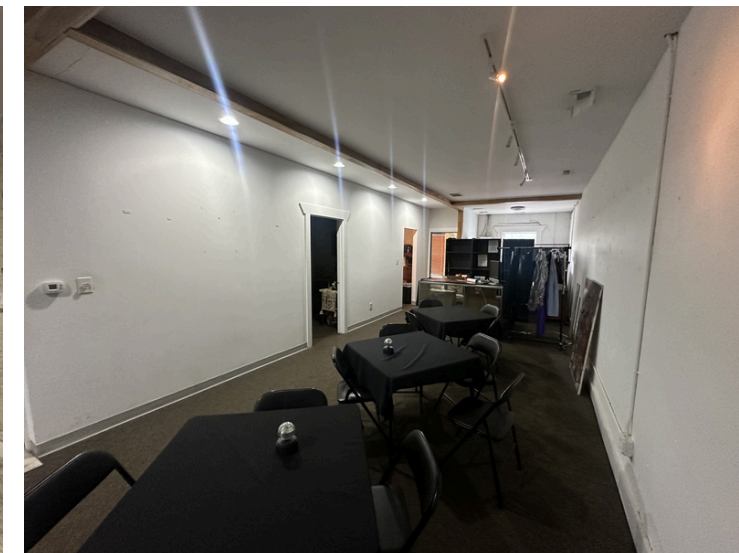


Contact:  
Adam McNeil  
(765) 252-2072  
info@turnkeycommunities.com



## PROPERTY KEY FEATURES

- Main Street Carmel Location
- Renovated Brick Front Building
- Upper Level Office Space
- Private Entrance to Suite from Main St.
- B-2 Zoning for Versatile Commercial Use
- 1,200 RSF



# THE LOCATION

- Surrounded by established local favorites
- High pedestrian traffic from shoppers, diners, and year-round community events
- Strong visibility with charming storefront appeal in a historic downtown setting
- Prime Main Street frontage in the heart of Carmel's vibrant Arts & Design District
- Easy access to US-31 and downtown Indianapolis while maintaining a walkable neighborhood atmosphere

