

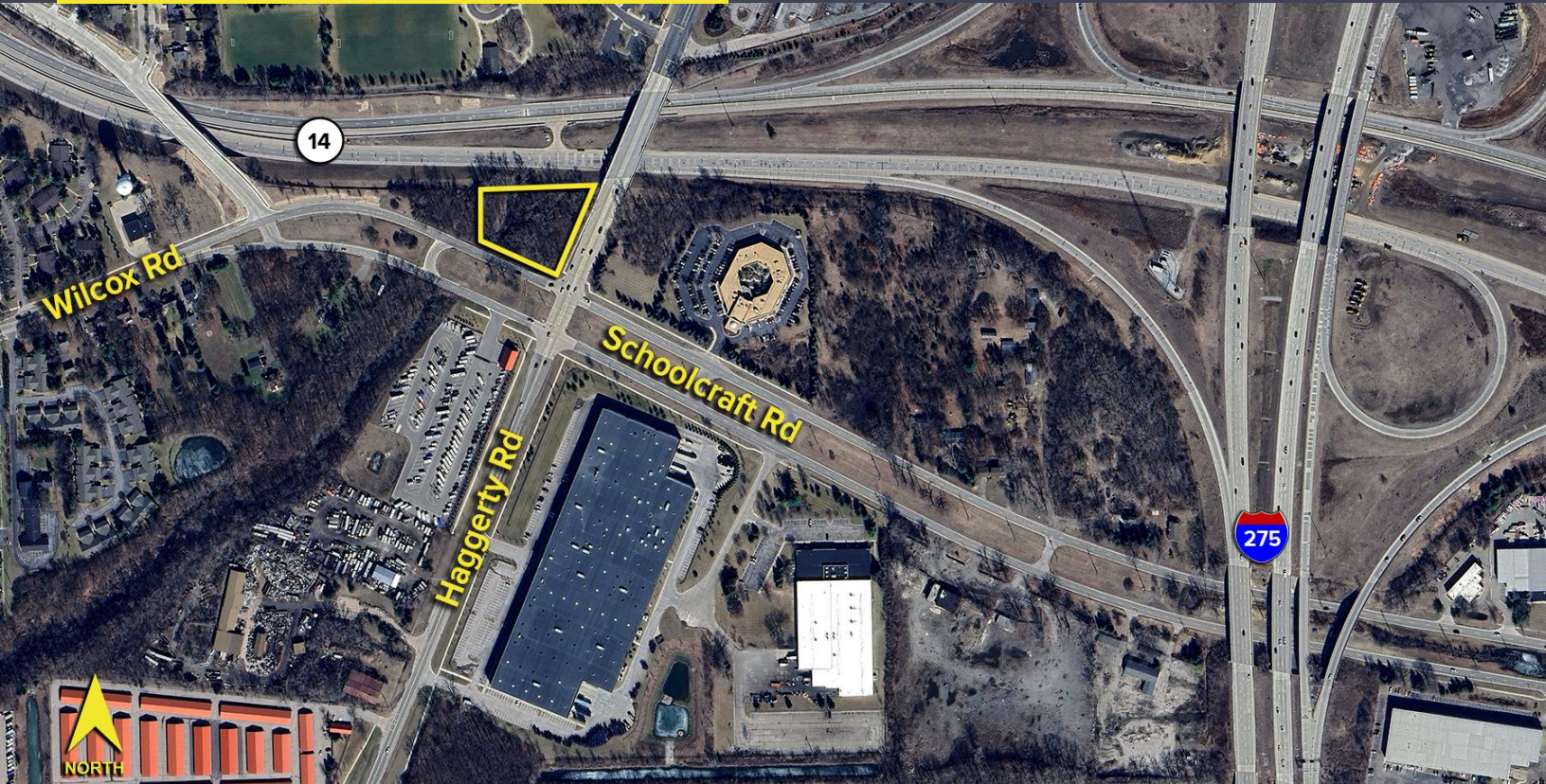
14201 N. HAGGERTY ROAD
PLYMOUTH/TWP., MICHIGAN

LAND FOR SALE
1.43 Acres Available



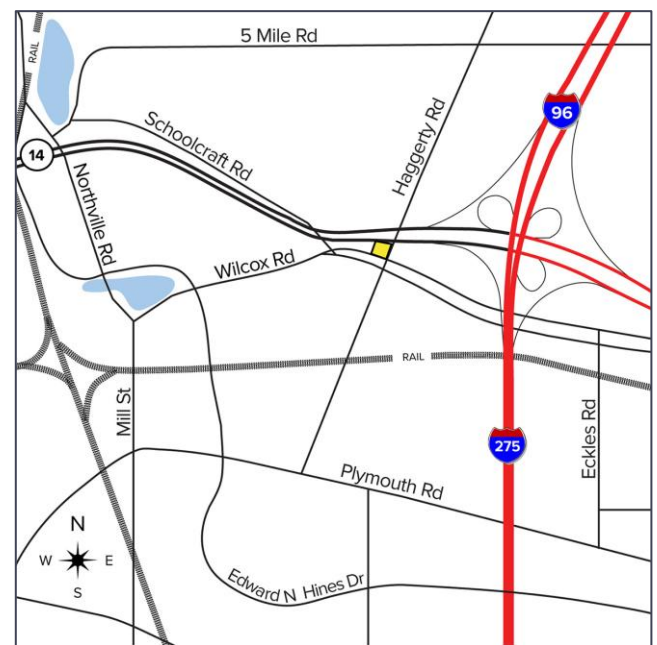
**SIGNATURE
ASSOCIATES**
KNOW SIGNATURE | KNOW RESULTS

PRIME CORNER PROPERTY



PROPERTY FEATURES

- 1.43 acres available
- Zoned Commercial
- Sanitary sewer
- Water
- Storm sewer
- Gas
- Sale Price: ~~\$475,000~~ \$175,000 (\$122,377.62/acre)



For more information, please contact:

DAVE GREEN
(248) 948 4184
dgreen@signatureassociates.com

SIGNATURE ASSOCIATES
One Towne Square, Suite 1200
Southfield, MI 48076
www.signatureassociates.com