

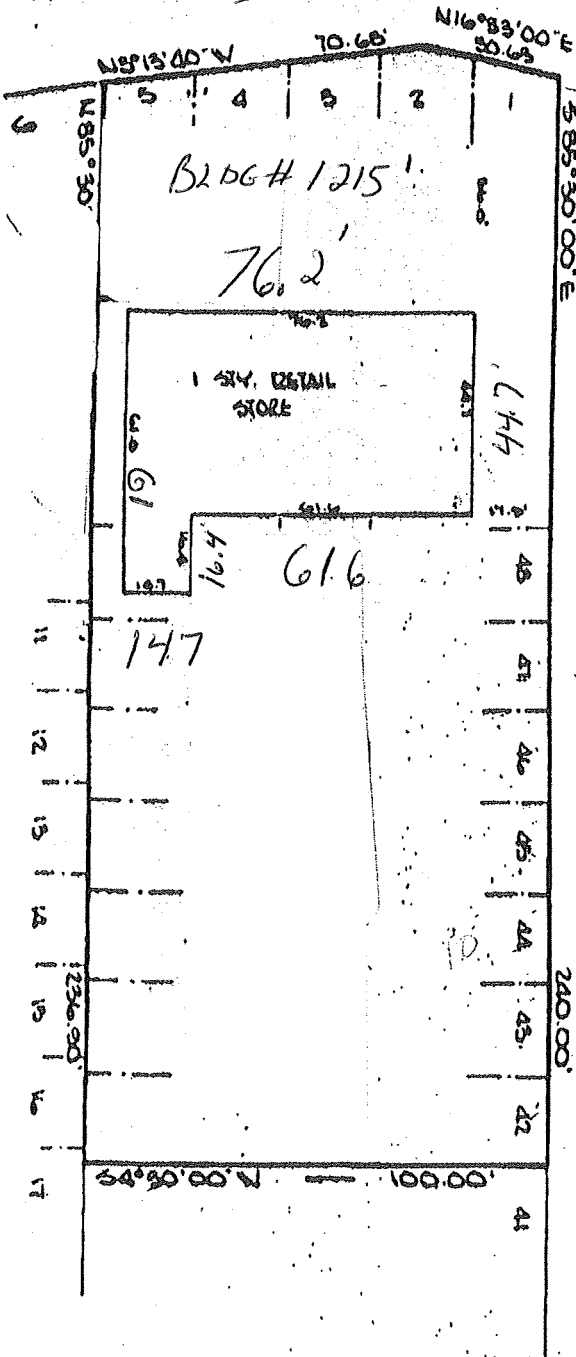
CVS

ASC

N.Y.S. 25A RTE.

TRAFFIC LIGHT  
25A

SAINT JOHN LAND ROAD



ROSE

SIZEEET



Lawrence G. Flynn  
Licensed Broker

**John Flynn**  
REAL ESTATE REALTY CORP.

WWW.FLYNNREALTYKP.COM  
 WWW.KINGSPARKREALTY.COM  
 8 MAIN STREET  
 KINGS PARK, NEW YORK 11754  
 Call: 631-269-6676  
 631-269-1000 • Fax: 631-269-1108  
 lgflynn@optonline.com **NET**



LOTS 1-5 & LOTS 42-48  
 BLOCK 16  
**MAP OF RAPALLO PARK**  
 FILE # 117  
 SITUATE  
 TOWN OF SMITHTOWN  
 SUFFOLK COUNTY, NEW YORK  
 JAN. 6, 1877  
 SCALE: 1" = 30'

FRANK H. ATKINSON, L.S.  
 SETAUKEE, N.Y.  
 NEW YORK STATE LIC. No. 52405

John Flynn Realty: (631)269-1000