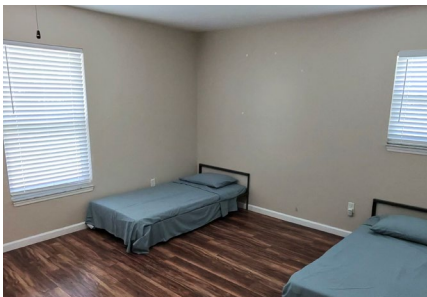




RESIDENTIAL BUILDING FOR SALE

132 E Citrus St, Altamonte Springs, FL 32701

Former Group Home For Sale
in Altamonte Springs



ASKING PRICE:

Call For Pricing



SIZE:

Building: ±2,617 SF
(5 beds / 2.5 baths)

Land: 0.33 Acres



DETAILS:

- Updated concrete driveway with accessible entrance
- **Zoning:** R-1AA - Low Density Residential
- Sprinklers and fire alarm system installed
- **Year built:** 2014



HARBERT
REALTY SERVICES

DAMIEN MADSEN

dmadsen@harbertrealty.com | 407.256.2844

JOSH SMITH, SIOR

jsmith@harbertrealty.com | 407.739.8602

For More Information: HarbertRealty.com

400 S Park Ave, Suite 225, Winter Park, FL 32789

The information contained herein has been obtained from sources deemed reliable, however, HRS makes no guarantees, warranties or representation as to its completeness or accuracy thereof. The presentation of this property is submitted subject to errors, omissions, change of price or conditions, prior to sale or lease or withdrawal without notice.

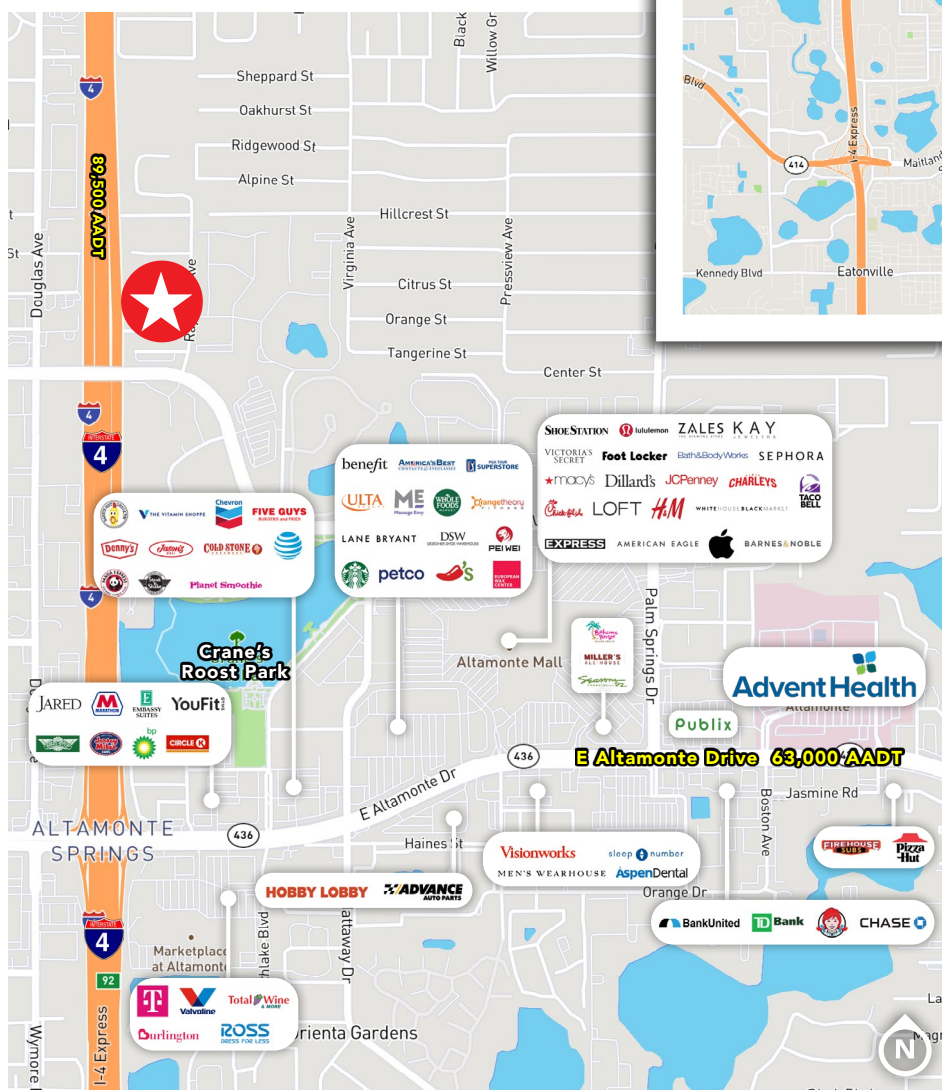
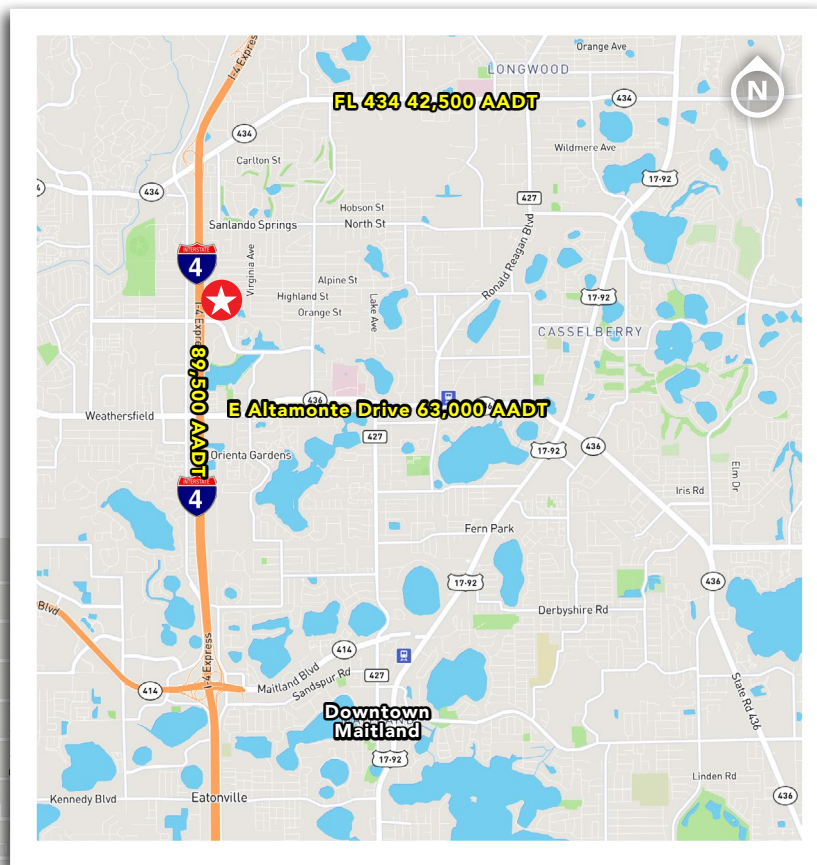
RESIDENTIAL BUILDING FOR SALE

132 E Citrus St, Altamonte Springs, FL 32701

LOCATION

CONVENIENT LOCATION

132 E. Citrus Street offers an exceptional Central Florida location with convenient access to **Interstate 4, State Road 436 (Semoran Boulevard), and Ronald Reagan Boulevard**, providing efficient connectivity throughout the Orlando metropolitan area. Its position in the **heart of Altamonte Springs** places the property just minutes from Uptown Altamonte, AdventHealth Altamonte Springs, Altamonte Mall, and a wide array of restaurants, retail, and business services, making it an ideal location for both employees and visitors.



POPULATION

1 Mile	3 Miles	5 Miles
14,634	92,484	230,441

EMPLOYEES

1 Mile	3 Miles	5 Miles
15,568	81,366	162,068

AVG HH INCOME

1 Mile	3 Miles	5 Miles
\$98,210	\$117,351	\$127,399



HARBERT
REALTY SERVICES

DAMIEN MADSEN

dmdasen@harbertrealty.com | 407.256.2844

JOSH SMITH, SIOR

jsmith@harbertrealty.com | 407.739.8602

For More Information: HarbertRealty.com

400 S Park Ave, Suite 225, Winter Park, FL 32789