

# 6801 N NAVARRO

COMMERCIAL PROPERTY FOR SALE

100+  
LOCATIONS  
OPEN  
24/7

VICTORIA  
SAN ANTONIO  
ARLINGTON  
MISSION  
MCALLEN  
SAN BENITO  
EL PASO  
LA JOTA  
PHARR

6801 A

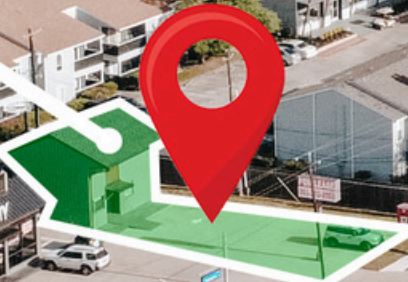




**Victoria Mall**

**6801 N Navarro A**  
**36,550 Daily Traffic Count**

**BRAVO Honda**



*Kelly Dr*

*N Navarro St*

*Huvar St*



**SPACE INFO**

SQFT	DTC
1411	36,000+

# UNIT A

1441 SQFT

Prime commercial property located at the signalized intersection of N Navarro and Kelly Dr in Victoria, Texas. This 1,441 SF building offers exceptional visibility and accessibility in one of the city's busiest retail and commercial corridors. Positioned directly across from Victoria ER and Green Bros. Jewelers and surrounded by major national retailers including Starbucks and Target, the property benefits from strong traffic counts and consistent consumer activity.

The space is move-in ready and suitable for a variety of uses including retail, office, medical, restaurant, or service-oriented businesses. A functioning grease trap is already in place, providing added value for food-service operators. The property also features ample parking and excellent access from Navarro Street.

- Traffic Count: 36,550
- Total Population: 92,678 (25 mi)
- Population Projection 2026: 94,047



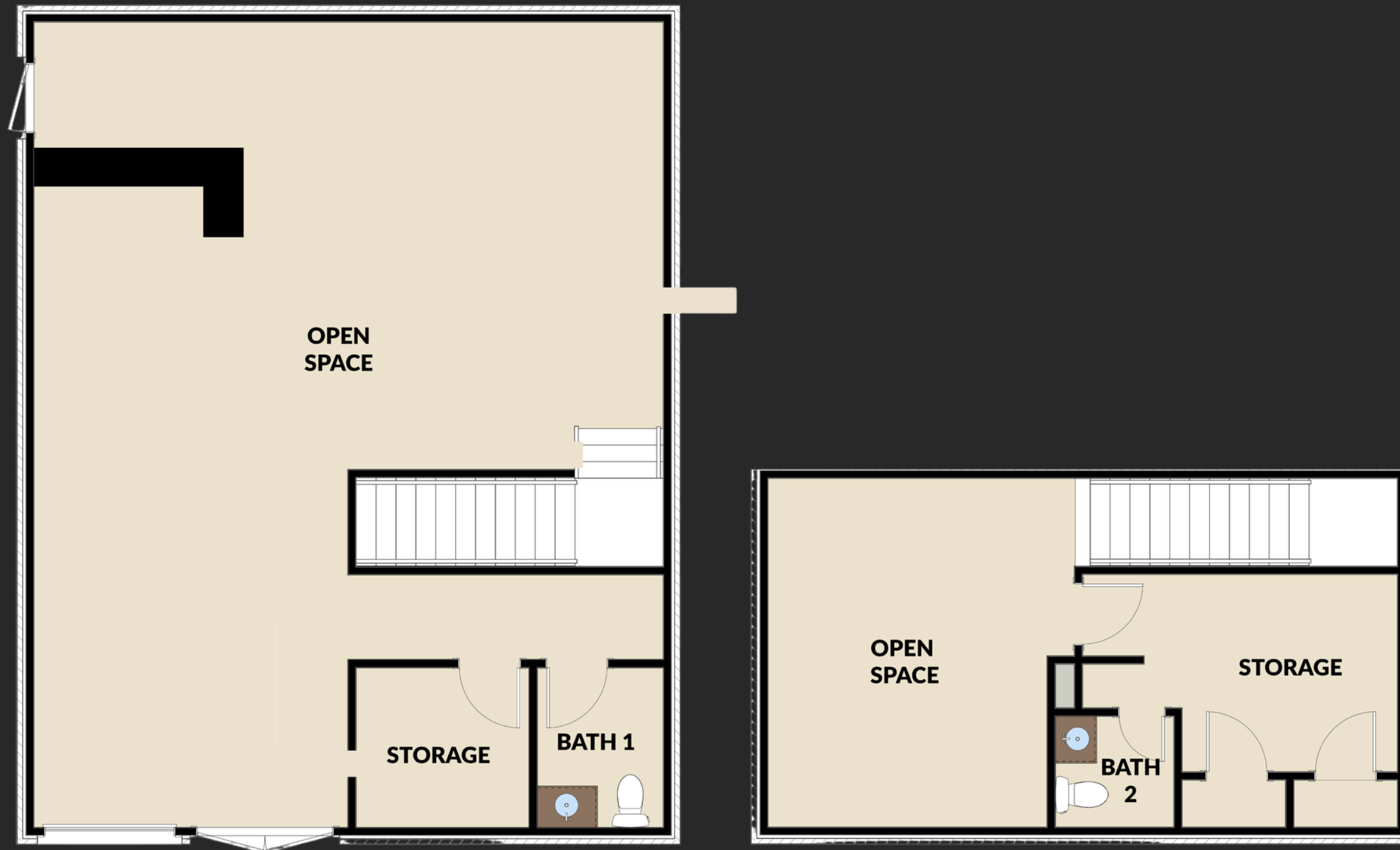
# OPEN FLOORPAN



# UPSTAIRS SPACE



# FLOORPLAN



# CONTACT



**SOUTH  
TEXAS**  
RENTALS.COM

**PHONE**

**(361) 333-2002**

**WEBSITE**

**[www.SouthTexasRentals.com](http://www.SouthTexasRentals.com)**

**EMAIL**

**[leasing@SouthTexasRentals.com](mailto:leasing@SouthTexasRentals.com)**

**ADDRESS**

**4800 N Navarro St, Victoria, TX 77901**