



## Available Suites:

### 1214 Broughton Blvd:

#### Details:

- ⇒ ±1,250 SF
- ⇒ 1 Private Office + Open Floor Space
- ⇒ Reception/Lobby Area, Breakroom, (1) Restroom + Warehouse Space
- ⇒ (1) 10' Drive In Door
- ⇒ Lease Rate: \$1,300/Month NNN

### 1216 Broughton Blvd:

#### Details:

- ⇒ ±1,250 SF
- ⇒ 3 Private Office Spaces
- ⇒ Reception/Lobby Area, Breakroom, (1) Restroom + Warehouse Space
- ⇒ (1) 10' Drive In Door
- ⇒ Lease Rate: \$1,300/Month NNN

## For Lease | Gilbert Business Center Suites

Office/Warehouse Suites | ±1,250 to ±2,500 SF | Subdivisible | Professional Business Park

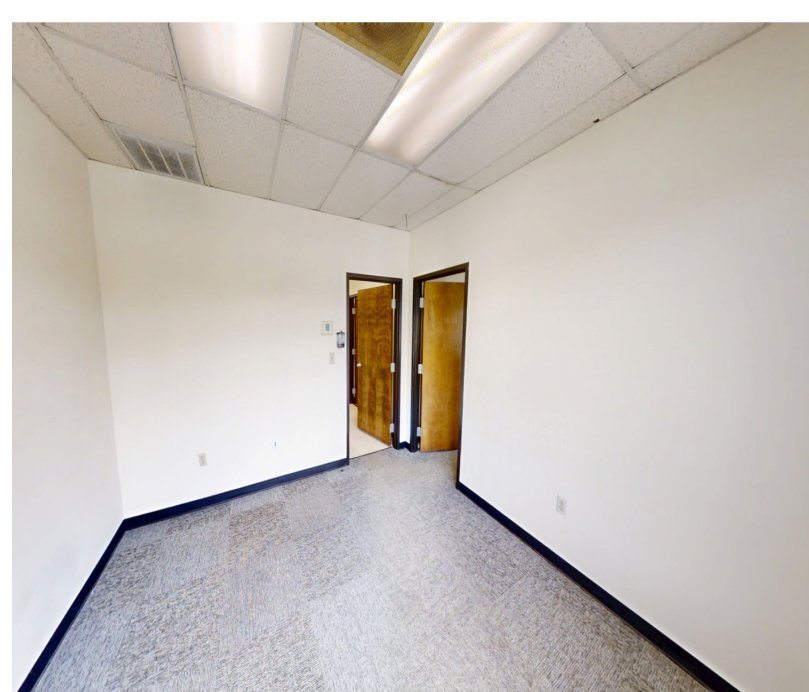
## 1214 & 1216 Broughton | Florence, SC

Located just off North Cashua Drive, this multi-tenant flex building is situated among a mix of regional and national office and light industrial users. Each suite offers a combination of office and warehouse space, providing flexibility for a variety of service-oriented businesses. Suites can be leased individually or combined. The property is conveniently located approximately ±1 mile from I-95 and US Hwy 52, allowing for easy access to major transportation routes. Ample parking is available in both the front lot and at the rear of the building.

135 S Dargan St. Suite 301 | Florence, SC 29506 | Phone (843) 667-4999

[www.palmettocommercial.com](http://www.palmettocommercial.com)





**Take a 3D Tour:**



135 S Dargan St. Suite 301 | Florence, SC 29506 | Phone (843) 667-4999

[www.palmettocommercial.com](http://www.palmettocommercial.com)



No warranty or representation is made as to the accuracy of the information contained herein.

# Area Map



135 S Dargan St. Suite 301 | Florence, SC 29506 | Phone (843) 667-4999

[www.palmettocommercial.com](http://www.palmettocommercial.com)

No warranty or representation is made as to the accuracy of the information contained herein.