

# OFFICES FOR LEASE

Northwest Orlando — Lee Road & John Young Parkway



**Flexible Space!**  
**Flexible Terms!**  
**Move In Ready!**

Ideal for:  
Medical Uses  
Showroom Sales  
Professional Offices

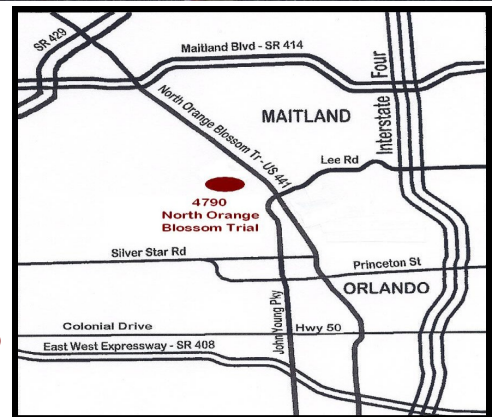
**FOR INFORMATION:**

J. Wallace and Associates, Inc.  
4800 N. Orange Blossom Trail  
Orlando, FL 32810

Phone: 407-291-9292  
Fax: 407-297-9292  
www.jwallaceassociates.com  
Certified General Contractor  
CGC011457

## **FEATURES**

- 3, 240 Square Feet
- 16 Foot Ceilings
- Ground Level Loading
- Close to the Cities of Orlando and Maitland
- Minutes from Major Roadways 414, 429, 408, and Interstate 4

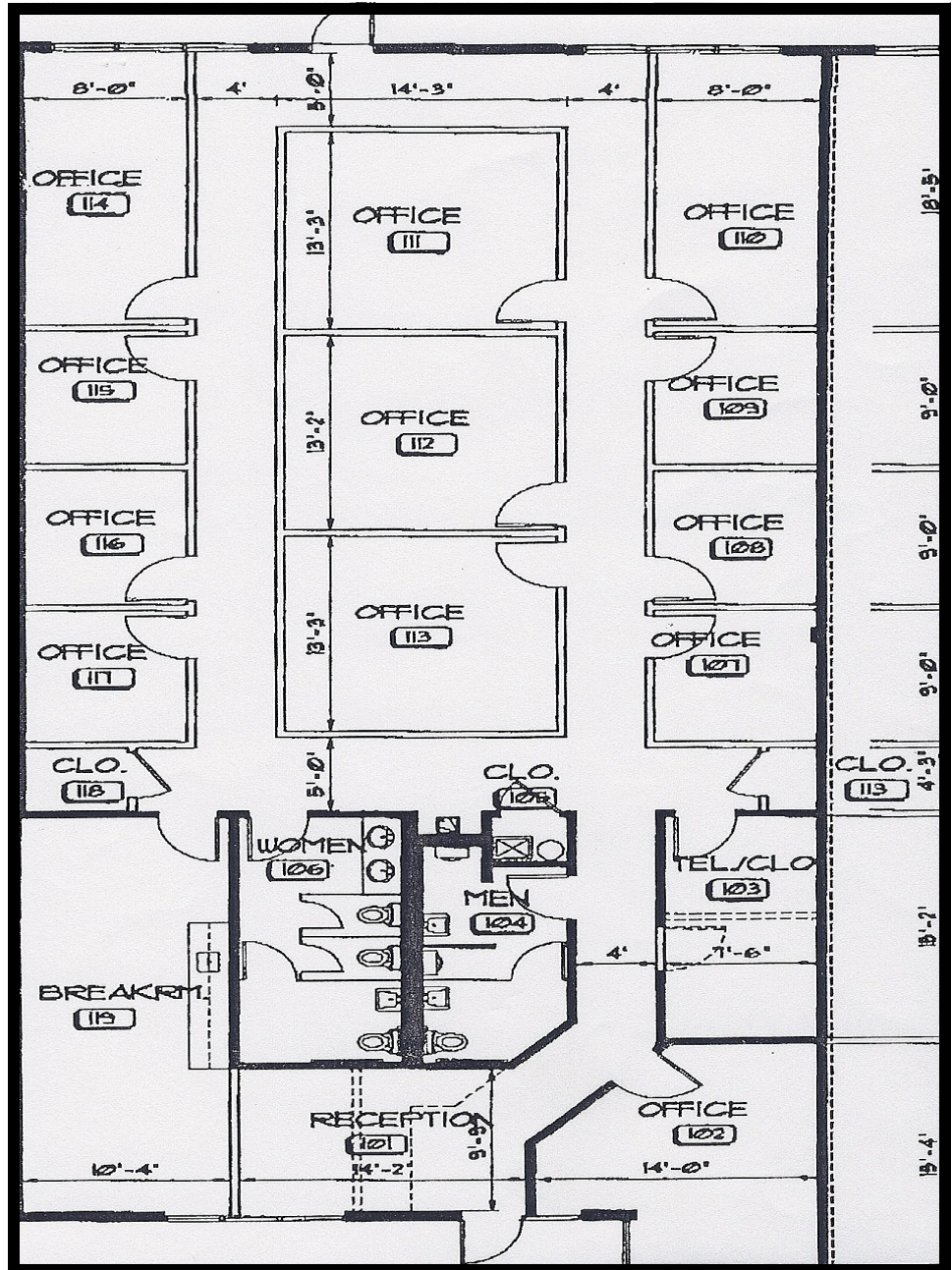


**JWallace**  
**& ASSOCIATES**  
Licensed Real Estate Broker

J. Wallace and Associates, Inc. is a commercial real estate firm and general contractor. Although all information provided regarding for sale, rental or financing is from sources we deem reliable, Such information has not been verified and no express representation is made nor is any to be implied as to the accuracy thereof, and it is submitted subject to errors, omissions, changes of price, rental or other conditions, prior sale, lease or financing, or withdrawal without notice.

For Additional Information On This And  
Other Available Commercial and Industrial  
Properties Please Contact us at:

407-291-9292



Front Entrance

Floor Plan

**JWallace  
& ASSOCIATES**  
Licensed Real Estate Broker

4800 N. Orange Blossom Trail  
Orlando, FL 32810  
Phone: 407-291-9292  
Fax: 407-297-9292  
www.jwallaceassociates.com  
Certified General Contractor  
CGC011457