



APEX PARK

**970,000 SF INDUSTRIAL PARK
OPPORTUNITY**

**62 ACRES OF PRIME IN-FILL SPACE
LOCATED IN ARDEN HILLS, MINNESOTA**

CBRE



**HEMPEL
REAL ESTATE**



62 ACRES OF LAND IN ARDEN HILLS



BUILD-TO-SUIT OPTIONS



PRIME IN-FILL LOCATION



CLOSE PROXIMITY TO RICE CREEK AMENITIES



IMMEDIATE ACCESS TO I-35W



DELIVERY 2027



5-BUILDING MASTER PLAN TOTALING 970,000 SF OF INDUSTRIAL SPACE AVAILABLE

PROPERTY HIGHLIGHTS

Blaine

Lino Lakes

35W



APEX PARK

694

Roseville

Maple

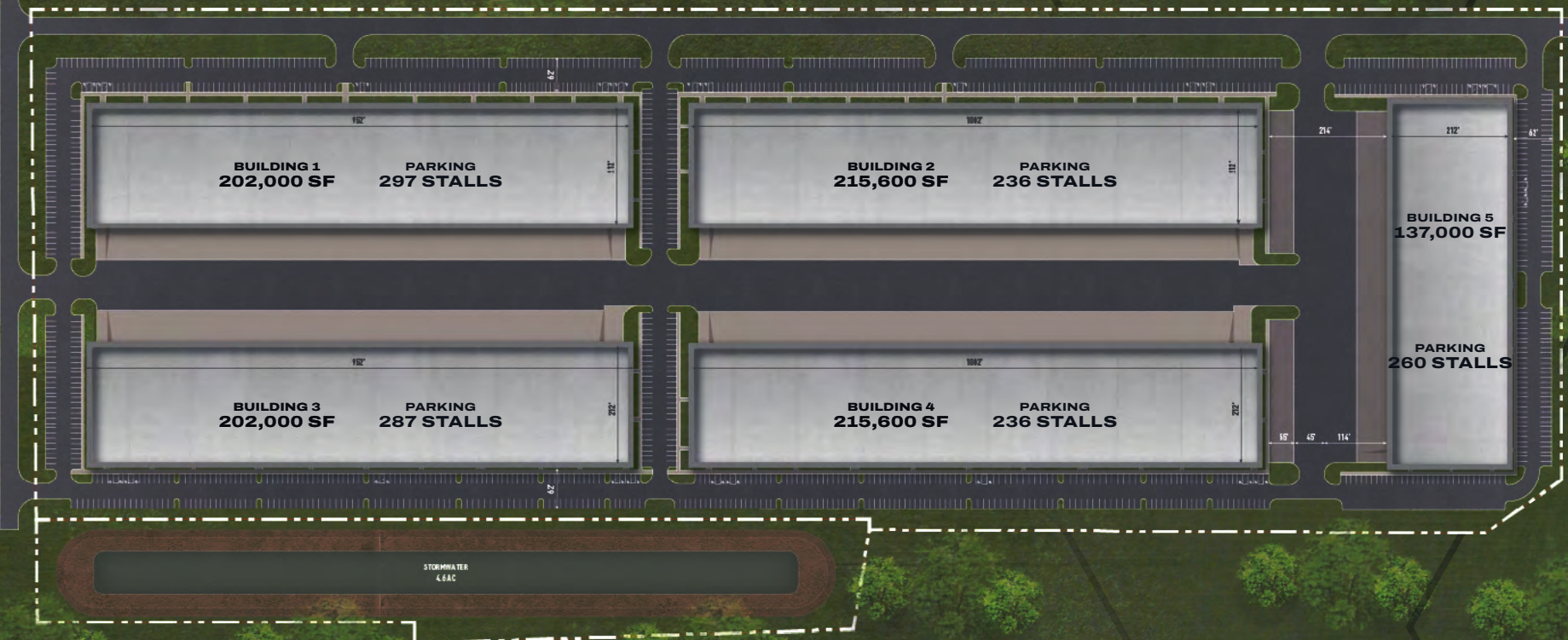
MINNEAPOLIS

SAINT PAUL

Edina

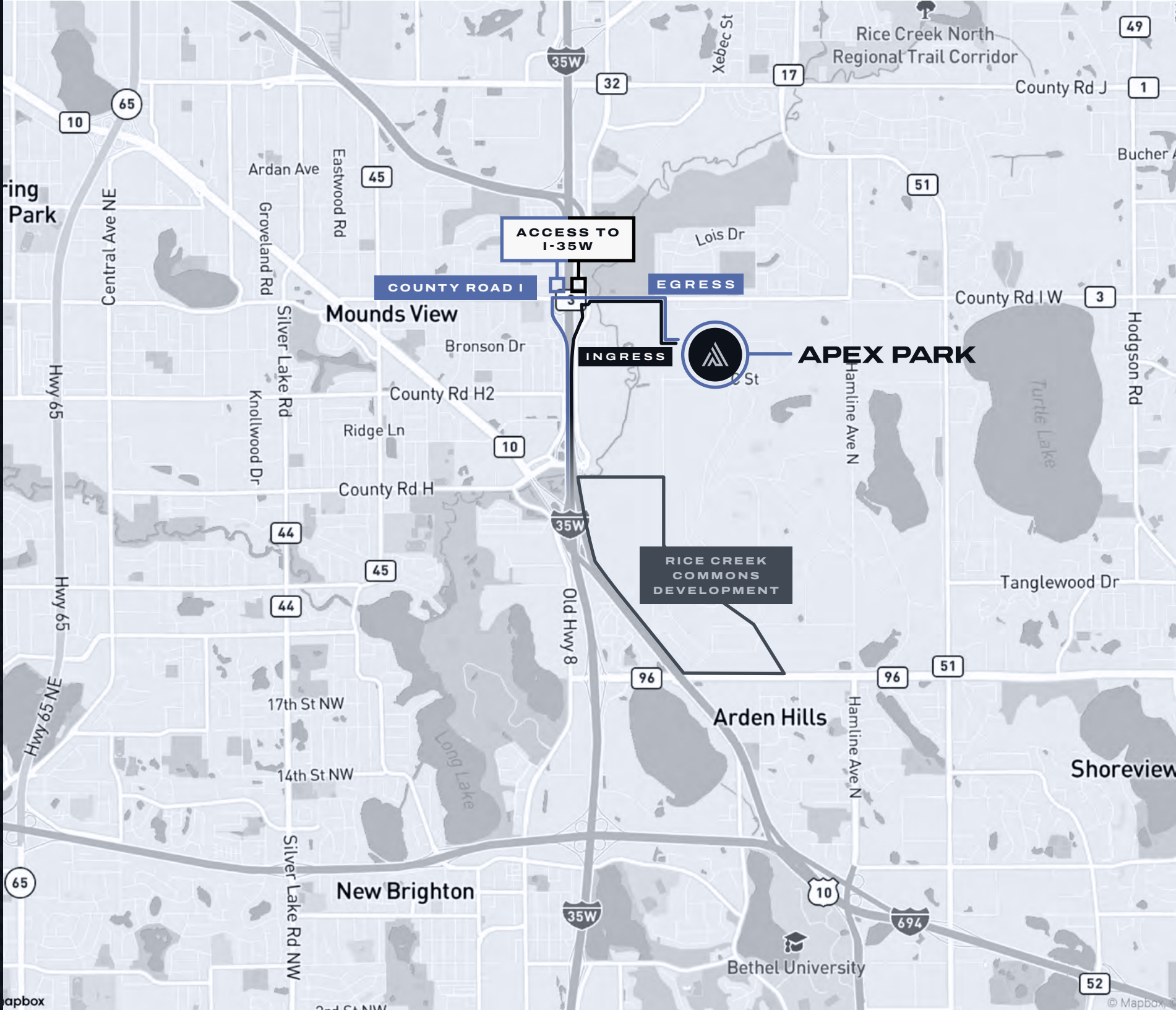
Richfield

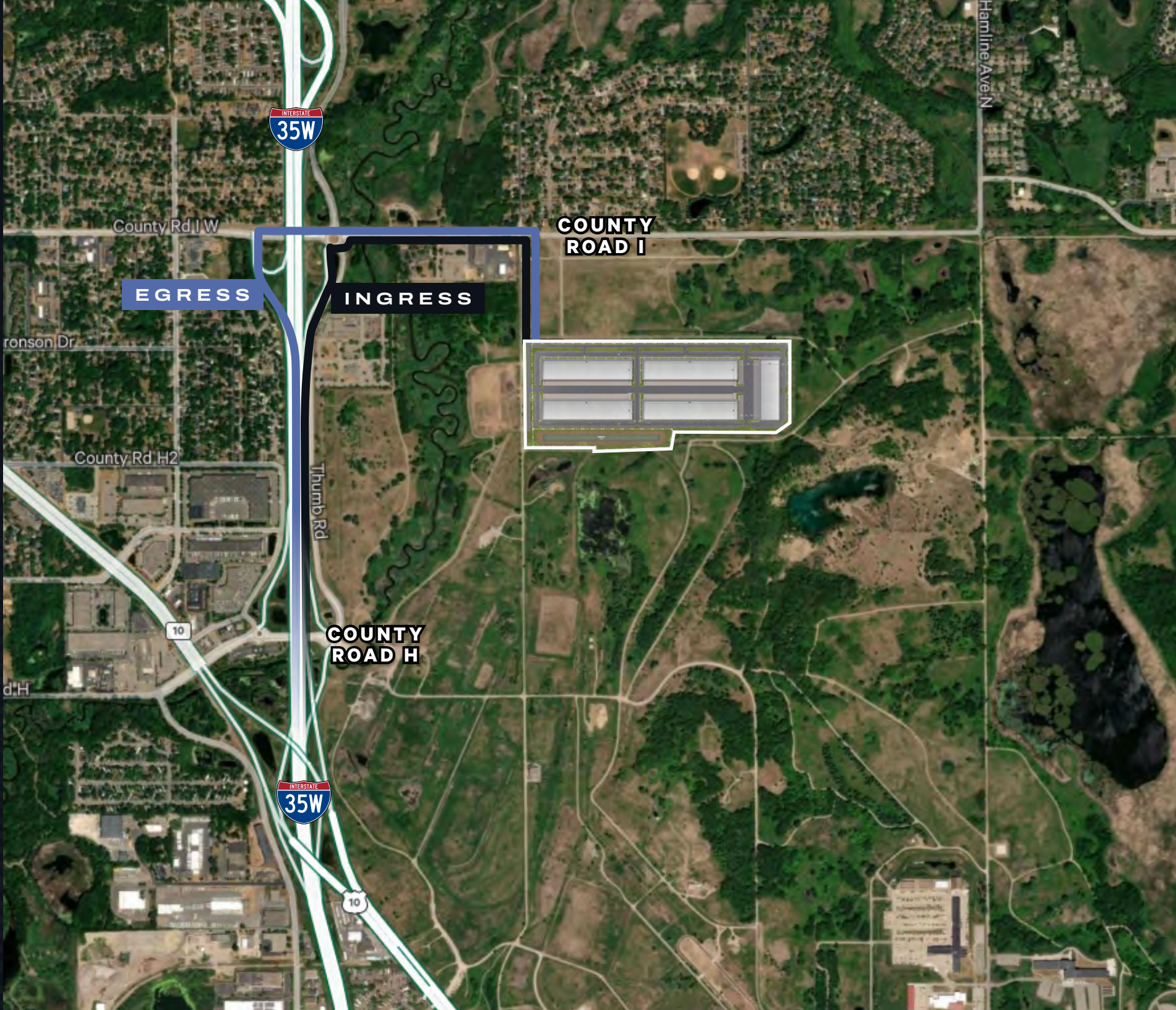
MSP



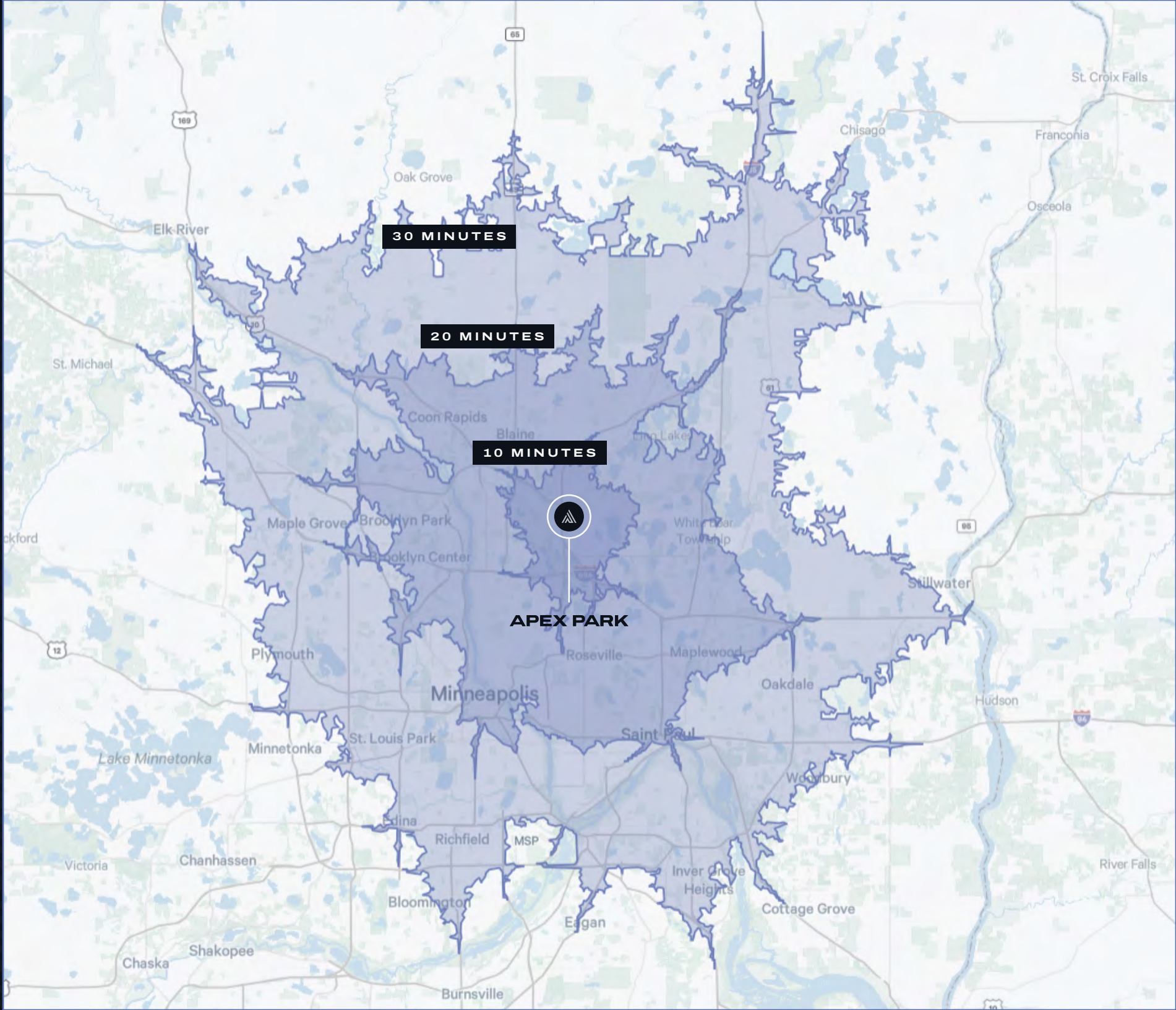
CONCEPTUAL SITE PLAN

ACCESS MAP





DRIVE TIME MAP



AMENITY MAP



Medtronic

APEX PARK

RICE CREEK COMMONS DEVELOPMENT

HyVee
Starbucks
Caribou COFFEE

Caribou COFFEE
ALDI

Walmart
TACO BELL
Wendy's
ALDI
Caribou COFFEE

Country Financial
Wells Fargo
Security

CVS

POPEYES
TACO BELL
bp

AmericInn
McDonald's
MetroTransit

LIFETIME FITNESS

Cub FOODS
DOLLAR TREE

HOMWOOD SUITES by Hilton

HOMWOOD SUITES by Hilton

Holiday Inn

usbank
Hallmark

CD Chuck & Don's
Walgreens
ups
Jockey
BRUEGGERS

LAIFITNESS
CROWBOT JAMES

Boston Scientific

Starbucks
DQ
nēkter

MENARDS

McDonald's

DOLLAR TREE
petco
Target
CROQUETTE

Starbucks
Chick-fil-ē
crumbl COOKIES

Red Robin

Cummins

Cub FOODS
Caribou COFFEE

Huntington
FIVE GUYS
SportClips
TRADER JOE'S
Cane's
Wendy's



**DAN
SWARTZ**

Executive Vice President
+1 952 924 4652
dan.swartz@cbre.com

**AUSTIN
LOVIN**

First Vice President
+1 612 336 4255
austin.lovin@cbre.com

©2026 CBRE, Inc. All rights reserved. This information has been obtained from sources believed reliable, but has not been verified for accuracy or completeness. You should conduct a careful, independent investigation of the property and verify all information. Any reliance on this information is solely at your own risk. CBRE and the CBRE logo are service marks of CBRE, Inc. All other marks displayed on this document are the property of their respective owners, and the use of such logos does not imply any affiliation with or endorsement of CBRE. Photos herein are the property of their respective owners. Use of these images without the express written consent of the owner is prohibited. PMStudio_September2025

CBRE



HEMPEL
REAL ESTATE