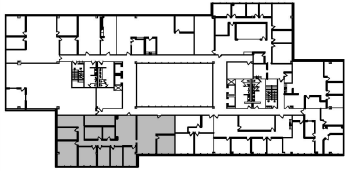
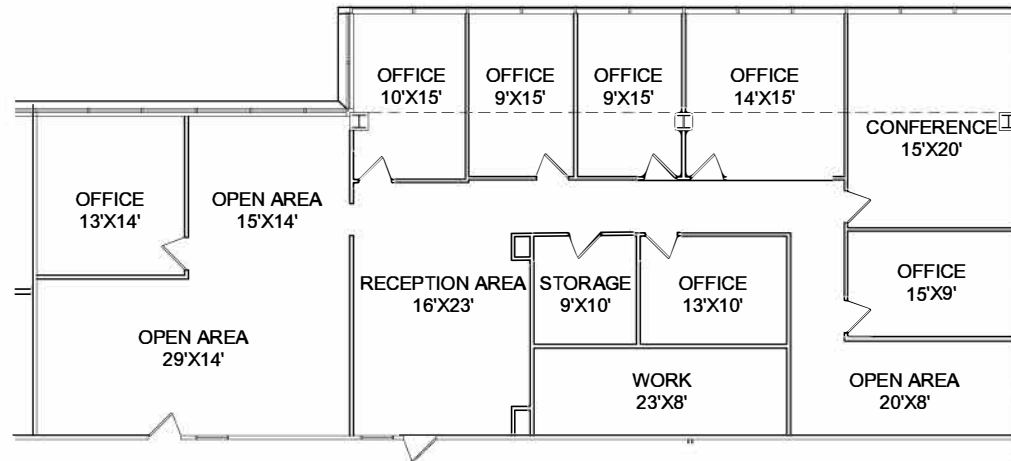


1301 S. BOWEN ROAD - ARLINGTON, TEXAS

SUITE 335C 3,935 RSF



3RD FLOOR



Scale: N.T.S.

All dimensions and square footages are approximate.

Leasing Contact:
KOLBY DICKERSON 214-534-1599 kdickerson@txreproperties.com



1301
BOWEN