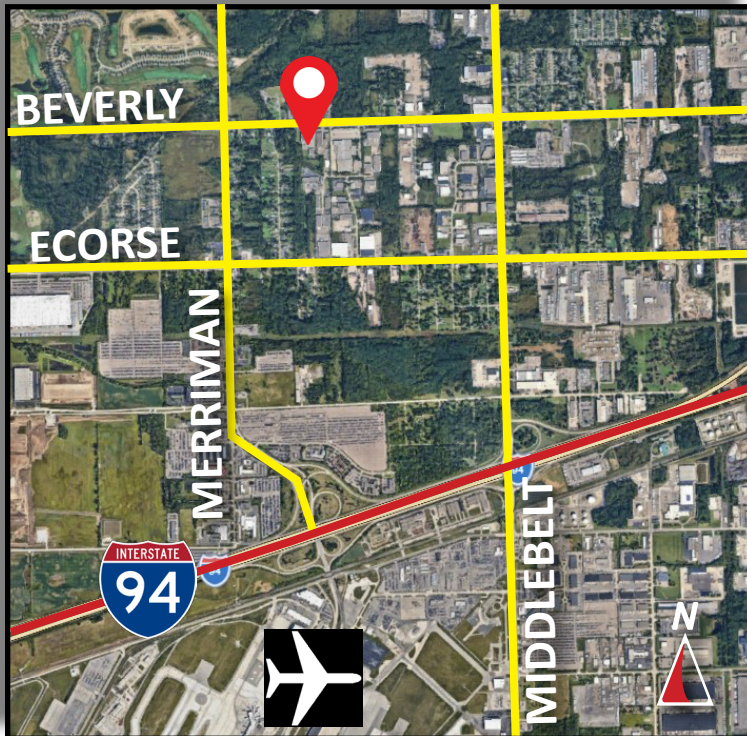


# Burger

& COMPANY

## FOR SALE

30881 Beverly Road  
Romulus, Michigan  
17,300 Square Feet



- 17,300 square feet for sale
- Handsome brick over block building built by D&G Construction
- Located between two I-94 interchanges with quick access to I-275 and DTW
- One (1) truckwell with room to add more
- One (1) 20'x14' extra wide grade level door
- 22' clear height
- Fully sprinklered
- Approximately 2,000 square feet of office space that features a conference room and kitchen
- 2.97 acre lot allows for expansion or potential outdoor storage
- Two year old 24K Generac generator included in the sale
- Sale Price: \$1,695,000

**Burger & Company**

Nicolo Burger, SIOR, CCIM  
Vice President  
Cell: 810.224.8103  
nic@burgercollc.com

Paul Burger, SIOR  
President  
Cell: 586.202.7800  
paul@burgercollc.com

248.536.2888  
www.burgercollc.com  
38345 W. 10 Mile Road, Suite 100  
Farmington Hills, MI 48335

Information contained herein is deemed to be reliable but is not guaranteed and may be withdrawn at any time.

# FOR SALE

30881 Beverly Road  
Romulus, MI



## BUILDING SPECIFICATIONS

<b>Location</b>	Beverly Between Merriman & Middlebelt	<b>Total Building Square Feet</b>	17,300 SF
<b>County</b>	Wayne	<b>Office Square Feet</b>	2,000 SF +/-
<b>Zoning</b>	M-1 Light Industrial	<b>Warehouse Square Feet</b>	15,300 SF
<b>Lot Size</b>	2.97 Acres	<b>Year Built</b>	1998
<b>Construction</b>	Brick Over Block	<b>Roof</b>	Flat
<b>Clear Height</b>	22'	<b>Grade Level Doors</b>	One (1) 20'x14'
<b>Cranes</b>	No	<b>Dock Doors</b>	One (1)
<b>Lighting</b>	Fluorescent	<b>Power</b>	3 Phase / 208V
<b>Heating</b>	Radiant	<b>Sprinklers</b>	Yes
<b>Warehouse A/C</b>	No	<b>Railroad</b>	No
<b>Buss Duct</b>	No	<b>Signage</b>	Yes
<b>Parking</b>	20 Car	<b>Restrooms</b>	Multiple
<b>Freestanding</b>	Yes	<b>Property Taxes</b>	\$23,503.52 (2025)

### Description

- 17,300 square feet for sale
- Handsome brick over block building built by D&G Construction
- Located between two I-94 interchanges with quick access to I-275 and DTW
- One (1) truckwell with room to add more
- One (1) 20'x14' extra wide grade level door
- 22' clear height
- Fully sprinklered
- Approximately 2,000 square feet of office space that features a conference room and kitchen
- 2.97 acre lot allows for expansion or potential outdoor storage
- Two year old 24K Generac generator included in the sale

**Sale Price** \$1,695,000

**Availability** June 1st, 2026

**Burger**

& COMPANY

Nicolo Burger, SIOR, CCIM  
Vice President  
Cell: 810.224.8103  
nic@burgercollc.com

Paul Burger, SIOR  
President  
Cell: 586.202.7800  
paul@burgercollc.com

248.536.2888  
www.burgercollc.com  
38345 W. 10 Mile Road, Suite 100  
Farmington Hills, MI 48335

Information contained herein is deemed to be reliable but is not guaranteed and may be withdrawn at any time.

# FOR SALE

30881 Beverly Road  
Romulus, MI

---

## EXTERIOR IMAGES



**Burger**

& COMPANY

Nicolo Burger, SIOR, CCIM  
Vice President  
Cell: 810.224.8103  
nic@burgercollc.com

Paul Burger, SIOR  
President  
Cell: 586.202.7800  
paul@burgercollc.com

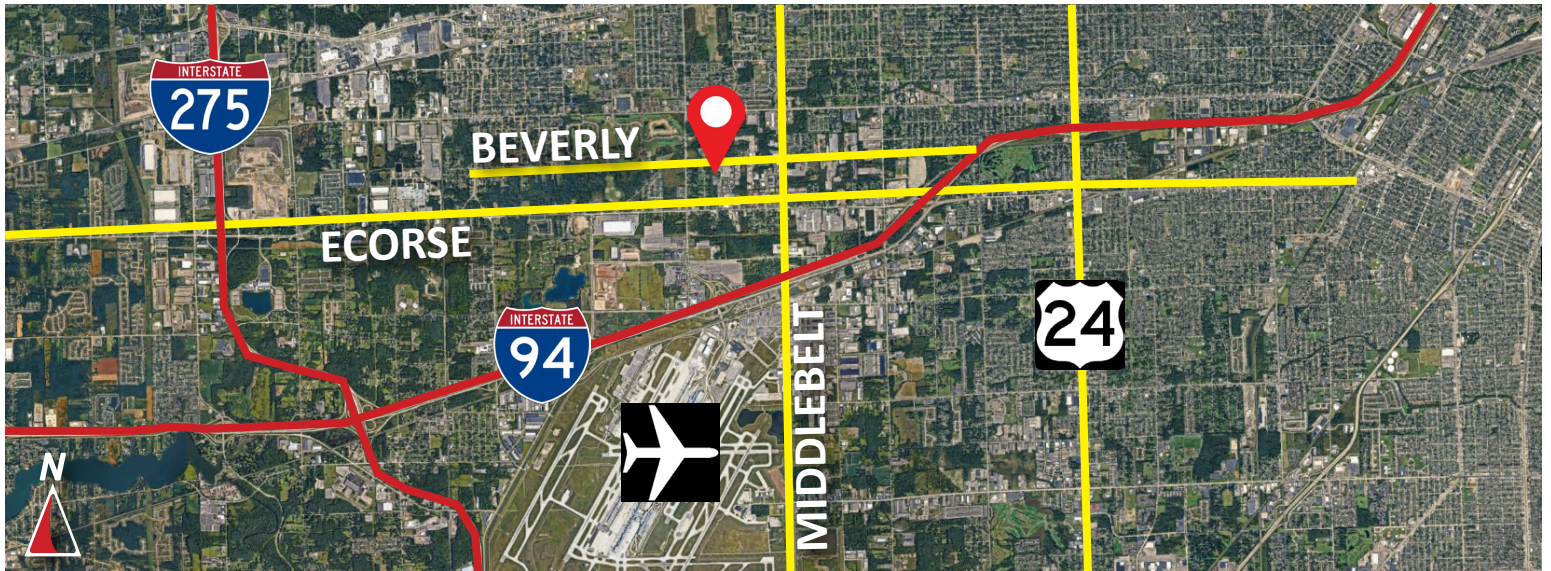
248.536.2888  
www.burgercollc.com  
38345 W. 10 Mile Road, Suite 100  
Farmington Hills, MI 48335

Information contained herein is deemed to be reliable but is not guaranteed and may be withdrawn at any time.

# FOR SALE

30881 Beverly Road  
Romulus, MI

## AERIAL / LOCATION MAP



**Burger**

& COMPANY

Nicolo Burger, SIOR, CCIM  
Vice President  
Cell: 810.224.8103  
nic@burgercollc.com

Paul Burger, SIOR  
President  
Cell: 586.202.7800  
paul@burgercollc.com

248.536.2888  
www.burgercollc.com  
38345 W. 10 Mile Road, Suite 100  
Farmington Hills, MI 48335

Information contained herein is deemed to be reliable but is not guaranteed and may be withdrawn at any time.