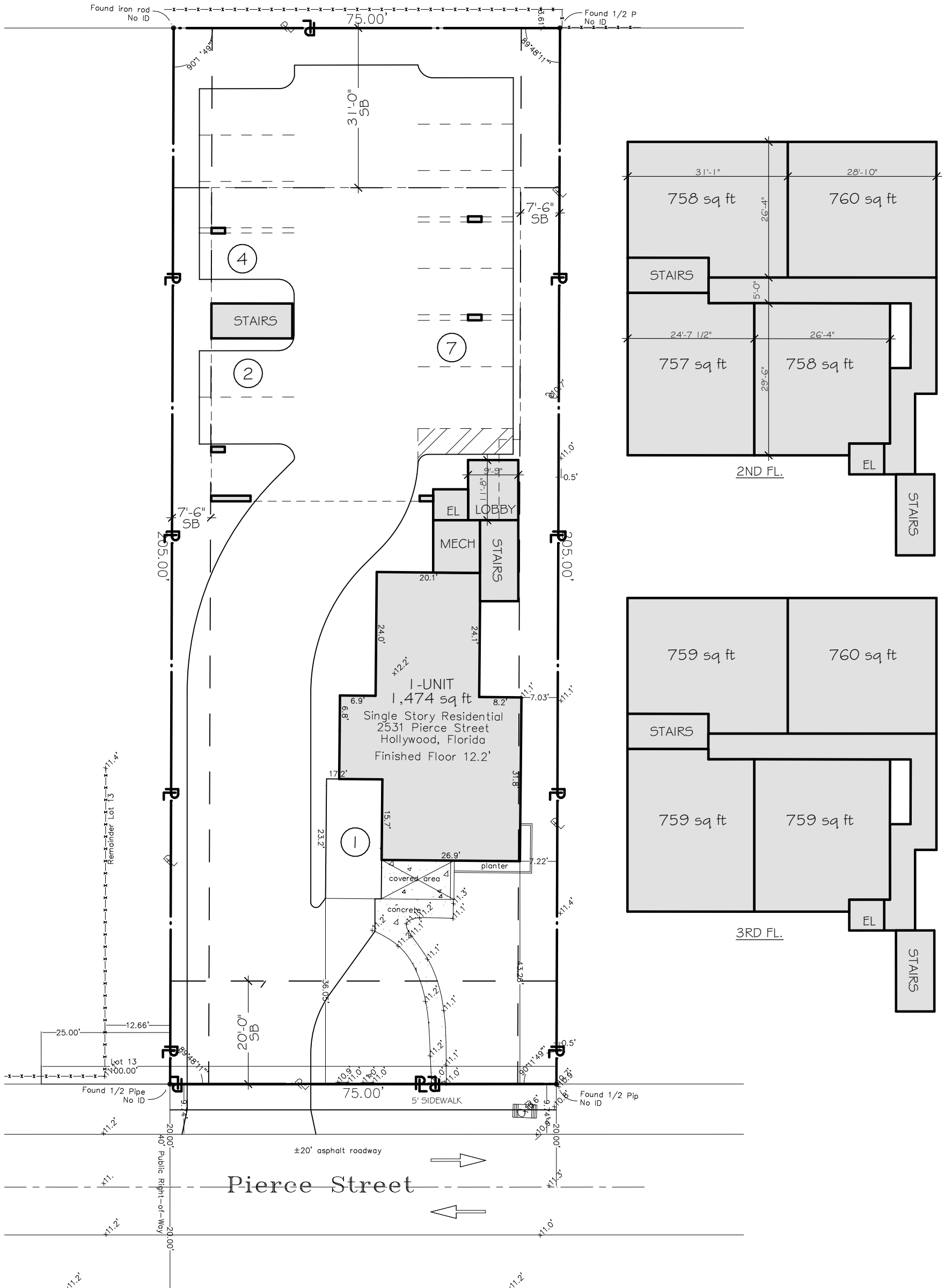


# CODE DATA:

MUNICIPALITY:	CITY OF HOLLYWOOD
ZONING:	RM-18
OCCUPANCY:	RESIDENTIAL, R-2
LOT AREA:	15,393SF (.35 ACRES)
FLOOD ZONE:	X 0.2
CURRENT USE:	SINGLE FAMILY
PROPOSED USE:	MULTI-FAMILY (AFFORDABLE HOUSING)

	REQUIRED	PROPOSED
MAX. LOT COVERAGE	60%	59.8%
DENSITY	16/GROSS ACRE ( 6 UNITS)	9 UNITS (AFFORDABLE HOUSING)
HEIGHT:	45'	34'
MAX STORES	3	3 STORIES
MIN. OPEN SPACE	40%	40.6%
FRONT SETBACK	20'	36'
SIDE SETBACK	7.5'	7.5'
REAR SETBACK	31'	31'



PROPOSED 1ST AND 2ND FL.

SCALE: 1" = 20'