

ALL PROPERTIES ARE OWNER MANAGED AND STRATEGICALLY LOCATED MINUTES FROM A MAJOR INTERSTATE IN THE EAST BAY AND CENTRAL VALLEY.

Right Space. Best Place.

www.cranbrookgroup.com

PORT PLAZA BUSINESS CENTER

[3950 - 3960 Industrial Boulevard, West Sacramento, CA 95691](#)

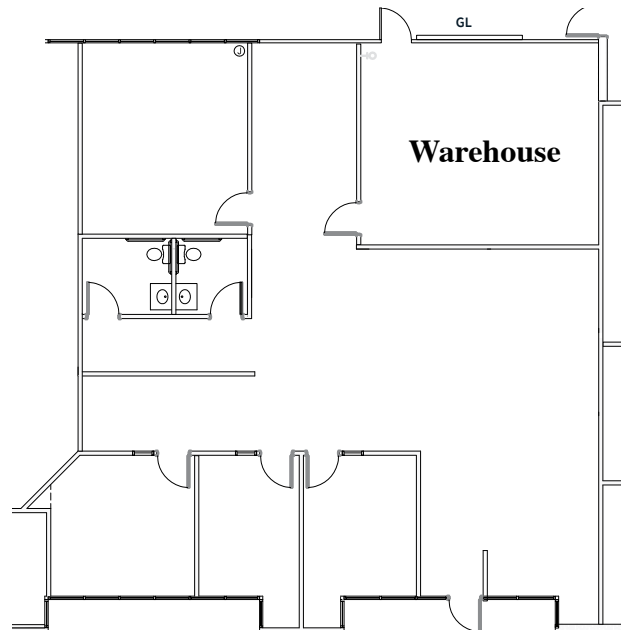


SEE & LEARN MORE ...

Go to cranbrookgroup.com to view more photos and get more information about Port Plaza Business Center and our company!

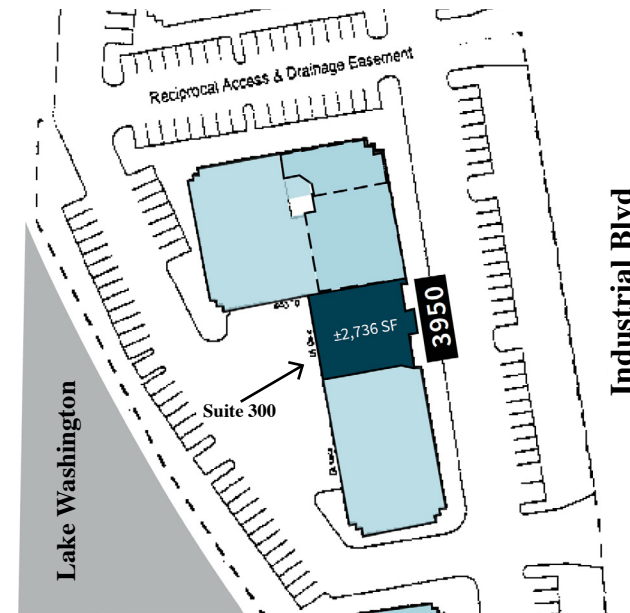
SUITE 3950-300

± 2,736 RENTABLE SQUARE FEET



FLOOR KEY PLAN

AVAILABLE SUITE IN BLUE BELOW



The information contained herein is based on reliable data, measurements and calculations. We have no reason to doubt its accuracy, but we do not guarantee it. All information should be verified prior to purchase or lease.

For more information, please contact:

Mike Luca

Senior Managing Director, JLL

C: (916) 214-0466

mike.luca@jll.com

DRE #01447904

Dominic Smith

Vice President, JLL

C: (916) 995-9396

dominic.smith@jll.com

DRE #02106714

RJ Jimnez

Senior Associate, JLL

C: (916) 440-1837

rj.jimenez@jll.com

DRE # 02248675

Chris Wight

Director of Leasing & Brokerage

O: (209) 549-4960 x 117 | C: (415) 350-1430

cwight@cranbrookgroup.com

DRE #00935049

