



For lease

1,654 SF office space available

4400 Costello Way, Haymarket, VA 20169

 **JLL** SEE A BRIGHTER WAY

Property overview and demographics

Co-tenants and surrounding

- Heathcote Health Center
- Novant Health UVA Health System
- Kaiser Permanente Haymarket Medical Center
- ALDI
- Chick-fil-A
- Sheetz
- Sprouts
- CVS Pharmacy

Location advantages

- Prominent visibility from Washington Street (Route 55)
- Located within one mile of Novant Health Center/Haymarket hospital
- Convenient location in Haymarket commercial area
- Proximity to employment centers in Northern Virginia tech corridor
- Access to retail centers including Virginia Gateway shopping center



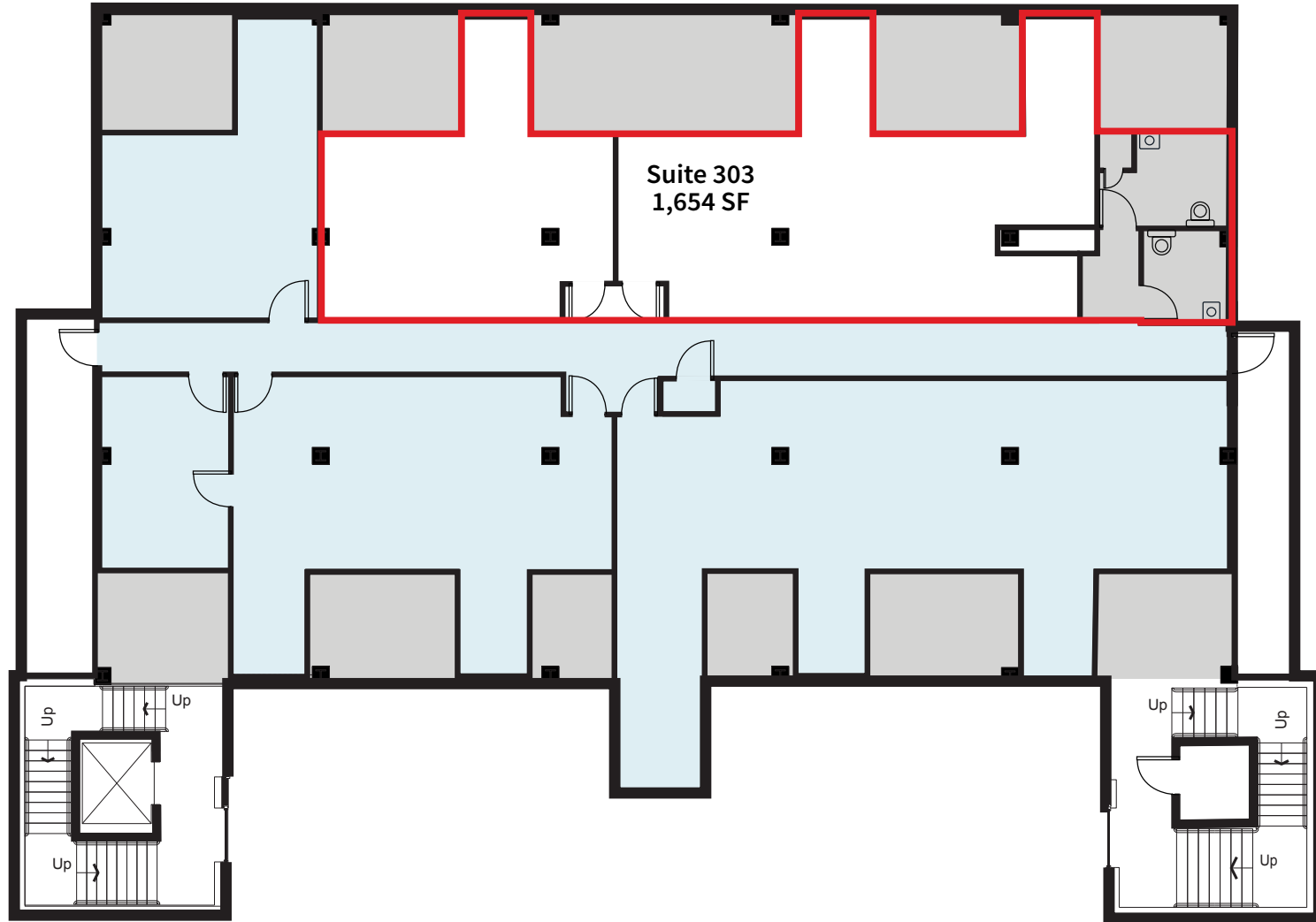
Property specifications

Size	Building total: 19,755 SF
Availability	Suite 303: 1,654 SF available on the 3rd floor
Visibility	Faces Washington Street (Route 55) with good visibility
Parking	Abundant free parking available
Building	Elevator served building

	1 mile	3 miles	5 miles
Population	8,647	50,637	76,261
Households	2,661	17,094	24,679
Average HH income	\$171,128	\$182,787	\$188,951
Daytime population	5,499	47,658	70,013
Traffic count	13,000 AADT (Washington Street)		

Available Leased

Floor plan



Amenity map





Dominic Digiovannantonio
dom.digi@jll.com
+1 443 452 1505

Rob Freedman
rob.freedman@jll.com
+1 410 952 9444

Rachel Cappetta
rachel.cappetta@jll.com
+1 443 451 2607

Although information has been obtained from sources deemed reliable, JLL does not make any guarantees, warranties or representations, express or implied, as to the completeness or accuracy as to the information contained herein. Any projections, opinions, assumptions or estimates used are for example only. There may be differences between projected and actual results, and those differences may be material. JLL does not accept any liability for any loss or damage suffered by any party resulting from reliance on this information. If the recipient of this information has signed a confidentiality agreement with JLL regarding this matter, this information is subject to the terms of that agreement. ©2025 Jones Lang LaSalle Brokerage, Inc. All rights reserved.