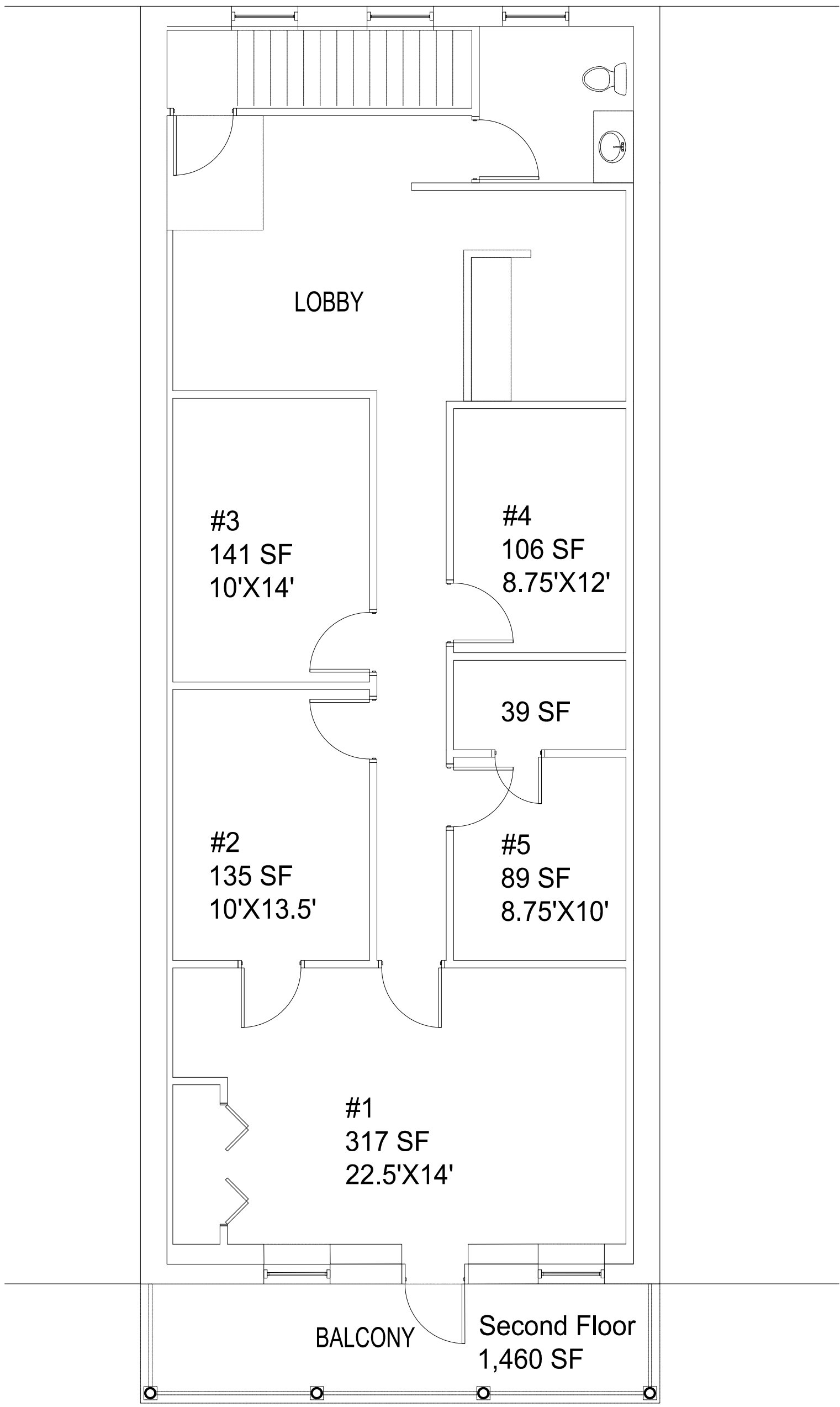


First Floor
1,460 SF

SCALE: 3/16" = 1'-0"



<p><u>Building</u> 915 Commercial St</p> <p>915 Commercial St. Conyers, GA 30012</p>	<p><u>PROJECT NUMBER</u> 202481</p> <p><u>DATE</u> 10/24/2024</p>		<p> R. G. Scott & Associates Architects</p> <p><small>P.O. Box 18056 Atlanta, GA 30316-0056 770.401.5909</small></p>	<p><u>DRAWING</u> First Floor Plan</p> <p>SK 1</p>
--	---	--	---	--



SCALE: 3/16" = 1'-0" 0 2' 4' 10' 16'

<p><u>Building</u> 915 Commercial St</p> <p>915 Commercial St. Conyers, GA 30012</p>	<p><u>PROJECT NUMBER</u> 202481</p> <p><u>DATE</u> 10/24/2024</p>		<p> R. G. Scott & Associates Architects</p> <p><small>P.O. Box 18056 Atlanta, GA 30316-0056 770.401.5909</small></p>	<p><u>DRAWING</u> Second Floor Plan</p> <p>SK 2</p>
--	---	--	---	---