

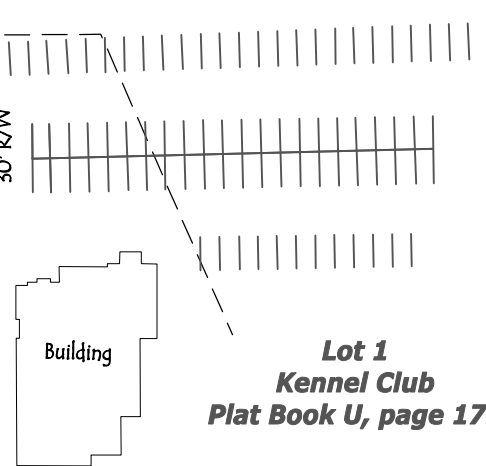
KRATZ

KRATZVILLE ROAD

30' R/W

30' R/W

30' R/W



Lot 1
Kennel Club
Plat Book U, page 173

3.31 Acres

0.15 Acres

Lot 2
Kennel Club
Plat Book U, page 173

6.00 Acres

Existing Bridge

Shaded area is the approximate limits of a Floodway as scaled from FIRM Panel 18163CO114 D, dated 3/17/11

SSMH

35' E.N.S.U. SE

SSMH

100' Easement for R/W in favor of S.I.G.&E.Co., recorded in Deed Book 300, page 49

25' Exclusive Easement for Cathodic Protection System in favor of S.I.G.&E.Co. in Deed Drawer 6, card 4921

Sufficient Width Easement for Pipe Line R/W in favor of S.I.G.&E.Co., recorded in Deed Book 357, page 566

30' Easement for Pipe Line R/W in favor of S.I.G.&E.Co., Deed Book 560, page 191

100' Easement for R/W in favor of S.I.G.&E.Co., recorded in Deed Book 300, page 49

Sufficient Width Easement for Pole & wire line in favor of S.I.G.&E.Co., recorded in Deed Book 488, page 114

Gravel Drive

Water Utility Easement in favor of the City of Evansville

20' P.U.E.

20' P.U.E.

20' P.U.E.

Suffi
Line
reco