

THE MERIDIAN AT BRENTWOOD

8300 EAGER ROAD
\$28.50 PER RSF, FULL SERVICE



Located in a premier mixed-use development located in one of St. Louis' most desired markets.



Free 5/1000 Parking in multi-story parking garage with covered, connecting walkways to the buildings



Class A office with unmatched visibility, amenities and unbeatable access



+/- 104,000 SF Available for Lease



Executive conferencing and auditorium facilities available



Large, efficient floor plates (approx. 26,000 SF)



Dedicated MetroLink Stop on site



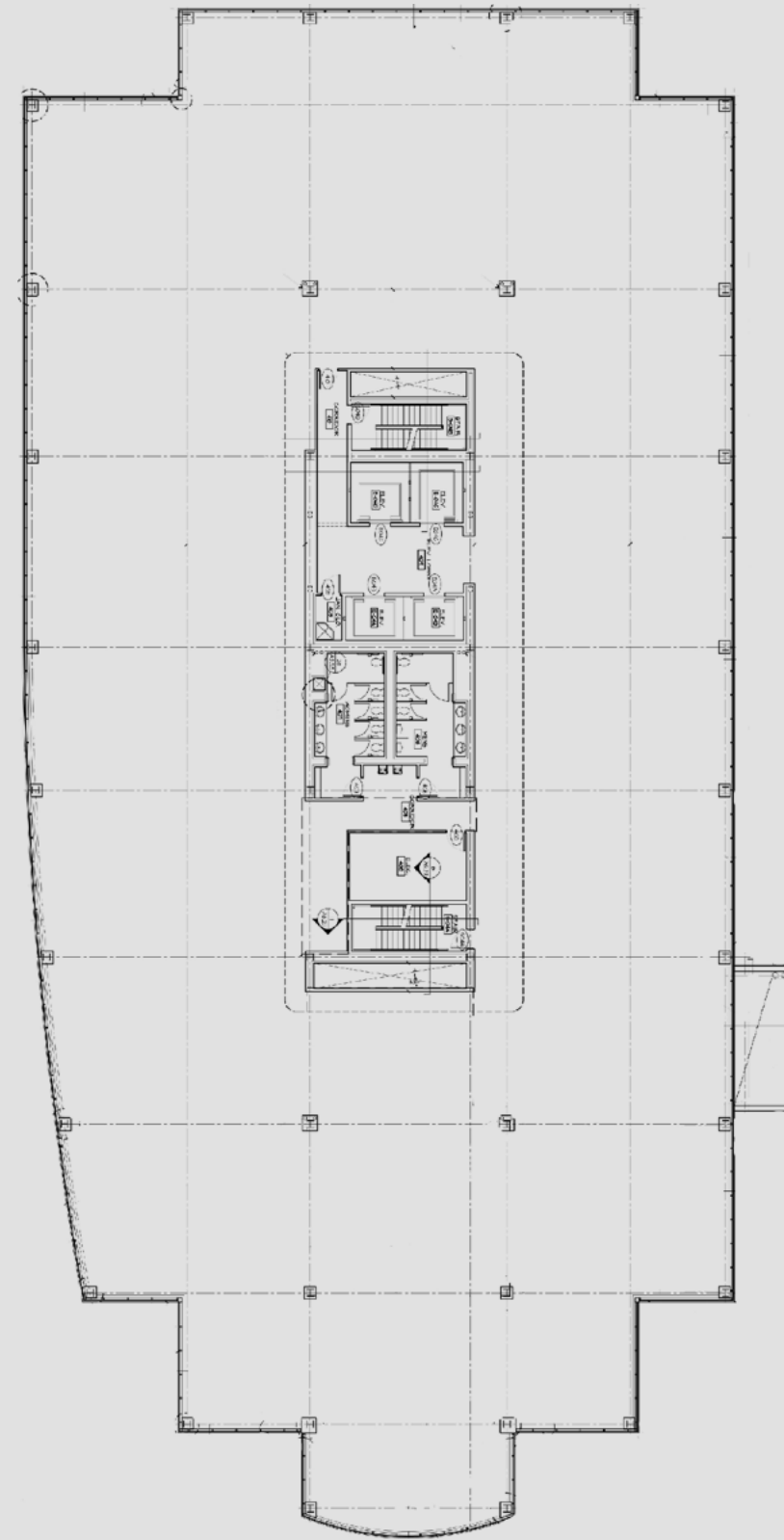
Existing internal stairwells



Building signage available

7TH FLOOR	AVAILABLE 6,497SF	OCCUPIED
6TH FLOOR	OCCUPIED	
5TH FLOOR	OCCUPIED	
4TH FLOOR	AVAILABLE 26,473 SF	
3RD FLOOR	AVAILABLE 25,555 SF	
2ND FLOOR	AVAILABLE 24,040 SF	
1ST FLOOR	OCCUPIED	OCCUPIED
LOWER LEVEL	AVAILABLE - CONFERENCING 12,929 SF	

STANDARD FLOOR PLAN



ARTIE KERCKHOFF
CCIM

Senior Vice President
+1 314 655 6016
art.kerckhoff@cbre.com

WHITAKER VARLEY

Senior Vice President
+1 314 655 5930
whitaker.varley@cbre.com

