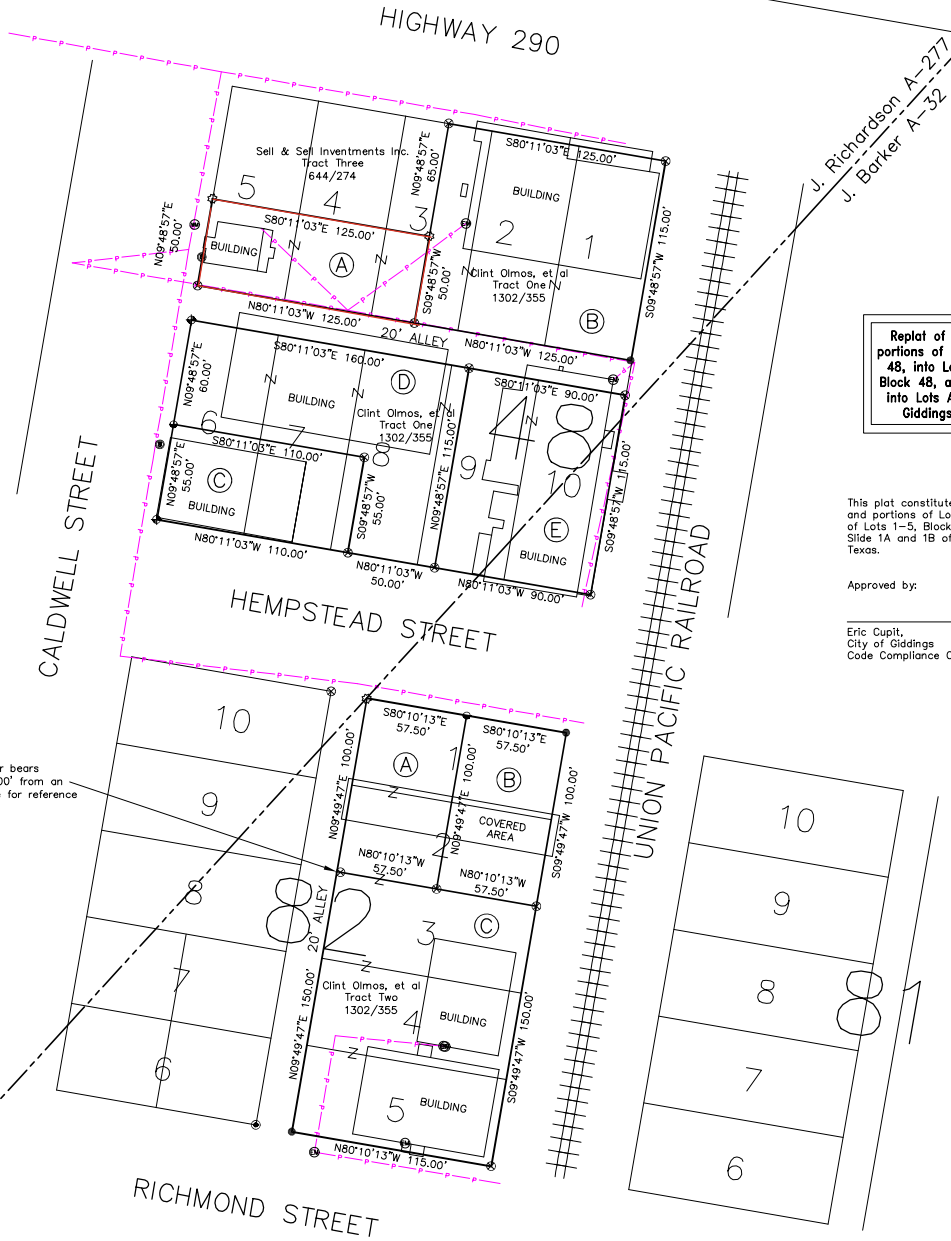


LEE COUNTY, TEXAS



- ⊙ 5/8" rebar with cap marked "5090" set
- 5/8" rebar found
- ⊗ "X" in concrete
- ⊙ cotton spindle found
- ⊙ pk with washer marked "5090" set
- ⊙ pk with washer marked "4428" found
- ⊙ electric meter
- ⊙ water meter
- ⊙ sewer access
- power

Replat of Lots 1, 2, 6-10, and portions of Lots 3, 4, and 5, Block 48, into Lots A, B, C, D, and E, Block 48, and Lots 1-5, Block 82, into Lots A, B, and C, Block 82, Giddings, Lee County, Texas

This plat constitutes a replat of Lots 1, 2, 6-10, and portions of Lots 3, 4, and 5, Block 48, and all of Lots 1-5, Block 82, Giddings, Texas, as per Plat Slide 1A and 1B of the Plat Records of Lee County, Texas.

Approved by:
Eric Cuptl,
City of Giddings
Code Compliance Official

point for corner bears
N80°10'13"W 2.00' from an
"X" in concrete for reference

Survey plat showing Lots A, B, C, D, and E, Block 48, City of Giddings and Lots A, B, and C, Block 82, City of Giddings, being all of Lots 1, 2, 6-10, and portions of Lots 3, 4, and 5, Block 48, and all of Lots 1-5, Block 82, Giddings, Texas, as per Plat Slide 1A and 1B of the Plat Records of Lee County, Texas, being the same as a Tract One and Tract Two described in a deed to Clint Olmos, et al and recorded in volume 1302, page 355 of the Real Property Records of Lee County, Texas.

All being a part of the J. Richardson Survey, Abstract 277, and part of the J. Barker Survey, Abstract 32, Lee County, Texas.

PRELIMINARY

This document shall not be recorded for any purpose.

Survey Notes:
1) Bearings are Grid NAD 83, Texas Coordinate System, Central Zone.
2) No attempt has been made to locate any improvements, easements, or rights of way not shown hereon. Underground utilities may exist that are not shown hereon.
3) Property lines may be subject to meandering fences, the actual details of which are unable to be shown at the scale of this plat.
4) All improvements are not shown.